

## CAPITAL REGIONAL DISTRICT SIGNS DEVELOPED UNDER THE SIGNAGE GUIDELINES

---

Since the CRD Signage Guidelines document was approved in January 2021, the following five public signs have been installed.

### REGIONAL PARKS

- One primary portal sign at Elk/Beaver Lake Regional Park at the Beaver Beach Entrance – replacement sign installed January 12, 2023



- One new tertiary portal sign at East Point Regional Park due to a previous commitment to Parks Canada around jurisdictional confusion – installed the week of September 28, 2022



The following two signs are under a current contract for installation but have not been installed yet and are on hold pending Board direction.

- Primary sign at Thetis Lake Regional Park Main Entrance
- Secondary sign at Thetis Lake Regional Park Highlands Road entrance

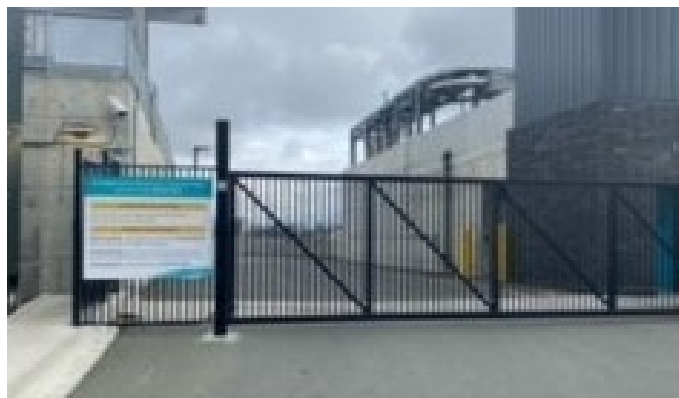
## HOUSING

- 2782 Spencer – new sign installed January 5, 2023



## WASTEWATER

- McLoughlin Point Wastewater Treatment Plant gate – new sign installed the week of April 11, 2022



**ENVIRONMENTAL RESOURCE MANAGEMENT**

- Port Renfrew Transfer Station – replacement sign – installed week of December 5, 2022

