

CAPITAL REGIONAL DISTRICT - INTEGRATED WATER SERVICES**Water Watch**

Issued July 12, 2021

Water Supply System Summary:**1. Useable Volume in Storage:**

Reservoir	July 31 5 Year Ave		July 31/20		July 11/21		% Existing Full Storage
	ML	MIG	ML	MIG	ML	MIG	
Sooke	75,224	16,549	75,992	16,718	77,593	17,070	83.7%
Goldstream	6,350	1,397	7,242	1,593	8,121	1,787	81.9%
Total	81,574	17,946	83,234	18,311	85,714	18,857	83.6%

2. Average Daily Demand:

For the month of July	226.3 MLD	49.79 MIGD
For week ending July 11, 2021	226.2 MLD	49.76 MIGD
Max. day July 2021, to date:	237.9 MLD	52.34 MIGD

3. Average 5 Year Daily Demand for July

Average (2016 - 2020)	197.3 MLD ¹	43.40 MIGD ²
-----------------------	------------------------	-------------------------

¹MLD = Million Litres Per Day ²MIGD = Million Imperial Gallons Per Day**4. Rainfall July:**

Average (1914 - 2020):	22.5 mm
Actual Rainfall to Date	0.0 mm (0% of monthly average)

5. Rainfall: Sep 1- Jul 11

Average (1914 - 2020):	1,594.2 mm
2020/2021	1,608.1 mm (101% of average)

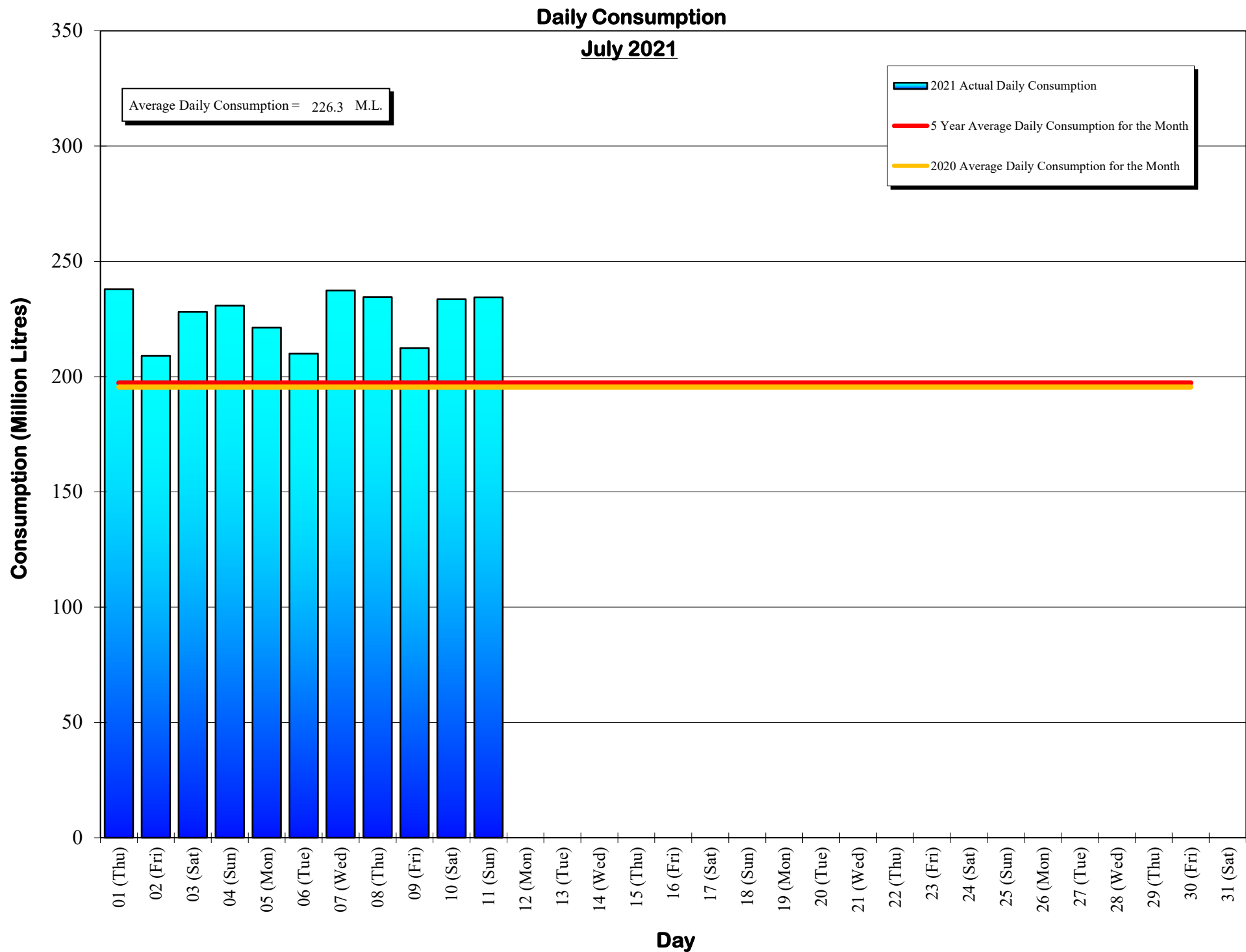
6. Water Conservation Action Required:

CRD's Stage 1 Water Conservation Bylaw is now in effect through to September 30, 2021.
Visit our website at www.crd.bc.ca/water for scheduling information.

If you require further information, please contact:

Ted Robbins, B.Sc., C.Tech
General Manager, CRD - Integrated Water Services
or
Glenn Harris, Ph D., RPBio
Senior Manager - Environmental Protection

Capital Regional District Integrated Water Services
479 Island Highway
Victoria, BC V9B 1H7
(250) 474-9600



Daily Consumptions: - July 2021

Date	Total Consumption		Air Temperature @ Japan Gulch		Weather Conditions	Precipitation @ Sooke Res.: 12:00am to 12:00am		
	(ML) ^{1.}	(MIG) ^{2.}	High (°C)	Low (°C)		Rainfall (mm)	Snowfall ^{3.} (mm)	Total Precip.
01 (Thu)	237.9	<=Max	25	17	Cloudy / P. Sunny	0.0	0.0	0.0
02 (Fri)	209.0	<=Min	26	17	Sunny / P. Cloudy	0.0	0.0	0.0
03 (Sat)	228.1		28	16	Sunny	0.0	0.0	0.0
04 (Sun)	230.8		27	15	Sunny / P. Cloudy	0.0	0.0	0.0
05 (Mon)	221.3		26	14	Sunny	0.0	0.0	0.0
06 (Tue)	210.0		29	14	Sunny	0.0	0.0	0.0
07 (Wed)	237.4		24	13	Sunny / P. Cloudy	0.0	0.0	0.0
08 (Thu)	234.5		24	11	Sunny / P. Cloudy	0.0	0.0	0.0
09 (Fri)	212.4		27	13	Sunny	0.0	0.0	0.0
10 (Sat)	233.6		27	13	Sunny	0.0	0.0	0.0
11 (Sun)	234.4		28	13	Sunny	0.0	0.0	0.0
12 (Mon)								
13 (Tue)								
14 (Wed)								
15 (Thu)								
16 (Fri)								
17 (Sat)								
18 (Sun)								
19 (Mon)								
20 (Tue)								
21 (Wed)								
22 (Thu)								
23 (Fri)								
24 (Sat)								
25 (Sun)								
26 (Mon)								
27 (Tue)								
28 (Wed)								
29 (Thu)								
30 (Fri)								
31 (Sat)								
TOTAL	2489.4 ML	547.69 MIG				0.0	0	0.0
MAX	237.9	52.34	29	17		0.0	0	0.0
AVG	226.3	49.79	26.5	14.2		0.0	0	0.0
MIN	209.0	45.98	24	11		0.0	0	0.0

1. ML = Million Litres

2. MIG = Million Imperial Gallons

3. 10% of snow depth applied to rainfall figures for snow to water equivalent.

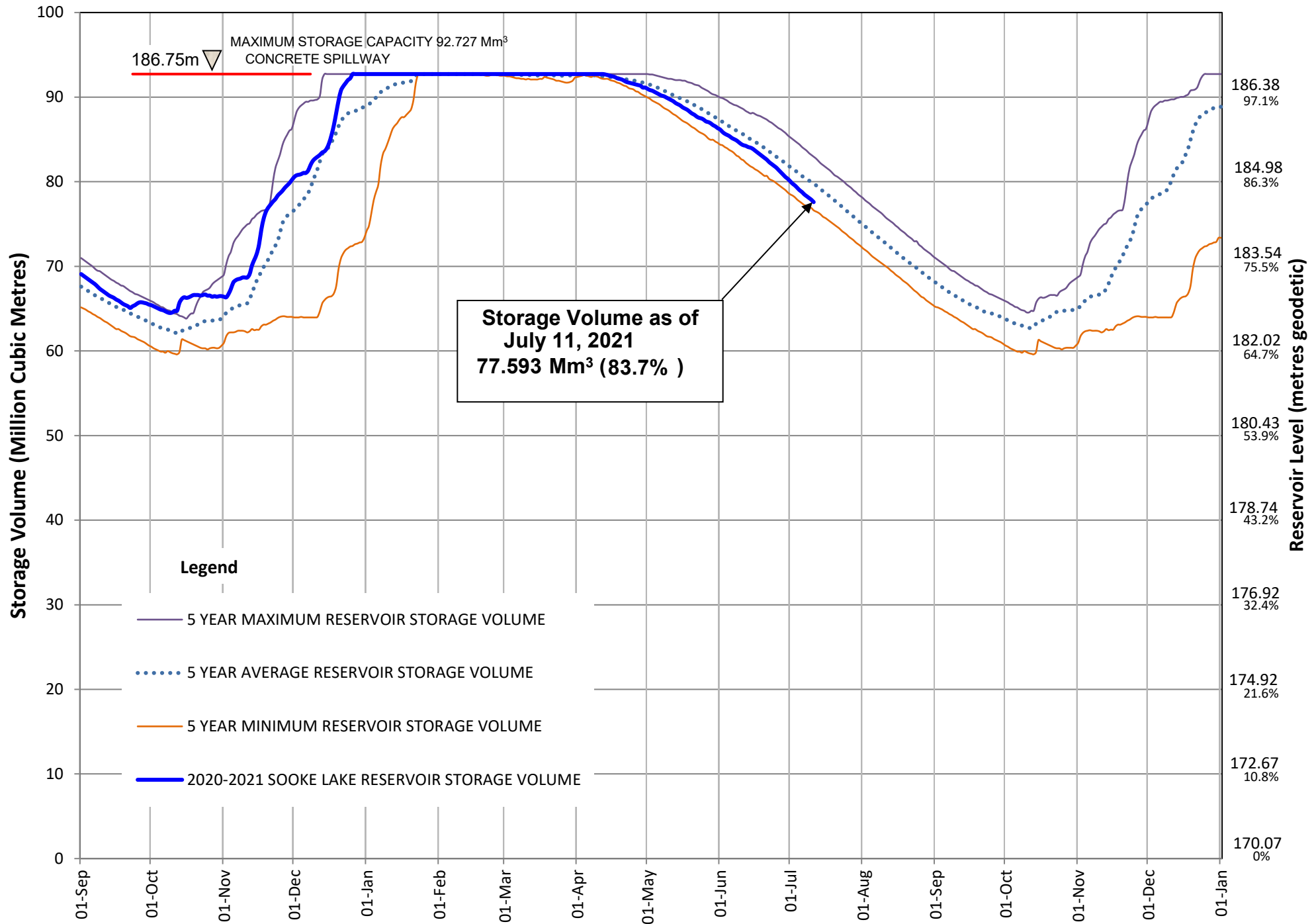
Average Rainfall for July (1914-2020)	22.5 mm
Actual Rainfall: July	0.0 mm
% of Average	0%
Average Rainfall (1914-2020): Sept 01 - Jul 11	1,594.2 mm
Actual Rainfall (2020/2021): Sept 01 - Jul 11	1,608.1 mm
% of Average	101%

Number days with precip. 0.2 or more
0

Water spilled at Sooke Reservoir to date (since Sept. 1) = 8.02 Billion Imperial Gallons
 = 36.50 Billion Litres

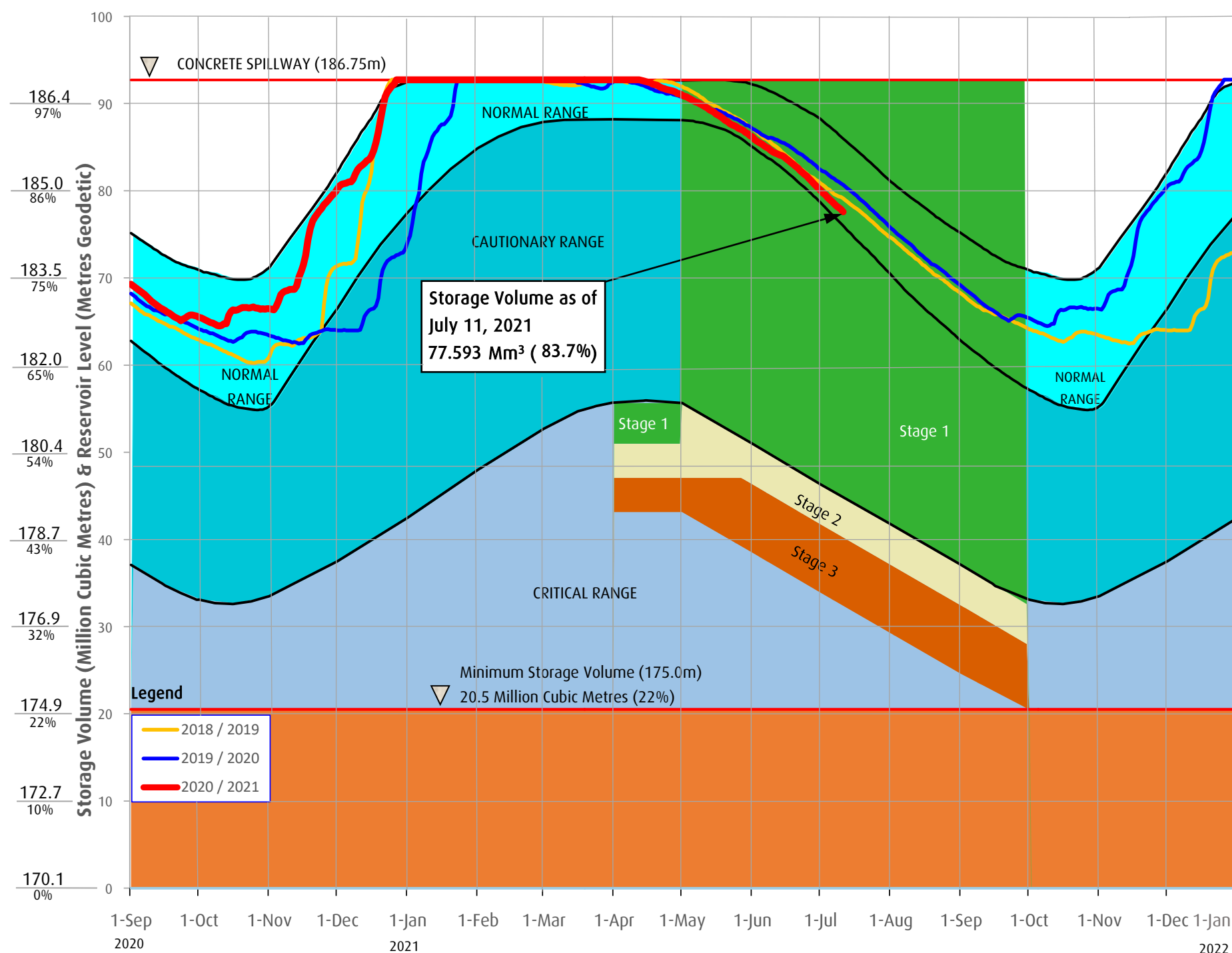
SOOKE LAKE RESERVOIR STORAGE SUMMARY

2020 / 2021



Sooke Lake Reservoir Storage Level

Water Supply Management Plan



FAQs

How are water restriction stages determined?

Several factors are considered when determining water use restriction stages, including,

1. Time of year and typical seasonal water demand trends;
2. Precipitation and temperature conditions and forecasts;
3. Storage levels and storage volumes of water reservoirs (Sooke Lake Reservoir and the Goldstream Reservoirs) and draw down rates;
4. Stream flows and inflows into Sooke Lake Reservoir;
5. Water usage, recent consumption and trends; and customer compliance with restriction;
6. Water supply system performance.

The Regional Water Supply Commission will consider the above factors in making a determination to implement stage 2 or 3 restrictions, under the Water Conservation Bylaw.

At any time of the year and regardless of the water use restriction storage, customers are encouraged to limit discretionary water use in order to maximize the amount of water in the Regional Water Supply System Reservoirs available for nondiscretionary potable water use.

Stage 1 is normally initiated every year from May 1 to September 30 to manage outdoor use during the summer months. During this time, lawn watering is permitted twice a week at different times for even and odd numbered addresses.

Stage 2 is initiated when it is determined that there is an acute water supply shortage. During this time, lawn water is permitted once a week at different times for even and odd numbered addresses.

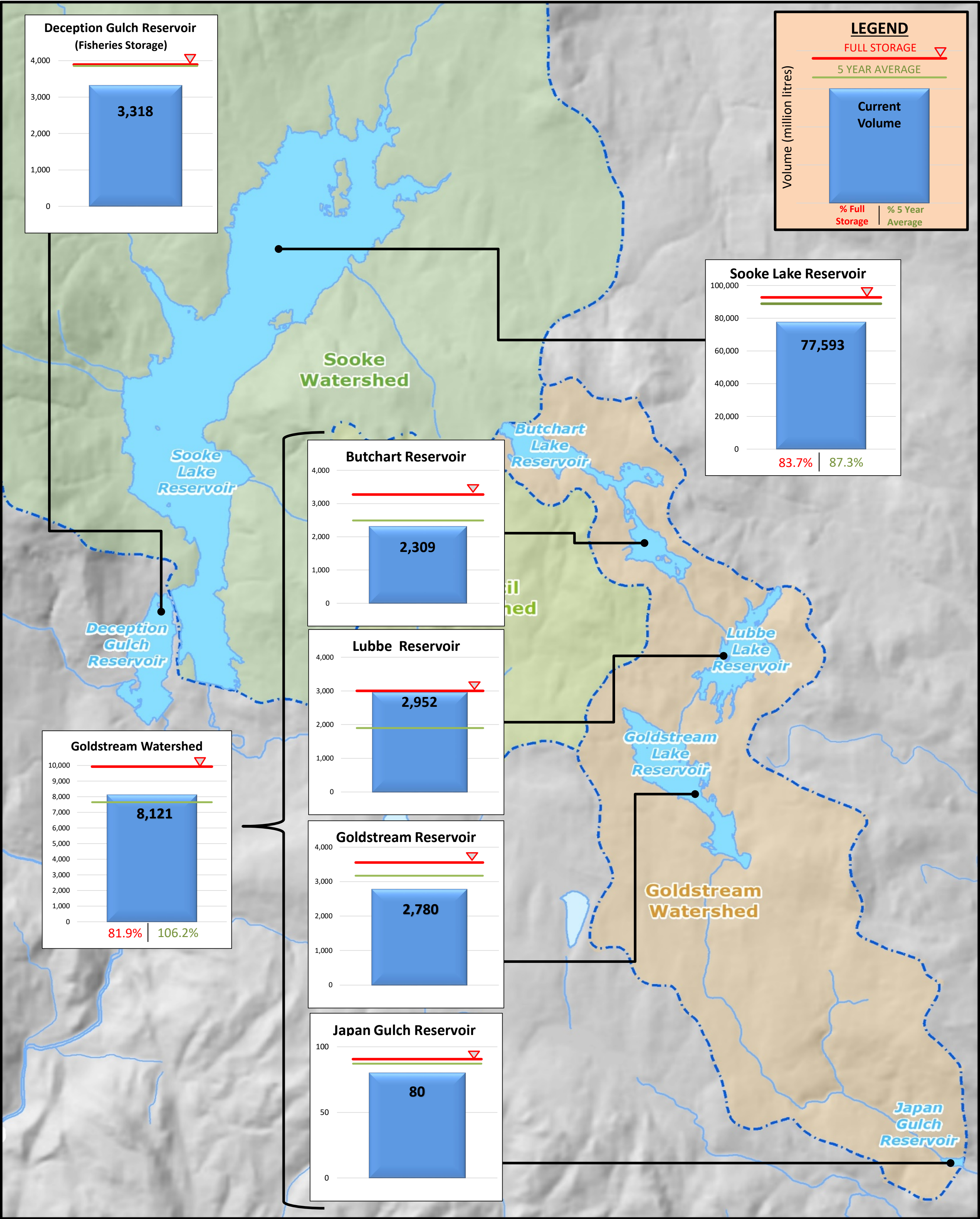
Stage 3 is initiated when it is determined that there is a severe water supply shortage. During this time, lawn watering is not permitted. Other outdoor water use activities are restricted as well.

For more information, visit www.crd.bc.ca/drinkingwater

CRD
Making a difference...together



Useable Reservoir Volumes in Storage for July 11, 2021



CAPITAL REGIONAL DISTRICT - INTEGRATED WATER SERVICES**Water Watch**

Issued June 28, 2021

Water Supply System Summary:**1. Useable Volume in Storage:**

Reservoir	June 30 5 Year Ave		June 30/20		June 27/21		% Existing Full Storage
	ML	MIG	ML	MIG	ML	MIG	
Sooke	81,927	18,024	82,599	18,172	81,108	17,844	87.5%
Goldstream	6,860	1,509	7,707	1,696	8,405	1,849	84.8%
Total	88,787	19,533	90,306	19,867	89,513	19,693	87.3%

2. Average Daily Demand:

For the month of June	193.6 MLD	42.60 MIGD
For week ending June 27, 2021	232.4 MLD	51.13 MIGD
Max. day June 2021, to date:	273.6 MLD	60.19 MIGD

3. Average 5 Year Daily Demand for June

Average (2016 - 2020)	175.2 MLD ¹	38.55 MIGD ²
-----------------------	------------------------	-------------------------

¹MLD = Million Litres Per Day ²MIGD = Million Imperial Gallons Per Day**4. Rainfall June:**

Average (1914 - 2020):	35.4 mm
Actual Rainfall to Date	34.8 mm (98% of monthly average)

5. Rainfall: Sep 1- Jun 27

Average (1914 - 2020):	1,581.1 mm
2020/2021	1,608.1 mm (102% of average)

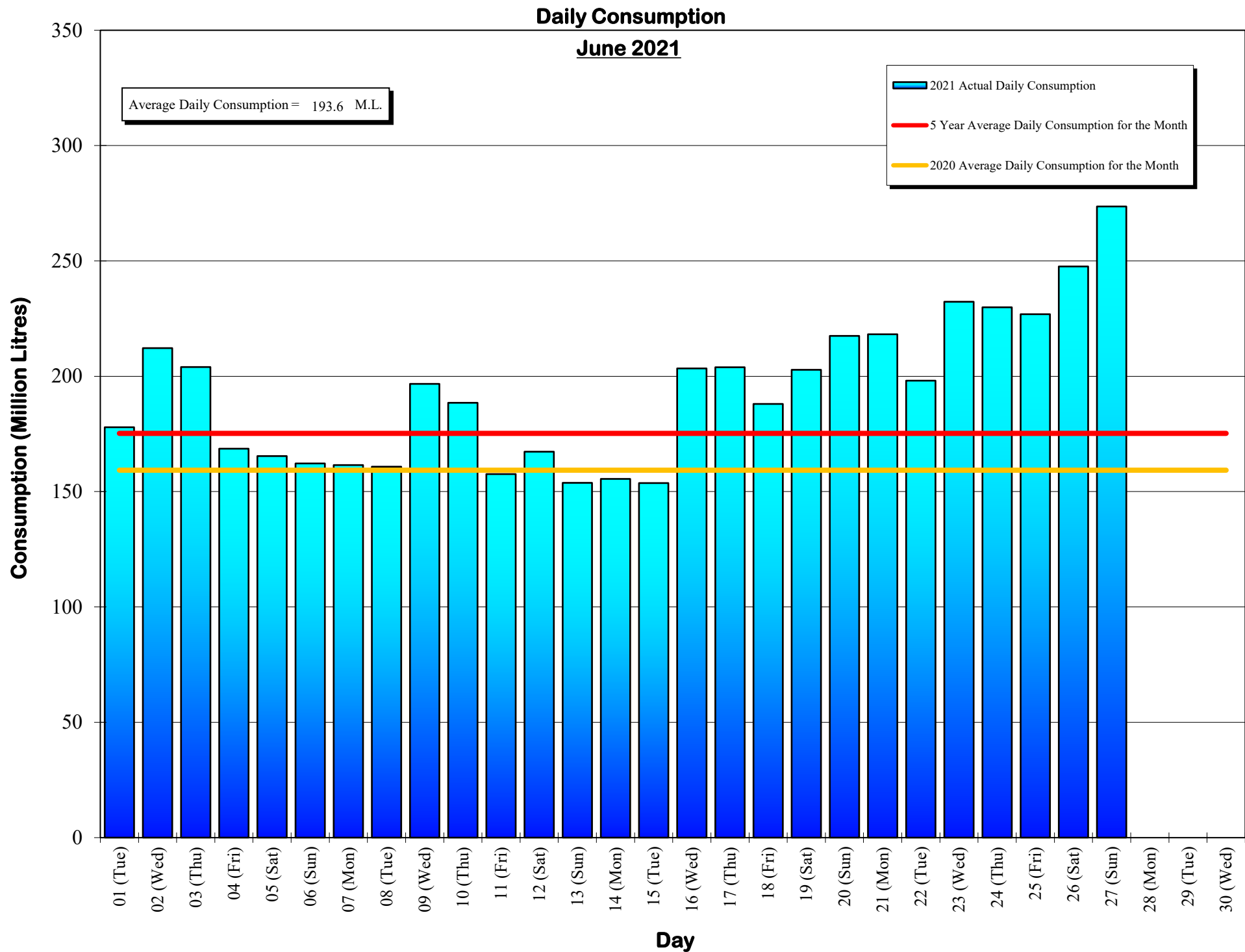
6. Water Conservation Action Required:

CRD's Stage 1 Water Conservation Bylaw is now in effect through to September 30, 2021.
Visit our website at www.crd.bc.ca/water for scheduling information.

If you require further information, please contact:

Ted Robbins, B.Sc., C.Tech
General Manager, CRD - Integrated Water Services
or
Glenn Harris, Ph D., RPBio
Senior Manager - Environmental Protection

Capital Regional District Integrated Water Services
479 Island Highway
Victoria, BC V9B 1H7
(250) 474-9600



Daily Consumptions: - June 2021

Date	Total Consumption		Air Temperature @ Japan Gulch		Weather Conditions	Precipitation @ Sooke Res.: 12:00am to 12:00am		
	(ML) ¹	(MIG) ²	High (°C)	Low (°C)		Rainfall (mm)	Snowfall ³ (mm)	Total Precip.
01 (Tue)	177.9		29	13	Sunny	0.0	0.0	0.0
02 (Wed)	212.2		30	15	Sunny	0.0	0.0	0.0
03 (Thu)	204.0		26	11	Sunny / P. Cloudy	0.0	0.0	0.0
04 (Fri)	168.6		19	10	Sunny / P. Cloudy / Showers	0.5	0.0	0.5
05 (Sat)	165.4		16	9	Sunny / P. Cloudy / Showers	0.5	0.0	0.5
06 (Sun)	162.2		12	6	Cloudy / Showers / P. Sunny	8.9	0.0	8.9
07 (Mon)	161.5		16	5	Sunny / P. Cloudy / Showers	1.0	0.0	1.0
08 (Tue)	160.8		17	6	Sunny / P. Cloudy / Showers	1.5	0.0	1.5
09 (Wed)	196.7		17	7	Sunny / P. Cloudy / Showers	0.8	0.0	0.8
10 (Thu)	188.5		18	7	Cloudy / P. Sunny	0.0	0.0	0.0
11 (Fri)	157.6		17	9	Sunny / P. Cloudy / Showers	3.3	0.0	3.3
12 (Sat)	167.3		21	8	Sunny / P. Cloudy / Showers	3.0	0.0	3.0
13 (Sun)	153.8		18	13	Cloudy / Rain	15.0	0.0	15.0
14 (Mon)	155.5		20	11	Sunny / P. Cloudy / Showers	0.3	0.0	0.3
15 (Tue)	153.7	<=Min	20	10	Sunny / P. Cloudy	0.0	0.0	0.0
16 (Wed)	203.4		22	10	Sunny	0.0	0.0	0.0
17 (Thu)	203.9		25	10	Sunny	0.0	0.0	0.0
18 (Fri)	188.0		22	12	Sunny	0.0	0.0	0.0
19 (Sat)	202.8		24	11	Sunny / P. Cloudy	0.0	0.0	0.0
20 (Sun)	217.5		28	12	Sunny	0.0	0.0	0.0
21 (Mon)	218.2		31	14	Sunny	0.0	0.0	0.0
22 (Tue)	198.1		29	15	Sunny	0.0	0.0	0.0
23 (Wed)	232.3		26	13	Sunny	0.0	0.0	0.0
24 (Thu)	229.9		28	14	Sunny	0.0	0.0	0.0
25 (Fri)	226.9		33	17	Sunny	0.0	0.0	0.0
26 (Sat)	247.6		37	19	Sunny	0.0	0.0	0.0
27 (Sun)	273.6	<=Max	39	20	Sunny	0.0	0.0	0.0
28 (Mon)								
29 (Tue)								
30 (Wed)								
TOTAL	5227.9 ML	1150.2 MIG				34.8	0	34.8
MAX	273.6	60.19	39	20		15.0	0	15.0
AVG	193.6	42.60	23.7	11.4		1.3	0	1.3
MIN	153.7	33.82	12	5		0.0	0	0.0

1. ML = Million Litres

2. MIG = Million Imperial Gallons

3. 10% of snow depth applied to rainfall figures for snow to water equivalent.

Average Rainfall for June (1914-2020)	35.4 mm
Actual Rainfall: June	34.8 mm
% of Average	98%
Average Rainfall (1914-2020): Sept 01 - Jun 27	1,581.1 mm
Actual Rainfall (2020/2021): Sept 01 - Jun 27	1,608.1 mm
% of Average	102%

Number days with precip. 0.2 or more
10

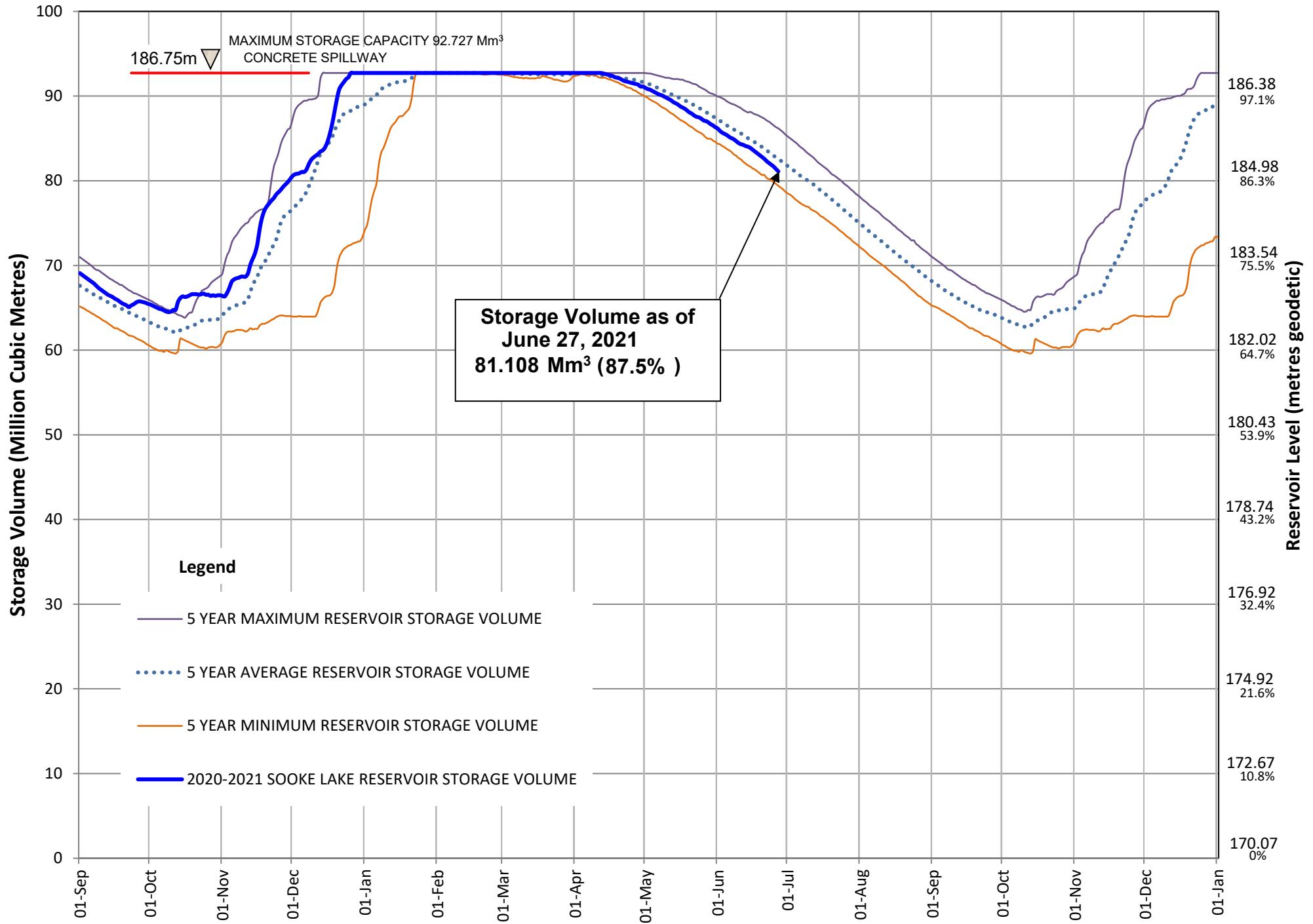
Water spilled at Sooke Reservoir to date (since Sept. 1) =

= 8.02 Billion Imperial Gallons

= 36.50 Billion Litres

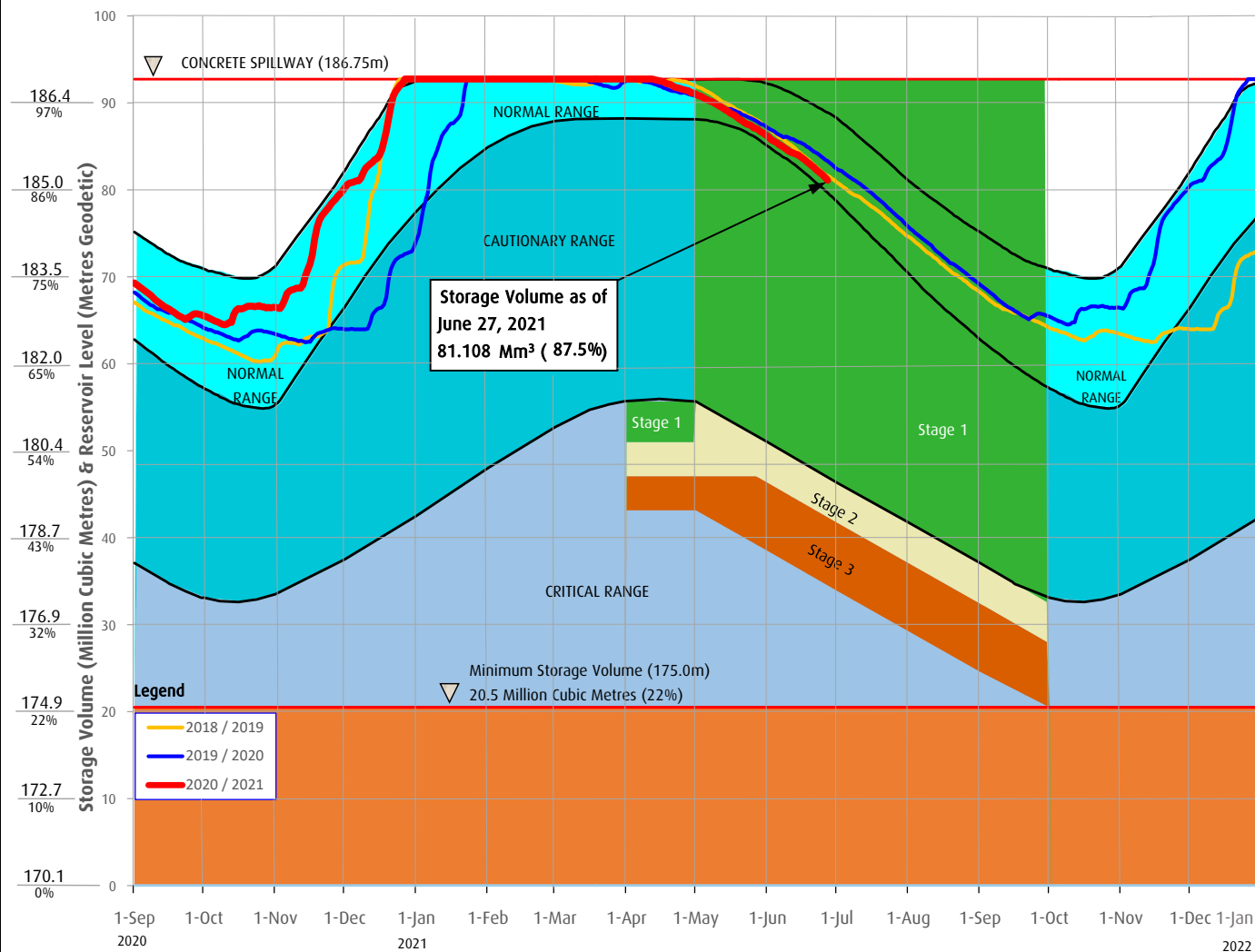
Sooke Lake Reservoir Storage Summary

2020 / 2021



Sooke Lake Reservoir Storage Level

Water Supply Management Plan



FAQs

How are water restriction stages determined?

Several factors are considered when determining water use restriction stages, including,

1. Time of year and typical seasonal water demand trends;
2. Precipitation and temperature conditions and forecasts;
3. Storage levels and storage volumes of water reservoirs (Sooke Lake Reservoir and the Goldstream Reservoirs) and draw down rates;
4. Stream flows and inflows into Sooke Lake Reservoir;
5. Water usage, recent consumption and trends; and customer compliance with restriction;
6. Water supply system performance.

The Regional Water Supply Commission will consider the above factors in making a determination to implement stage 2 or 3 restrictions, under the Water Conservation Bylaw.

At any time of the year and regardless of the water use restriction storage, customers are encouraged to limit discretionary water use in order to maximize the amount of water in the Regional Water Supply System Reservoirs available for nondiscretionary potable water use.

Stage 1 is normally initiated every year from May 1 to September 30 to manage outdoor use during the summer months. During this time, lawn watering is permitted twice a week at different times for even and odd numbered addresses.

Stage 2 Is initiated when it is determined that there is an acute water supply shortage. During this time, lawn water is permitted once a week at different times for even and odd numbered addresses.

Stage 3 Is initiated when it is determined that there is a severe water supply shortage. During this time, lawn watering is not permitted. Other outdoor water use activities are restricted as well.

For more information, visit www.crd.bc.ca/drinkingwater

CRD
Making a difference...together

Useable Reservoir Volumes in Storage for June 27, 2021

