

**CAPITAL REGIONAL DISTRICT
BYLAW NO. 4362**

**A BYLAW TO AMEND THE BOUNDARIES OF THE SOOKE-JUAN DE FUCA POOL, ARENA, AND
RECREATION SERVICE (BYLAW NO. 4029)**

WHEREAS:

- A. Under Bylaw No. 4029, Sooke and Electoral Area Recreation and Facilities Service Establishment Bylaw No. 1, 2016, the Regional Board expanded a recreation service to include provision of recreational community programs, to construct, equip, operate and maintain recreation facilities including but not necessarily limited to an ice arena, a swimming pool, and multi-purpose/community use rooms, and to authorize acquisition of recreation-related real property;
- B. Those individuals situated in Port Renfrew have difficulty utilizing the services provided at the Sooke and Electoral Area Recreation Centre ("SEAPARC");
- C. Approval of the participants may be obtained via the Juan de Fuca Electoral Area Director consenting on behalf, and the Municipal Council consenting on behalf of the District of Sooke, pursuant to the *Local Government Act*, and
- D. The Board wishes to amend Bylaw No. 4029 to remove Port Renfrew from the service;

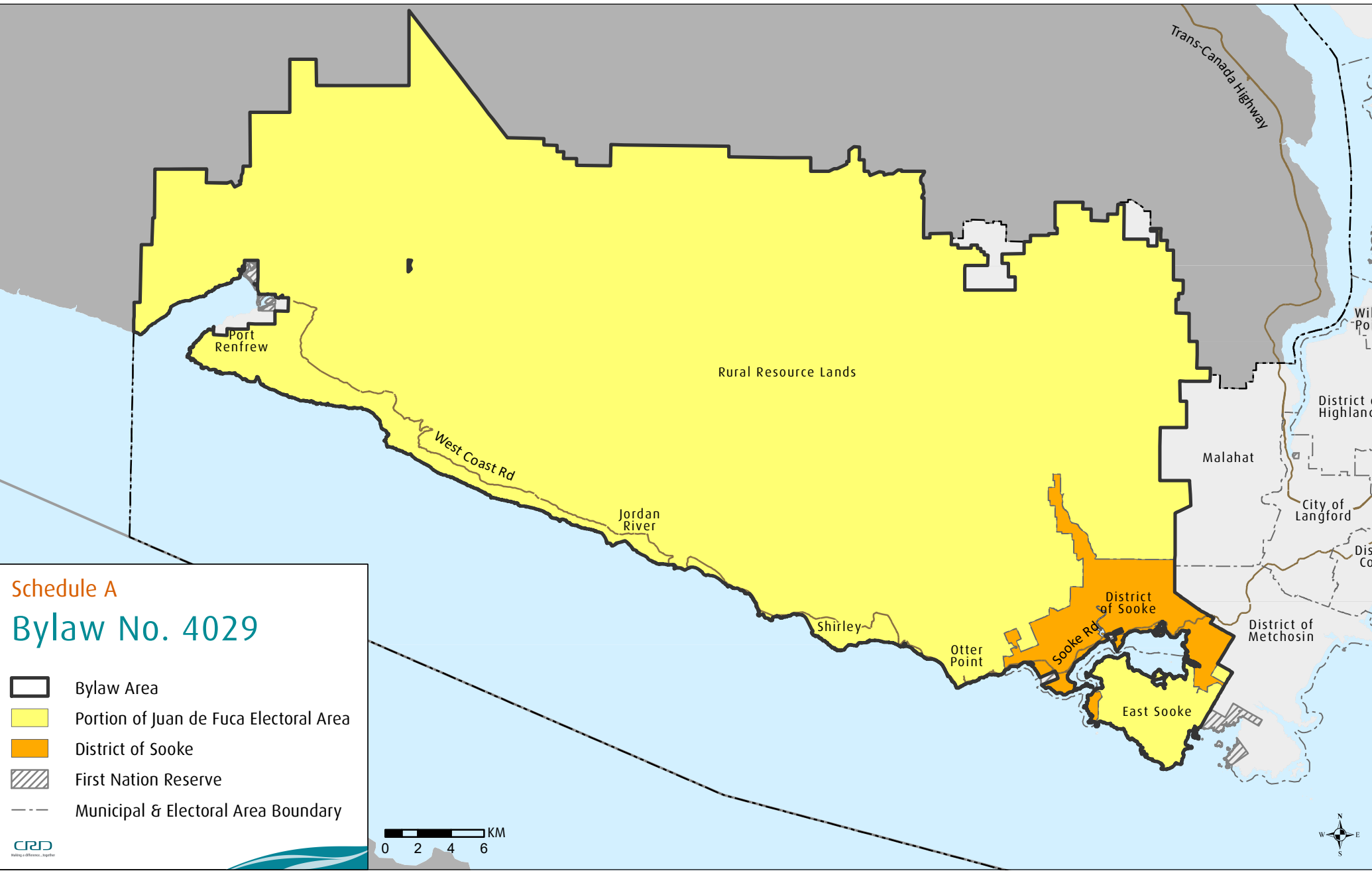
NOW THEREFORE, the Capital Regional District Board in open meeting assembled hereby enacts as follows:

- 1. Bylaw No. 4029, "Sooke and Electoral Area Recreation and Facilities Service Establishment Bylaw No. 1, 2016" is hereby amended by replacing its Schedule "A", the map identifying the boundaries of the service area, with the map attached to this bylaw as Schedule "A";
- 2. This bylaw may be cited for all purposes as "Sooke and Electoral Area Recreation and Facilities Service Establishment Bylaw No. 1, 2016, Amendment Bylaw No. 1, 2020".

READ A FIRST TIME THIS	8 th	day of July	2020
READ A SECOND TIME THIS	8 th	day of July	2020
READ A THIRD TIME THIS	8 th	day of July	2020
APPROVED BY TWO-THIRDS OF PARTICIPANTS THIS	20 th	day of July	2020
APPROVED BY THE INSPECTOR OF MUNICIPALITIES THIS	20 th	day of August	2020
ADOPTED THIS	th	day of	2020

CHAIR

CORPORATE OFFICER



Schedule A
Bylaw No. 4029

- Bylaw Area
- Portion of Juan de Fuca Electoral Area
- District of Sooke
- First Nation Reserve
- Municipal & Electoral Area Boundary

CRD
Working in difference... together

