



Capital Regional Hospital District > 2020 Provisional Budget

**Presentation to CRHD Board  
Wednesday October 30, 2019**

# 2020 Provisional Budget Summary

2

	2020 Provisional	2019 Final	H/(L) \$	H/(L) %
Requisition	29.4	30.7	(1.3)	(4.2)
Other	6.5	2.7	3.8	140.7
<b>Total Revenue</b>	<b>\$35.9M</b>	<b>\$33.4M</b>	<b>\$2.5M</b>	<b>7.5%</b>
Debt Servicing	23.3	24.4	(1.1)	(4.5)
Capital Grants	6.7	6.7	-	-
Other	5.9	2.3	3.6	156.5
<b>Total Expenses</b>	<b>\$35.9M</b>	<b>\$33.4M</b>	<b>\$2.5M</b>	<b>7.5%</b>

## Revenue

- CRHD begins receiving lease payments from Island Health related to the Summit at Quadra Village care facility
- The net impact results in a reduction to requisition

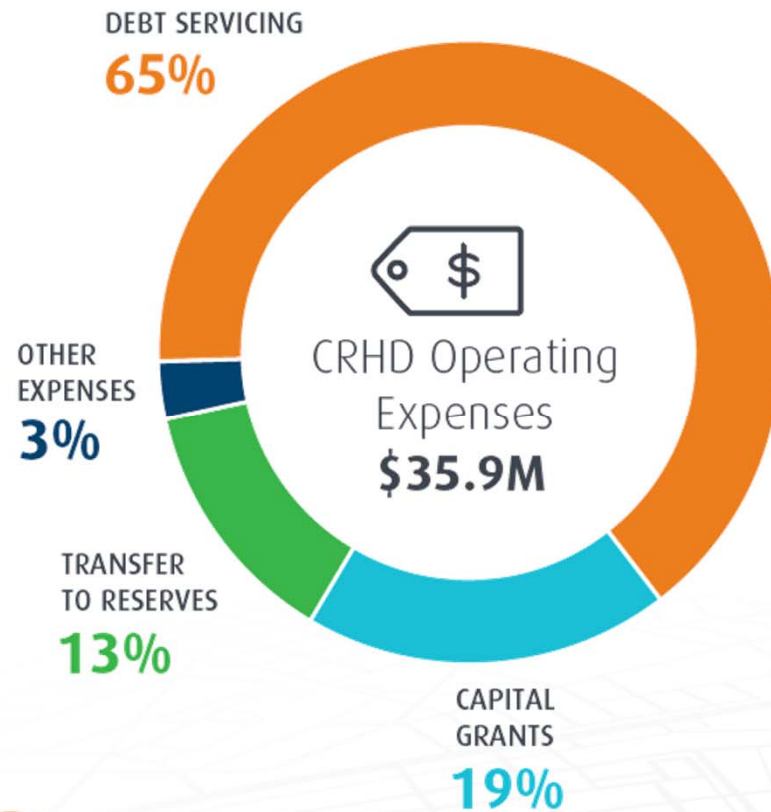
## Expense

- Debt servicing decreases due to changes in the capital plan and lower interest rates for new and renewing issuances
- Other expenses increase due to transfers to reserves for future Regional Housing First Program liability and for land & property holdings

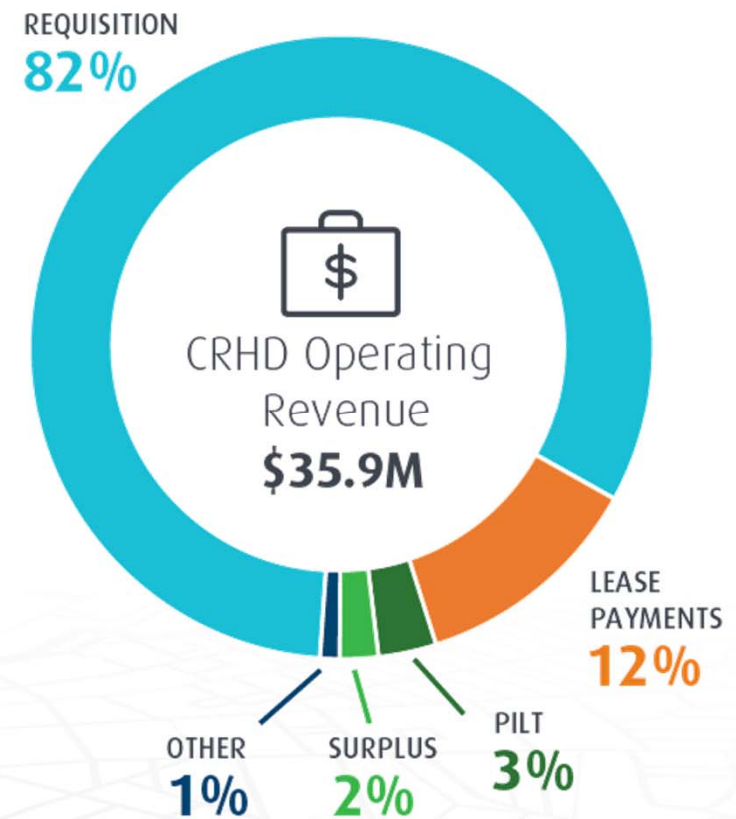


CRHD

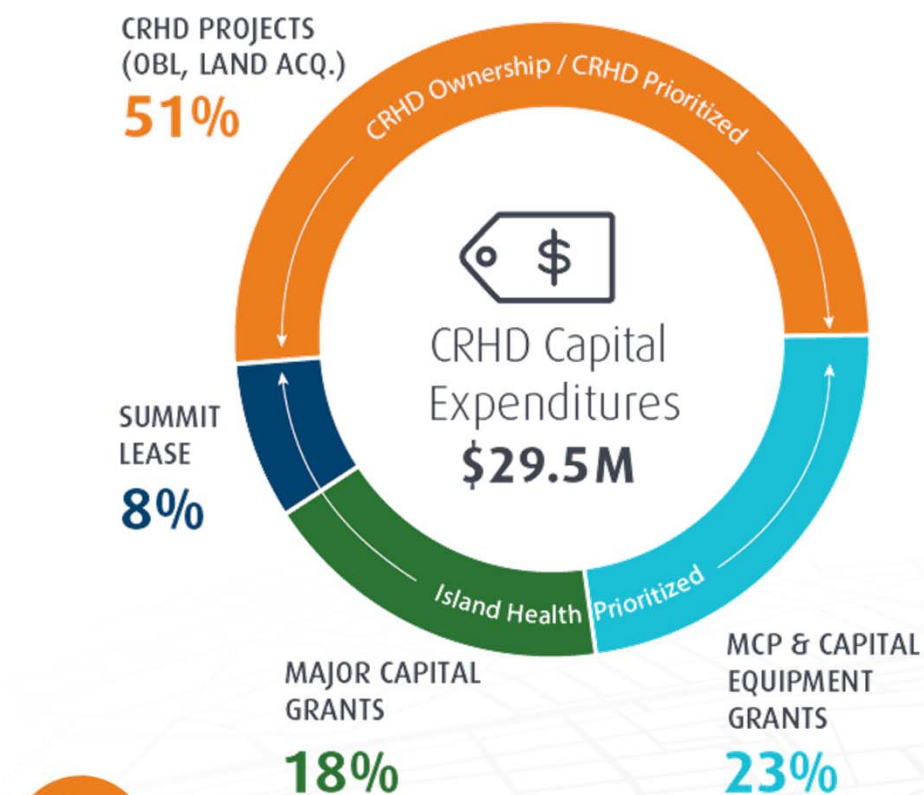
## EXPENDITURES



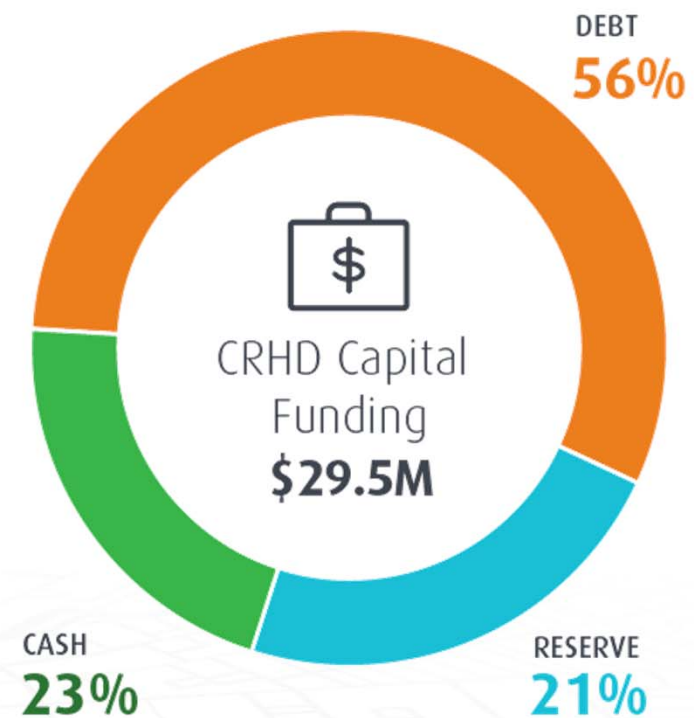
## SOURCES OF REVENUE



## EXPENDITURES



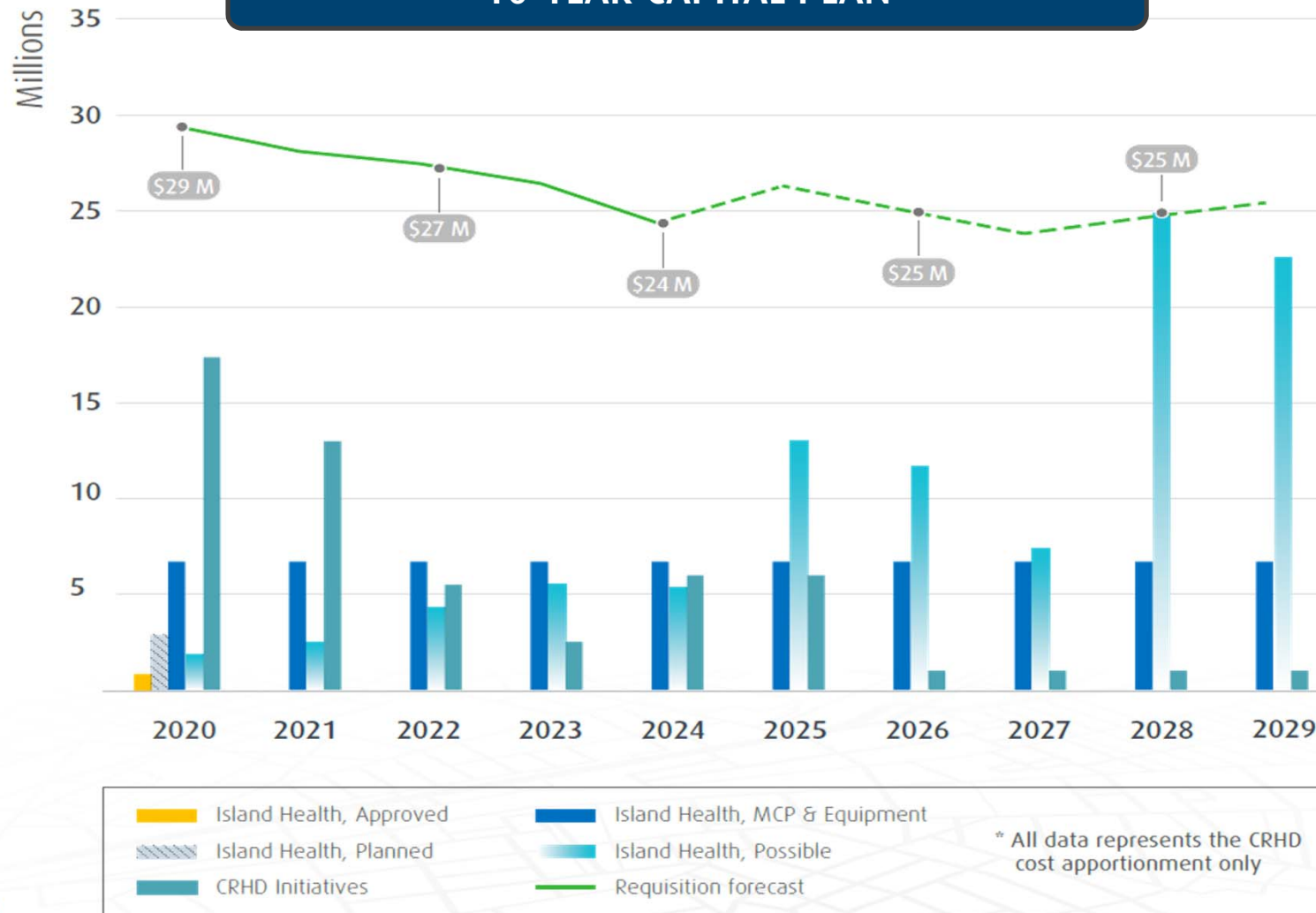
## SOURCES OF FUNDING



\*All Capital Funding originates from requisition

CRHD

## 10-YEAR CAPITAL PLAN



CRHD