

CAPITAL REGIONAL DISTRICT - INTEGRATED WATER SERVICES

Water Watch

Issued October 07, 2019

Water Supply System Summary:

1. Useable Volume in Storage:

Reservoir	October 31 5 Year Ave		October 31/18		October 6/19		% Existing Full Storage
	ML	MIG	ML	MIG	ML	MIG	
Sooke	64,739	14,243	60,374	13,282	63,632	13,999	68.6%
Goldstream	5,980	1,316	5,980	1,316	4,019	884	40.9%
Total	70,719	15,558	66,354	14,598	67,651	14,883	66.0%

2. Average Daily Demand:

For the month of October	113.0 MLD	24.85 MIGD
For week ending October 06, 2019	113.2 MLD	24.90 MIGD
Max. day October 2019, to date:	117.3 MLD	25.81 MIGD

3. Average 5 Year Daily Demand for October

Average (2014 - 2018)	109.0 MLD ¹	23.98 MIGD ²
-----------------------	------------------------	-------------------------

¹MLD = Million Litres Per Day ²MIGD = Million Imperial Gallons Per Day

4. Rainfall October:

Average (1914 - 2018):	169.9 mm
Actual Rainfall to Date	15.2 mm (9% of monthly average)

5. Rainfall: Sep 1- Oct 6

Average (1914 - 2018):	83.3 mm
2019	131.8 mm (158% of average)

6. Water Conservation Action Required:

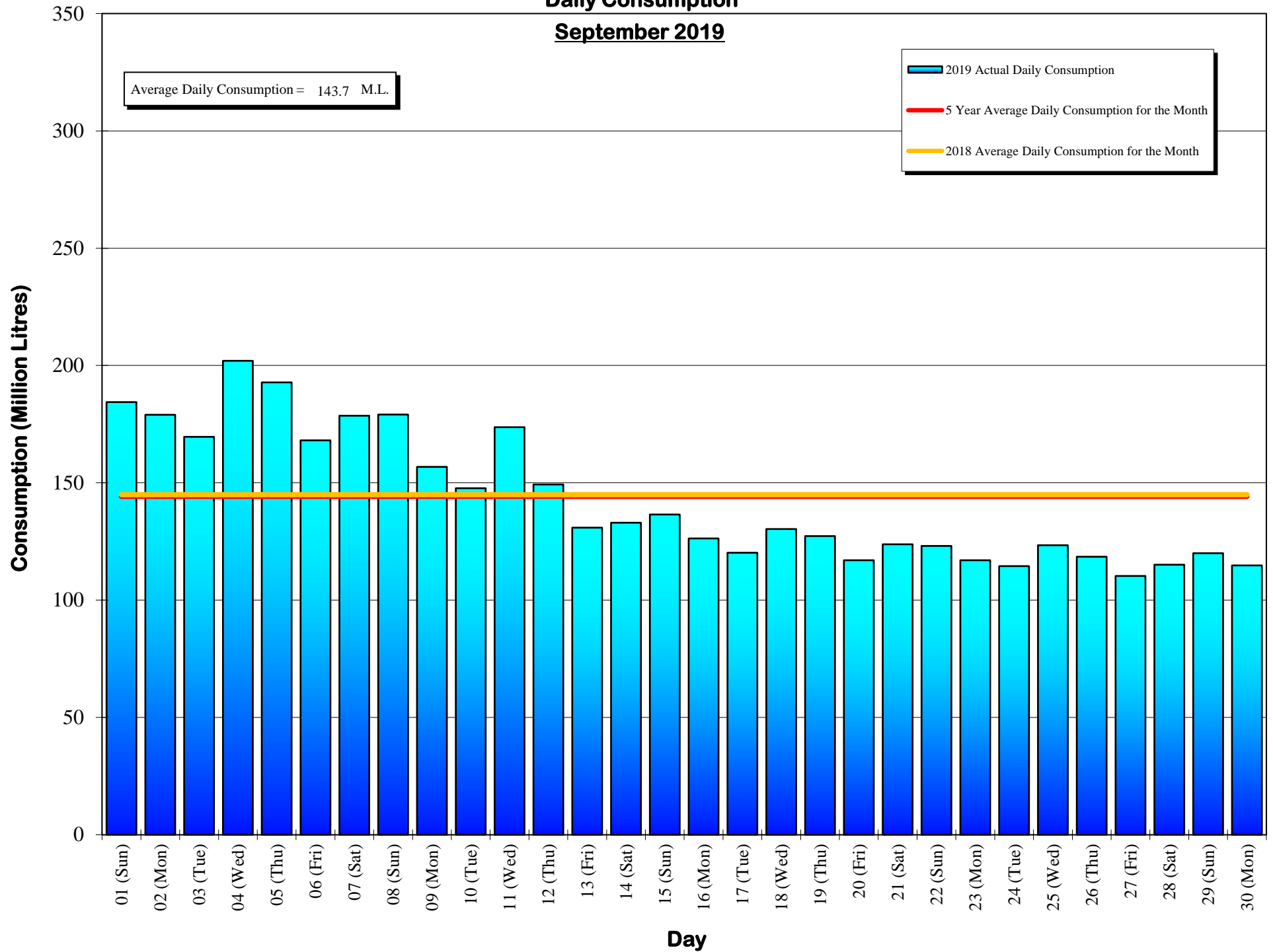
If each of us saves a little, together we can save a lot.
Check our website at www.crd.bc.ca/water for more information.

If you require further information, please contact:

Ted Robbins, B.Sc., C.Tech
General Manager, CRD - Integrated Water Services
or
Glenn Harris, Ph D., RPBio
Senior Manager - Environmental Protection

Capital Regional District Integrated Water Services
479 Island Highway
Victoria, BC V9B 1H7
(250) 474-9600

Daily Consumption September 2019



Daily Consumptions: - September 2019

Date	Total Consumption		Air Temperature @ Japan Gulch		Weather Conditions	Precipitation @ Sooke Res.: 12:00am to 12:00am		
	(ML) ^{1.}	(MIG) ^{2.}	High (°C)	Low (°C)		Rainfall (mm)	Snowfall ^{3.} (mm)	Total Precip.
01 (Sun)	184.4		23	14	Sunny / P. Cloudy	0.0	0.0	0.0
02 (Mon)	179.0		24	13	Sunny	0.0	0.0	0.0
03 (Tue)	169.6		27	14	Sunny / P. Cloudy	0.0	0.0	0.0
04 (Wed)	202.0	<=Max	23	13	Sunny	0.0	0.0	0.0
05 (Thu)	192.8		26	13	Sunny / P. Overcast	0.0	0.0	0.0
06 (Fri)	168.1		27	14	Sunny / P. Cloudy	0.0	0.0	0.0
07 (Sat)	178.6		22	13	Sunny / P. Cloudy	0.0	0.0	0.0
08 (Sun)	179.1		22	14	Cloudy / P. Sunny	0.0	0.0	0.0
09 (Mon)	156.8		18	12	Cloudy / Rain	16.0	0.0	16.0
10 (Tue)	147.7		18	12	Cloudy / P. Sunny	0.0	0.0	0.0
11 (Wed)	173.7		19	12	Sunny / P. Cloudy	0.0	0.0	0.0
12 (Thu)	149.3		16	13	Cloudy / Rain	30.7	0.0	30.7
13 (Fri)	130.9		18	13	Cloudy / Showers	4.6	0.0	4.6
14 (Sat)	133.0		17	13	Cloudy / Showers	13.2	0.0	13.2
15 (Sun)	136.5		18	10	Cloudy / Showers / P. Sunny	2.8	0.0	2.8
16 (Mon)	126.3		16	10	Cloudy / P. Sunny	0.0	0.0	0.0
17 (Tue)	120.2		15	11	Cloudy / Rain	22.9	0.0	22.9
18 (Wed)	130.3		17	11	Cloudy / Showers	1.3	0.0	1.3
19 (Thu)	127.3		18	10	Cloudy / Showers	0.5	0.0	0.5
20 (Fri)	117.0		18	11	Sunny / P. Cloudy	0.0	0.0	0.0
21 (Sat)	123.8		17	10	Cloudy / Showers / P. Sunny	0.8	0.0	0.8
22 (Sun)	123.1		16	13	Cloudy / Showers	4.8	0.0	4.8
23 (Mon)	117.0		14	11	Cloudy / Showers	10.1	0.0	10.1
24 (Tue)	114.5		19	10	Sunny / P. Cloudy	0.0	0.0	0.0
25 (Wed)	123.4		17	8	Sunny / P. Cloudy / Showers	0.8	0.0	0.8
26 (Thu)	118.5		18	11	Cloudy / Showers / P. Sunny	4.3	0.0	4.3
27 (Fri)	110.3	<=Min	15	7	Cloudy / Showers / P. Sunny	3.8	0.0	3.8
28 (Sat)	115.1		14	7	Sunny / P. Cloudy	0.0	0.0	0.0
29 (Sun)	120.0		13	7	Cloudy / P. Sunny	0.0	0.0	0.0
30 (Mon)	114.8		14	5	Sunny / P. Cloudy	0.0	0.0	0.0
TOTAL	4168.3 ML	917.03 MIG				116.6	0	116.6
MAX	202.0	44.45	27	14		30.7	0	30.7
AVE	143.7	31.41	18.6	11.2		3.9	0	3.9
MIN	110.3	24.27	13	5		0.0	0	0.0

1. ML = Million Litres

2. MIG = Million Imperial Gallons

3. 10% of snow depth applied to rainfall figures for snow to water equivalent.

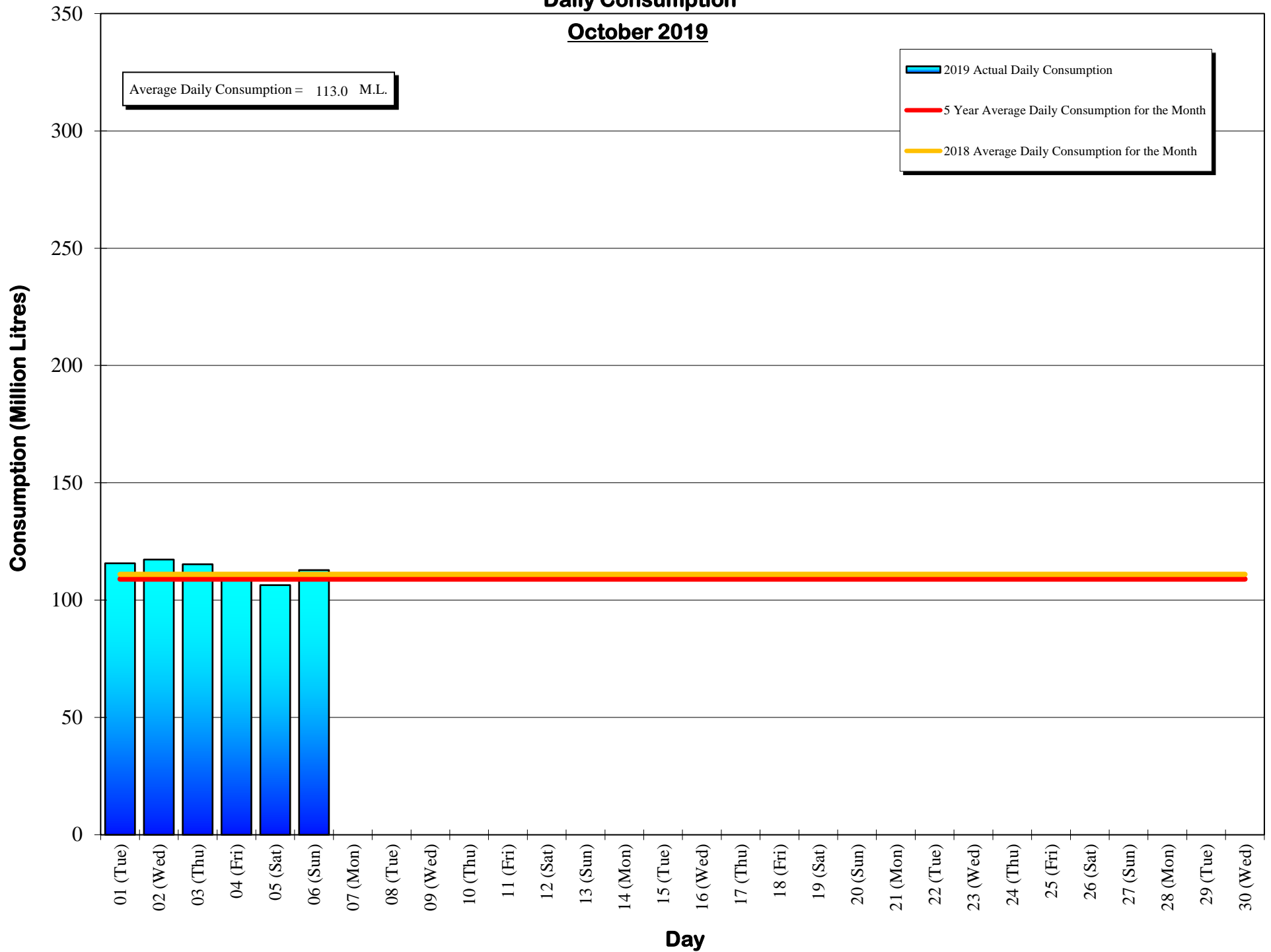
Average Rainfall for September (1914-2018)	64.2 mm
Actual Rainfall: September	116.6 mm
% of Average	182%
Average Rainfall (1914-2018): Sept 01 - Sep 30	64.2 mm
Actual Rainfall (2019): Sept 01 - Sep 30	116.6 mm
% of Average	182%

Number days with precip. 0.2 or more
14

Water spilled at Sooke Reservoir to date (since Sept. 1) = 0.00 Billion Imperial Gallons
= 0.00 Billion Litres

Daily Consumption

October 2019



Daily Consumptions: - October 2019

Date	Total Consumption		Air Temperature @ Japan Gulch		Weather Conditions	Precipitation @ Sooke Res.: 12:00am to 12:00am			
	(ML) ^{1.}		(MIG) ^{2.}	High (°C)		Low (°C)	Rainfall (mm)	Snowfall ^{3.} (mm)	Total Precip.
01 (Tue)	115.7		25.4	15	4	Sunny / P. Cloudy	0.0	0.0	0.0
02 (Wed)	117.3	<=Max	25.8	13	6	Cloudy / Showers / P. Sunny	1.0	0.0	1.0
03 (Thu)	115.3		25.4	14	7	Cloudy / Showers / P. Sunny	1.8	0.0	1.8
04 (Fri)	110.3		24.3	11	7	Cloudy / Showers / P. Sunny	9.4	0.0	9.4
05 (Sat)	106.4	<=Min	23.4	13	7	Cloudy / Showers / P. Sunny	3.0	0.0	3.0
06 (Sun)	112.8		24.8	14	5	Cloudy / P. Sunny	0.0	0.0	0.0
07 (Mon)									
08 (Tue)									
09 (Wed)									
10 (Thu)									
11 (Fri)									
12 (Sat)									
13 (Sun)									
14 (Mon)									
15 (Tue)									
16 (Wed)									
17 (Thu)									
18 (Fri)									
19 (Sat)									
20 (Sun)									
21 (Mon)									
22 (Tue)									
23 (Wed)									
24 (Thu)									
25 (Fri)									
26 (Sat)									
27 (Sun)									
28 (Mon)									
29 (Tue)									
30 (Wed)									
31 (Thu)									
TOTAL	677.8 ML		149.1 MIG				15.2	0	15.2
MAX	117.3		25.81	15	7		9.4	0	9.4
AVE	113.0		24.85	13.3	6.0		2.5	0	2.5
MIN	106.4		23.41	11	4		0.0	0	0.0

1. ML = Million Litres

2. MIG = Million Imperial Gallons

3. 10% of snow depth applied to rainfall figures for snow to water equivalent.

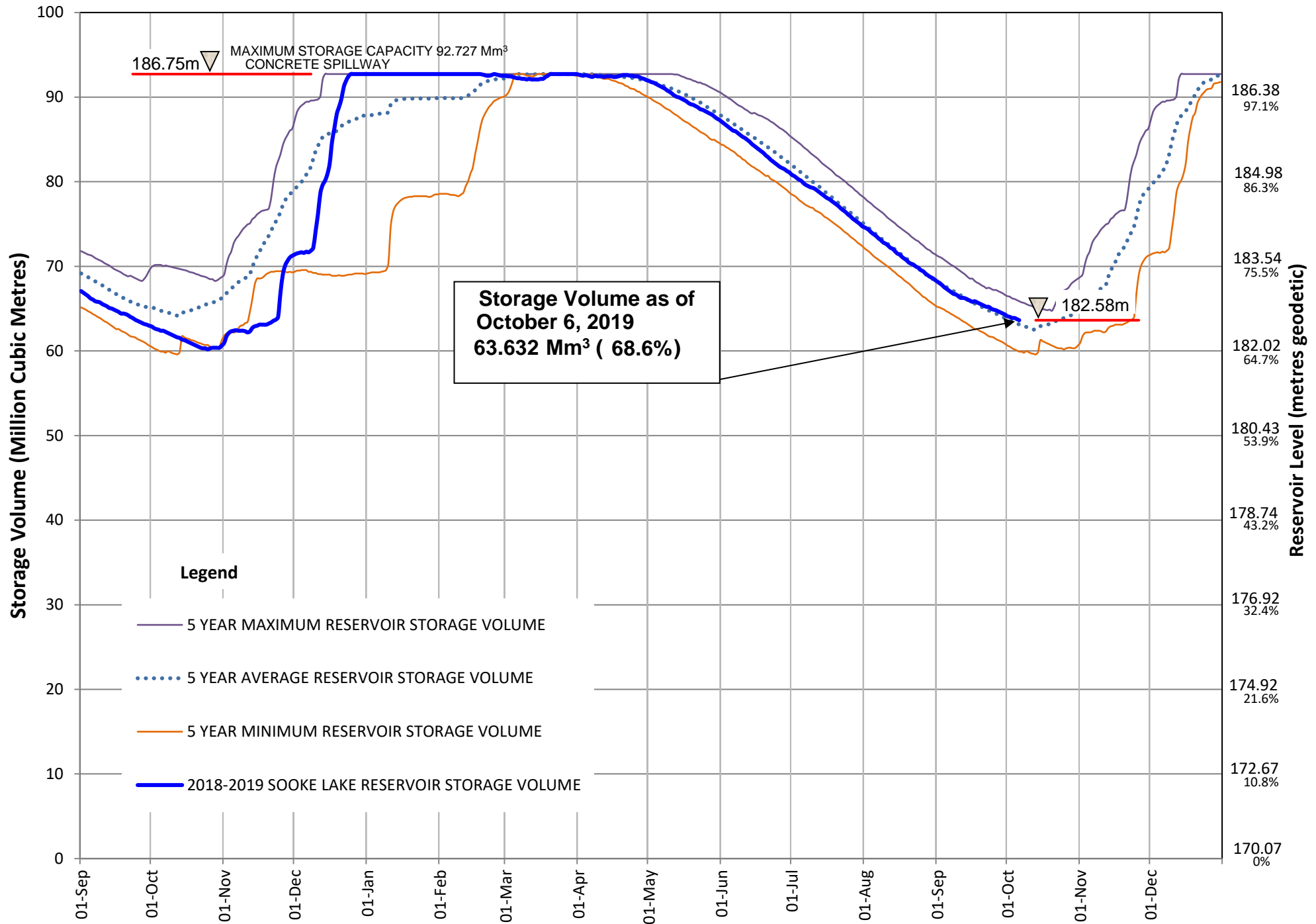
Average Rainfall for October (1914-2018)	169.9 mm
Actual Rainfall: October	15.2 mm
% of Average	9%
Average Rainfall (1914-2018): Sept 01 - Oct 06	83.3 mm
Actual Rainfall (2019): Sept 01 - Oct 06	131.8 mm
% of Average	158%

Number days with precip. 0.2 or more
4

Water spilled at Sooke Reservoir to date (since Sept. 1) = 0.00 Billion Imperial Gallons
 = 0.00 Billion Litres

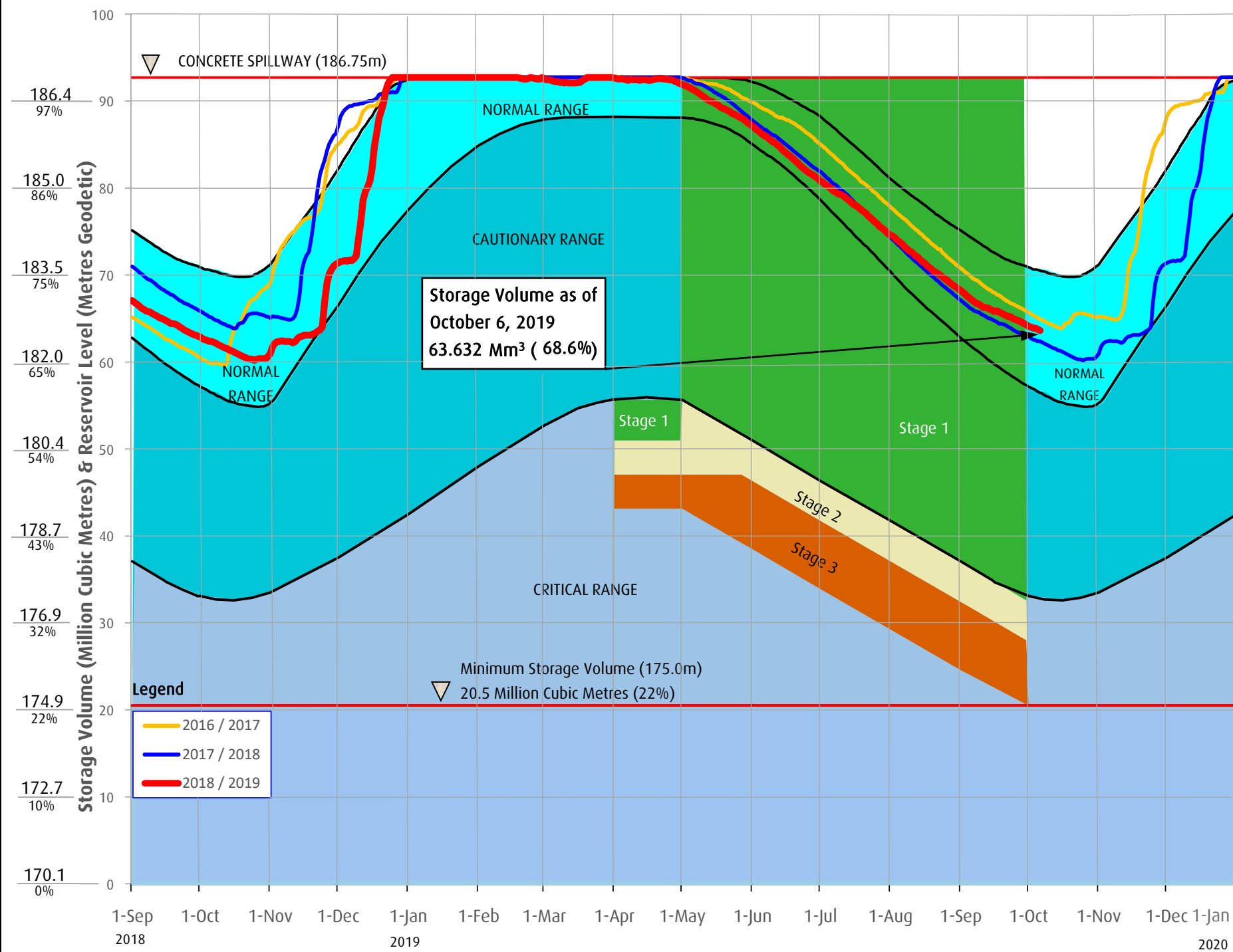
SOOKE LAKE RESERVOIR STORAGE SUMMARY

2018 / 2019



Sooke Lake Reservoir Storage Level

Water Supply Management Plan



FAQs

How are water restriction stages determined?

Several factors are considered when determining water use restriction stages, including,

1. Time of year and typical seasonal water demand trends;
2. Precipitation and temperature conditions and forecasts;
3. Storage levels and storage volumes of water reservoirs (Sooke Lake Reservoir and the Goldstream Reservoirs) and draw down rates;
4. Stream flows and inflows into Sooke Lake Reservoir;
5. Water usage, recent consumption and trends; and customer compliance with restriction;
6. Water supply system performance.

The Regional Water Supply Commisison will consider the above factors in making a determination to implement stage 2 or 3 restrictions, under the Water Conservation Bylaw.

At any time of the year and regardless of the water use restriction storage, customers are encouraged to limit discretionary water use in order to maximize the amount of water in the Regional Water Supply System Reservoirs available for nondiscretionary potable water use.

Stage 1 is normally initiated every year from May 1 to September 30 to manage outdoor use during the summer months. During this time, lawn watering is permitted twice a week at different times for even and odd numbered addresses.

Stage 2 Is initiated when it is determined that there is an acute water supply shortage. During this time, lawn water is permitted once a week at different times for even and odd numbered addresses.

Stage 3 Is initiated when it is determined that there is a severe water supply shortage. During this time, lawn watering is not permitted. Other outdoor water use activities are restricted as well.

For more information, visit www.crd.bc.ca/drinkingwater

CRD
Making a difference...together



Useable Reservoir Volumes in Storage for October 06, 2019

