

CRD Core Area Wastewater Service Area
Allocated Flow Capacities to Participants
Schedule B to Bylaw 2312 as Amended by Bylaw 4304

July 2025












Making a difference...together

1:25,000 NAD 1983 UTM Zone 10N

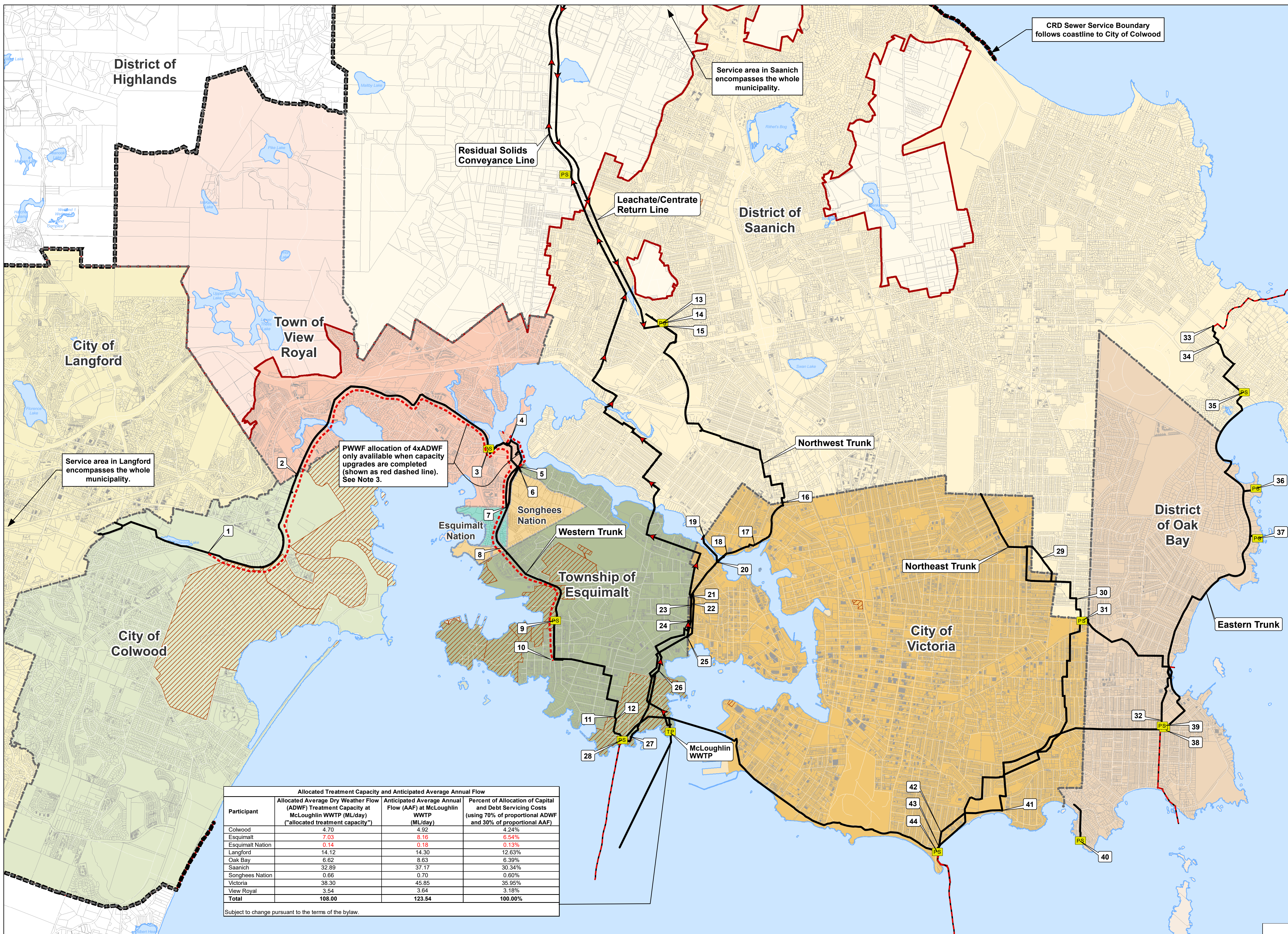
October 2019 | CoreAreaTrunkSewersAllocatedFlowCapacities_ScheduleB.mxd | qis@crd.bc.ca



- | | | | | | |
|---|---|---|--|---|------------------------------|
|  | Municipal Boundary |  | Existing Sewer Main |  | Treatment Plant |
| | CRD Growth Boundary | | Overflow/Outfall |  | Residuals Treatment Facility |
|  | CRD Core Area
Sewer Service Boundary |  | Future Sewer Main |  | Pump Station |
|  | DND Areas |  | Wastewater inflow Allotment
at Indicated location (Inflow ID) | | |

Notes:

1. ADWF = Average Dry Weather Flow (June 1 to August 31).
PWWF = Peak Wet Weather Flow (max flow over a 24-hour period).
L/s = Litres per second. MLD = Mega Litres per day.
2. The ADWF Allocations are based the Core Area Wastewater Treatment Program where the total ADWF plant capacity of 108 MLD was allocated out to each participant based on their requested capacity.
3. PWWF is based on 4xADWF which the maximum flow allowed at McLoughlin WWTP as approved by the Ministry of Environment. These allocations will be available when the upgrades identified on the map are completed. Capacity upgrade at the Craigflower Pump Station can be achieved by forcemain twinning. Pump upgrades are not required to meet the PWWF allocation.
4. Total peak flows may not add cumulatively at downstream locations due to system attenuation (population-based on Harmon peaking factor).
5. Inflow allocations may not add cumulatively to participant totals due to inter-municipal cross boundary connections. Inter-municipal flows are not measured; they are estimated as shown in blue text in the tables.
6. Location and extent of future CRD sewers and facilities as depicted are preliminary and may change in accordance with the final system design.
7. Allocations are available up until the capacity at McLoughlin WWTP has been reached. New infrastructure and reallocation of flows will then be required. Allocations can be transferred amongst participants pursuant to the terms of the bylaw.
8. Note some infrastructure is currently being constructed as part of the Core Area Wastewater Treatment Project but is shown as existing on this map.



Allocated Treatment Capacity and Anticipated Average Annual Flow			
Participant	Allocated Average Dry Weather Flow (ADWF) Treatment Capacity at McLoughlin WWTP (ML/day) ("allocated treatment capacity")	Anticipated Average Annual Flow (AAF) at McLoughlin WWTP (ML/day)	Percent of Allocation of Capital and Debt Servicing Costs (using 70% of proportional ADWF and 30% of proportional AAF)
Cohowood	4.70	4.92	4.24%
Esquimalt	7.03	8.16	8.54%
Esquimalt Nation	0.14	0.18	0.13%
Langford	14.12	14.30	12.63%
Oak Bay	6.62	8.63	6.39%
Saanich	32.89	37.17	30.34%
Songhees Nation	0.68	0.70	0.65%
Victoria	38.30	45.85	35.95%
View Royal	3.54	3.64	3.18%
Total	108.00	123.54	100.00%

Subject to change pursuant to the terms of the bylaw

****See Note 3**

Town of View Royal			
Inflow ID	Inflow Name	ADWF Allocation (L/s)	PWWF Allocation (L/s)
3	Craigflower PS	41.0	164.0
4	Shoreline Trunk**	1.6	6.4
28	Macaulay Point PS	41.0	164.0
Total		83.6	334.4

City of Colwood			
Inflow ID	Inflow Name	ADWWF Allocation (L/s)	PWWF Allocation** (L/s)
2	Parsons	54.4	217.5
3	Craigflower PS	54.4	217.5
28	Macaulay Point PS	54.4	217.5
Total		54.4	217.5
		(4.70 MLD)	

Songhees Nation			
Inflow ID	Inflow Name	ADWF Allocation (L/s)	PWWF Allocation (L/s)
6	Songhees Nation	6.8	27.1
4	Shoreline Trunk**	6.8	27.1
3	Craighollow PS	6.8	27.1
8	Maplebank	0.1	0.5
28	Macaulay Point PS	7.3	29.3
Total		7.3	29.3
		(0.66 MLD)	

14	Centrate Line	
	ADWF Allocation (L/s)	PWWF Allocation (L/s)
	45.0	45.0

15	Leachate Line	
	ADWF Allocation (L/s)	PWWF Allocation (L/s)
	39.2	39.2

Note: the maximum daily allocations for the Centrate and Leachate Lines are capped at the values noted.

Esquimalt Nation			
Inflow ID	Inflow Name	ADWF Allocation (L/s)	PWWF Allocation (L/s)
7	Esquimalt Nation	1.6	6.5
4	Shoreline Trunk**	1.6	6.5
3	Craigflower PS	1.6	6.5
28	Macaulay Point PS	1.6	6.5
Total		1.6	6.5
		(0.14 MLD)	

Township of Esquimalt			
Info #	Info Name	ADWF Allocation (L/s)	PWWF Allocation (L/s)
3	Craigflower PS	4.4	5.7
4	Shoreline Trunk	1.4	5.7
5	Esquimalt Panhandle	1.4	5.7
9	Lang Cove PS (DND)	9.8	23.1
9a	Lang Cove PS (Esquimalt)	9.0	35.9
10	Dockyard (DND)	6.7	26.8
	Dockyard (Esquimalt)	4.8	19.2
11	Kinver	5.1	20.4
12	Pooder Place	0.7	2.8
21	Devonshire (Esquimalt)	21.0	83.9
	Devonshire (Songhees Nation)	0.4	1.5
24	Wilson (Esquimalt)	4.2	16.6
	Wilson (Victoria)	0.1	0.4
	Head (DND)	2.9	11.4
26	Head (Esquimalt)	16.5	66.1
27	Arson (DND)	2.8	11.2
28	Macaulay Point PS	81.4	325.6
	Total	183.6	815.6

District of Saanich			
Inflow ID	Inflow Name	ADWF Allocation (L/s)	PWWF Allocation (L/s)
13	Manigold PS	152.7	610.9
16	City Boundary	73.2	292.7
19	Harriet	37.8	151.1
28	Macaulay Point PS	266.7	1066.8
29	Townley	2.0	8.2
30	Havillan	6.6	26.3
33	Arbutus	81.9	327.7
34	Haro - Uvic	9.2	36.7
35	Penthyrn LS (Saanich)	10.7	42.9
	Penthyrn LS (Oak Bay)	0.1	0.2
44	Clover Point PS	113.9	455.7
	Total	380.6	1522.5
		(32.8% M.D)	

City of Victoria				
Inflow ID	Inflow Name	ADFWF Allocation (L/s)	PWWF Allocation (L/s)	
17	Cecelia (Victoria)	33.5	133.3	
	Cecelia (Saanchi)	2.8	11.0	
18	Chapman and Gorge (Victoria)	3.9	15.6	
	Chapman and Gorge (Saanchi)	0.2	0.8	
20	Sekirk (Victoria)	2.6	10.5	
	Sekirk (Esquimalt)	0.6	2.3	
22	Langford -Vic West (Victoria)	1.9	7.5	
	Langford -Vic West (Esquimalt)	0.3	1.3	
23	Hewarad	0.1	88.2	
	Sea Terrace (Victoria)	3.6	14.5	
	Sea Terrace (Esquimalt)	0.2	0.8	
	Macaulay Point PS	67.7	270.6	
31	Trent Net (Victoria)	81.5	325.9	
	Trent Net (Saanchi)	2.9	11.5	
41	Hollywood (Victoria)	4.0	15.9	
	Hollywood (Oak Bay)	2.3	9.3	
42	Olive	266.0	1064.1	
43	Clover Net	22.2	88.9	
44	Clover Point PS	375.6	1502.4	
	Total	443.3	1773.0	
		(38.30 Ml/D)		

District of Oak Bay			
InfoID	Inflow Name	ADMF Allocation (L/s)	PWWF Allocation (L/s)
32	Windser	5.0	19.9
38	Humber	7.1	28.4
37	Rutland	4.4	17.8
	Currie Net (Oak Bay)	38.5	154.2
38	Currie Net (Victoria)	1.9	7.4
	Currie Net (Saanich)	0.6	2.4
39	Currie Lift Station (Oak Bay)	0.2	76.7
39	Currie Lift Station (Victoria)	0.03	0.13
40	Harington Point PS	2.3	9.3
44	Clover Point PS	76.6	306.5
	Total	76.6 (6.62 MLD)	306.5

City of Langford			
Inflow ID	Inflow Name	ADWF Allocation (L/s)	PWWF Allocation** (L/s)
1	Meaford	163.5	654.0
2	Meaford (Colwood)	0.4	1.4
3	Parsons	163.5	654.0
3	Craigflower PS	163.5	654.0
28	Macaulay Point PS	163.5	654.0
	Total	163.5	654.0
		(14.1 ML/D)	