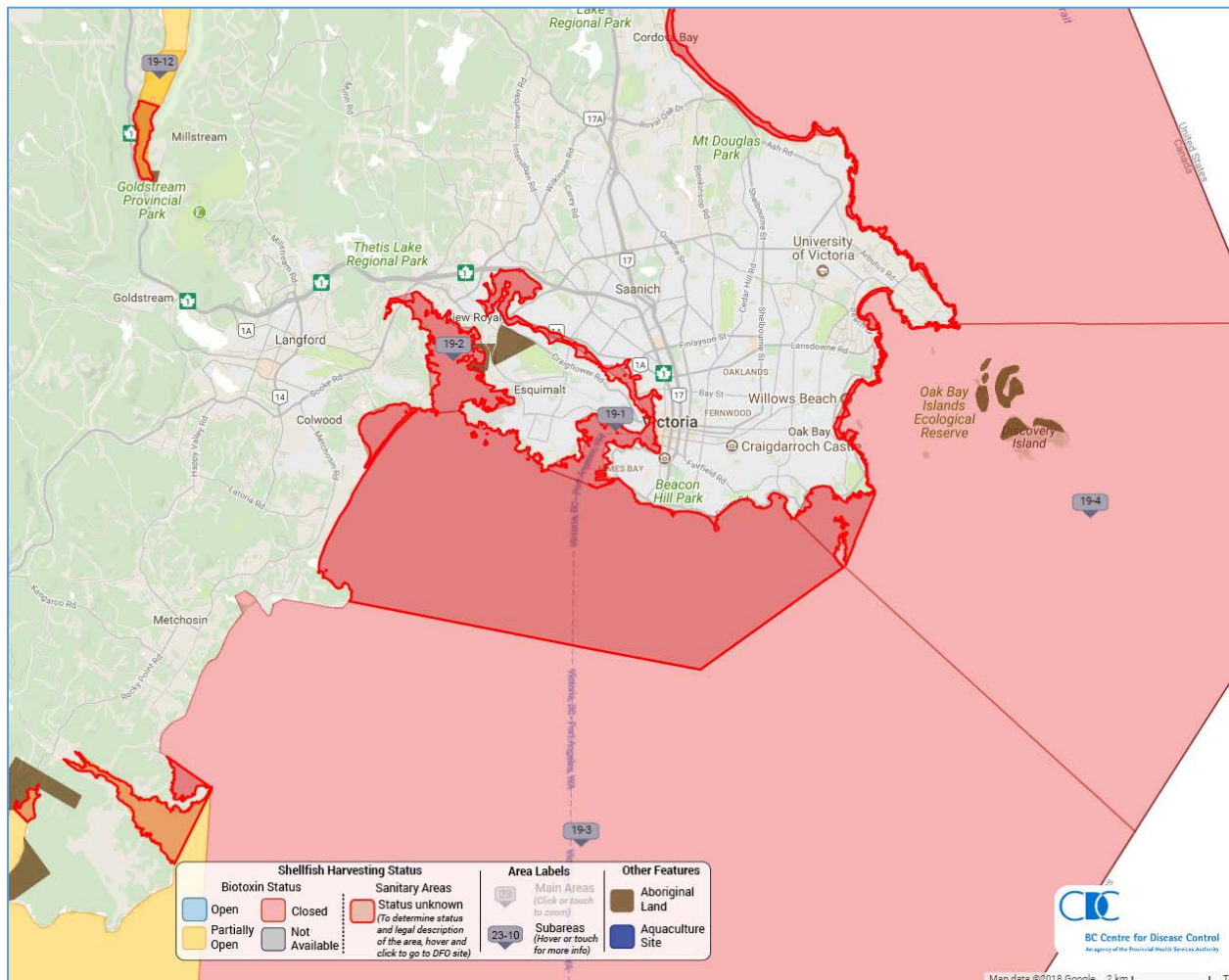


Map: Department of Fisheries and Oceans – Sanitary Closure Areas

Sanitary shellfish closure associated with the CRD's Macaulay and Clover points outfalls, the region's harbours, and municipal stormwater discharges along the shoreline (dark red with red border; DFO Sanitary Closure 19-1).



This closure extends from Albert Head to beyond Cordova Bay and is approximately 56 km² in size.

The broader red shaded area (without red border) shows the area that is also closed to harvesting of all bivalves due to biotoxin concerns (e.g., red tide, also known as paralytic shellfish poisoning or PSP).

This biotoxin closure (in DFO Area 19) currently extends beyond the boundary of this map from William Head (DFO Subarea 19-3) to past Sidney (DFO Subarea 19-6).

Source: <http://maps.bccdc.org/shellfish/>