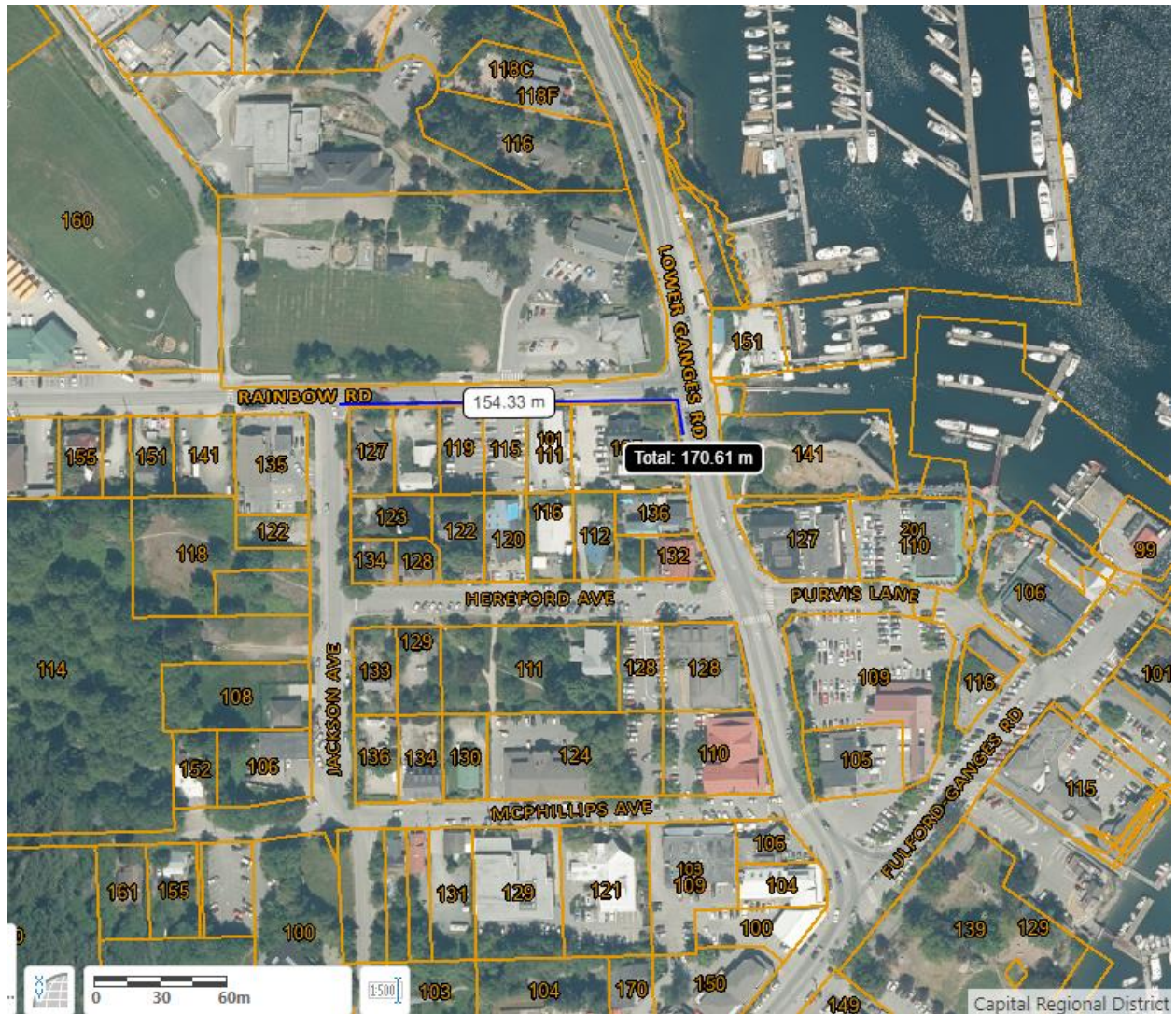
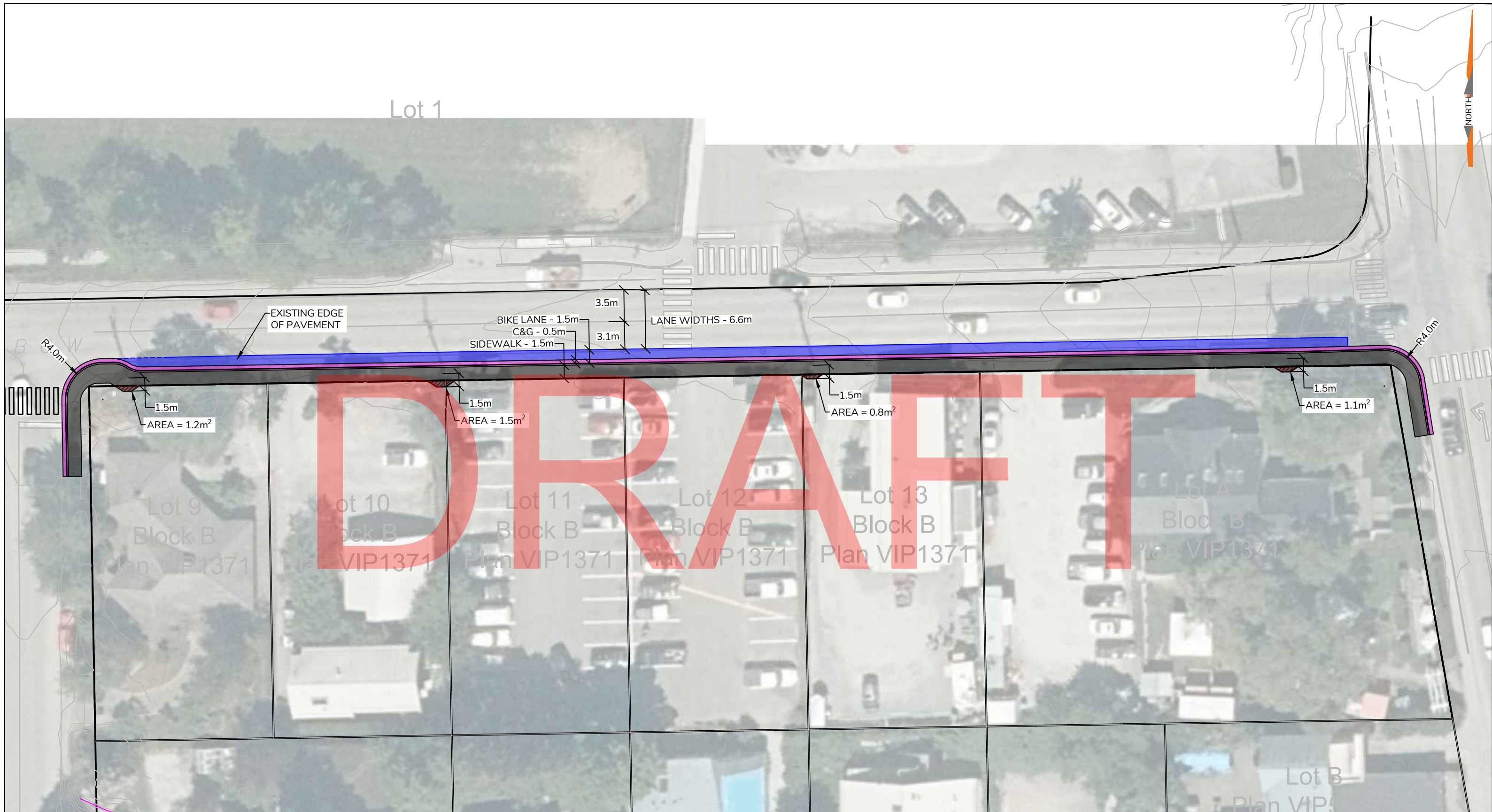


Appendix A – Location Map

Saltspring Island – Rainbow Road Pedestrian and Bike Path





LEGEND:

PERMIT TO PRACTICE:
 THESE DESIGN DOCUMENTS ARE PREPARED SOLELY FOR THE USE BY THE PARTY WITH WHOM THE DESIGN PROFESSIONAL HAS ENTERED INTO A CONTRACT, AND THERE ARE NO REPRESENTATIONS OF ANY KIND MADE BY THE DESIGN PROFESSIONAL TO ANY PARTY WITH WHOM THE DESIGN PROFESSIONAL HAS NOT ENTERED INTO CONTRACT.

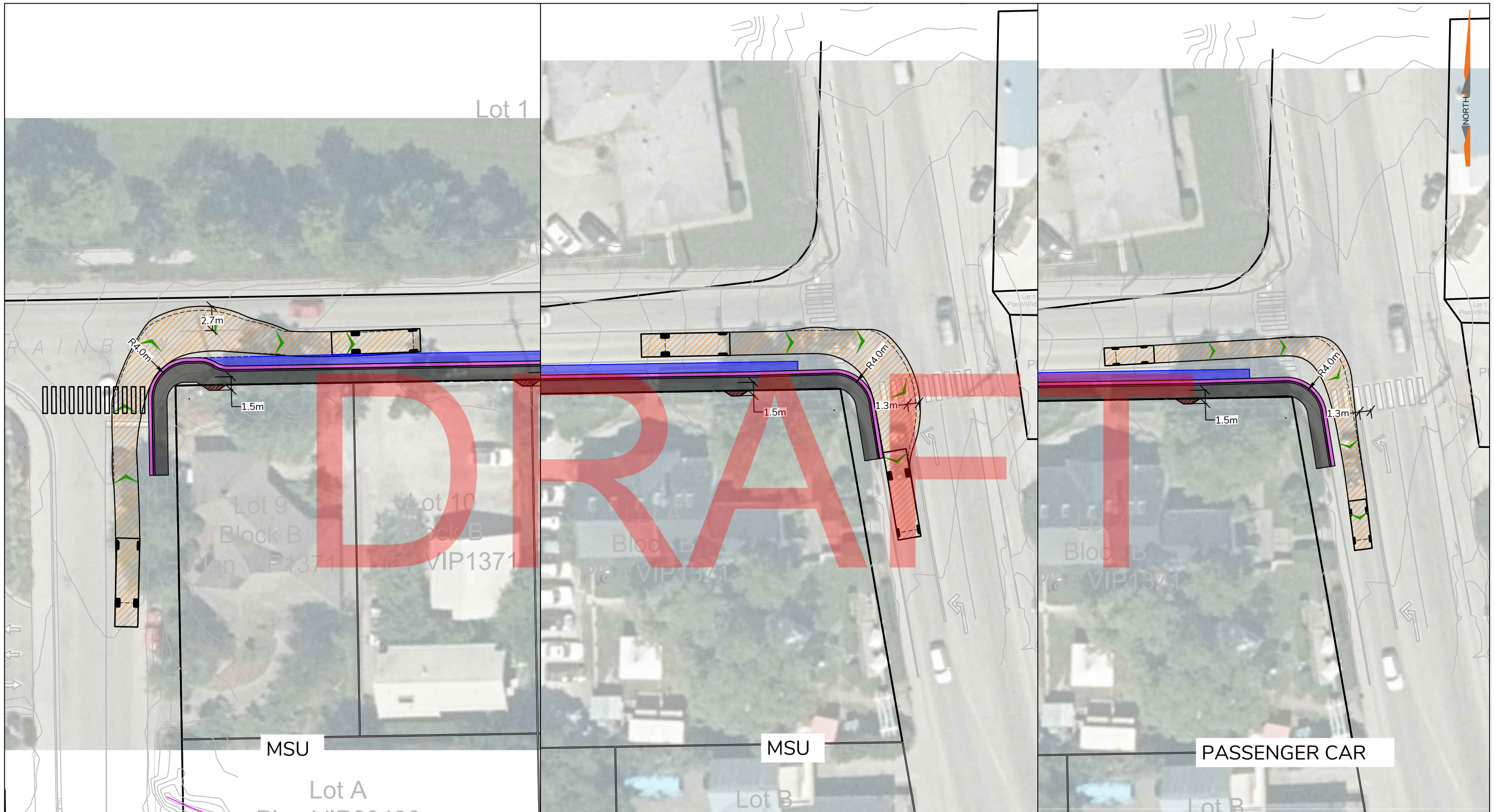
SEAL:

REVISIONS		
0	ISSUED FOR REVIEW	2024-08-26
1	ISSUED FOR REVIEW	2024-09-06
2		
3		
4		
5		
6		
7		

**RAINBOW ROAD ACTIVE TRANSPORTATION UPGRADES
 PROPOSED SIDEWALK WIDTHS
 1.5m SIDEWALK, 1.5m BIKE LANE**

DRAWING NO: DD-01-R1_1.5M OPTION	SCALE: 1:400	DRAWN: CK
DESIGN SPEED: -	DESIGN VEHICLE: -	CHECKED: AK

WATT
 Consulting Group
WATTCONSULTINGGROUP.COM
 PROJECT NO: 3810.B01



LEGEND:

PERMIT TO PRACTICE:
 THESE DESIGN DOCUMENTS ARE PREPARED SOLELY FOR THE USE BY THE PARTY WITH WHOM THE DESIGN PROFESSIONAL HAS ENTERED INTO A CONTRACT, AND THERE ARE NO REPRESENTATIONS OF ANY KIND MADE BY THE DESIGN PROFESSIONAL TO ANY PARTY WITH WHOM THE DESIGN PROFESSIONAL HAS NOT ENTERED INTO CONTRACT.

SEAL:

REVISIONS		
0	ISSUED FOR REVIEW	2024-08-26
1	ISSUED FOR REVIEW	2024-09-06
2		
3		
4		
5		
6		
7		

RAINBOW ROAD ACTIVE TRANSPORTATION UPGRADES PROPOED SIDEWALK WIDTHS SWEEP PATH ANALYSIS FOR CORNER RADII		
DRAWING NO: DD-04-R1_SPA	SCALE: 1-400	DRAWN: CK
DESIGN SPEED: -	DESIGN VEHICLE: -	CHECKED: AK

WATT
 Consulting Group
 WATTCONSULTINGGROUP.COM
 PROJECT NO: 3810.B01