



# Cross Connection Control Program

Presentation to the Water Advisory Committee

April 14, 2026

# Introduction

- **Program Role:** The CRD Cross Connection Control Program (CCC) supports the Greater Victoria Drinking Water System's multi barrier approach to delivering safe, sustainable drinking water.
- **Mandate:** Identify, eliminate, and prevent cross connections within the Greater Victoria Drinking Water System.
- **Authority & Recognition:** Established under the *BC Drinking Water Protection Act* and authorized by *CRD Bylaw No. 3516* (June 2008); recipient of the BCWWA Excellence & Innovation Water & Waste Industry Award (2025).

# Cross Connection Control (CCC)

## Program

- Protecting Public Drinking Water

## Resources

- 4.6 Full Time Equivalent Staff

## 2026 Budget

- \$872,762

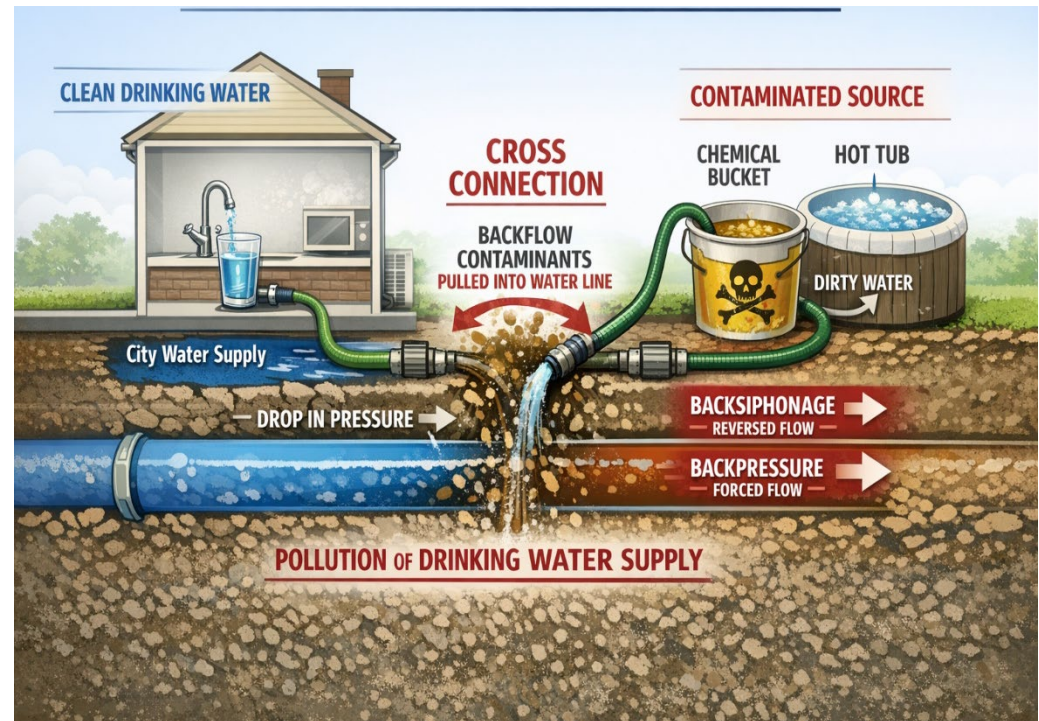
# What is a Cross Connection?

What is a  
Cross  
Connection?

Cross Connection means an actual or potential connection between the Drinking Water System and a non-potable substance that can put the potable water at risk.

# Cross Connection Examples

- Fire sprinkler
- Boilers
- Restaurant equipment
- Medical Equipment
- Water trucks
- Lawn irrigation



# Testable Backflow Assemblies



Reduced Pressure Backflow Prevention Assembly (RP)



Double check valve assembly (DC)



Pressure Vacuum Breaker Assembly (PVB)



Spill-Resistant Pressure Vacuum Breaker Assembly (SVB)

# Non-Testable Backflow Assemblies

**Dual Check Valve**



**Hose Bibb VB**



**Vacuum Breaker**



**Vacuum Breaker**



# Program Strategy

- Regulations
- Inspections
- Testing
- Education
- Data Management



# Program Strategy – Regulations



CAPITAL REGIONAL DISTRICT  
BYLAW NO. 3516

*Capital Regional District  
Cross Connection Control Bylaw No. 1, 2008,*

*A Bylaw to Protect Public Health by Controlling Cross Connections  
in the Greater Victoria Drinking Water Supply System*

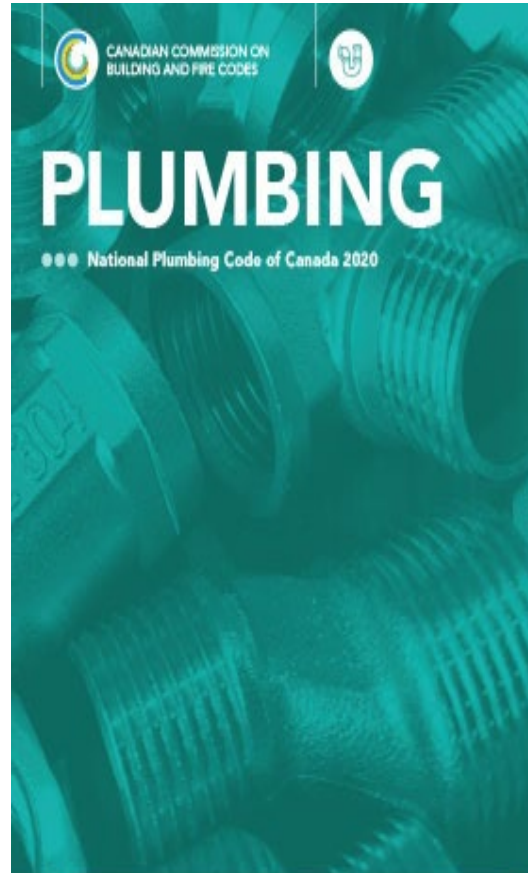
For technical enquiries regarding this Bylaw, please contact:

Scott Armour  
Cross Connection Control Officer  
Water Quality Division  
Water Services Department  
Capital Regional District  
479 Island Highway  
Victoria, BC V9B 1H7  
T 250.474.9553  
F 250.474.9672

For reference to original Bylaw and amendments, or for further details,  
please contact CRD Water Services, 479 Island Highway, Victoria, BC, V9B 1H7

T 250.474.9600 F 250.474.4012  
Website: [www.crd.bc.ca](http://www.crd.bc.ca)

HDM1541764



CSA B64.10:23/CSA B64.10.1:23  
National Standard of Canada



**Selection and installation of backflow  
preventers/Maintenance and field testing  
of backflow preventers**



# Program Strategy - Inspections

- Investigate actual or potential cross connections
- Register backflow assemblies
- Monitor the required device testing
- Investigate backflow incidents
- Complete annual audit program



# Program Strategy - Testing

- 32,000 - Registered assemblies
- 22,000 – Annual tests
- 10,000 – Triennial tests i.e., Single Family Home Irrigation
- BCWWA Qualified Testers (300 individuals)



# Program Strategy - Education

- Outreach
- Annual Inspectors Roundtable
- Stakeholder presentations
- Special interest Group Presentations
- Formal Training Programs



# Program Strategies – Data Management

- Online Database (CRIMS)
- Public Portal (paperless)



(Build Date: 2025-10-15 02:41:19 PM) 2025.3.10.26986

**Tracks inspections for various CRD sites**

Capital Regional District (CRD)

Copyright © CRD 2025

Capital Regional District

Facility Information

Facility	Testing Required	Installed Devices
[#21869] - CRD TEST FACILITY 6 - Bob	Yes	9/15 <b>not Assigned for Testing</b>
[#87728] - Bob Test Facility - CRD Testing process only		0/0 Assigned for Testing
[#84136] - CRD TEST FACILITY 3 - Bob		0/0 Assigned for Testing

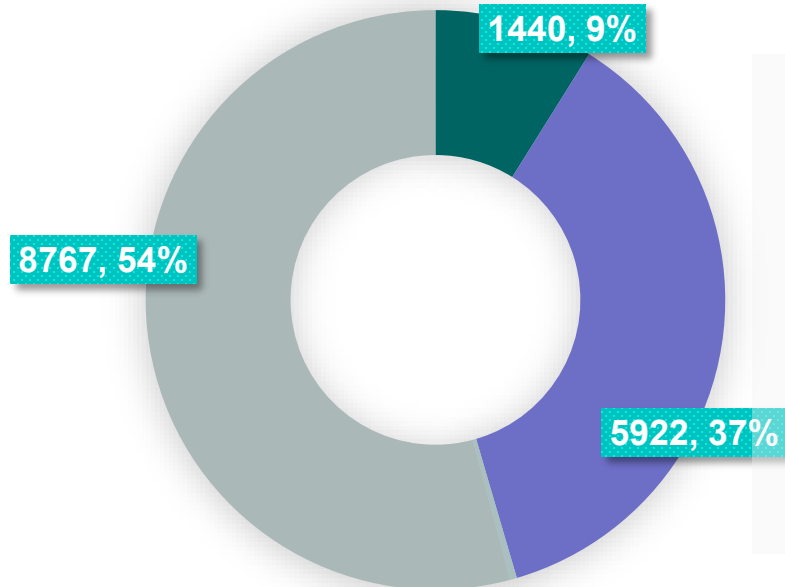
1 - 3 of 3 items

Log out

# Audits – Facilities



## FACILITIES BY HAZARD LEVEL



- Severe - Commercial 1440
- Moderate - Commercial 5922
- Moderate - Residential 8767

# Program Strategy 2026/2027 Projects



Paperless Program



Development of new  
CRIMS Portal



Bylaw No. 3516 Revision  
2026/2027



Backflow Simulation  
Model

# Summary



**Protecting the Public Drinking  
Water One Connection at a time.**

# Questions & Feedback

- How is the Cross-Connection Control program perceived by WAC and/or public?
- Does a broad risk-based approach continue to make sense? Should the program reduce its focus on low risk (e.g., residential sprinklers) and dedicate more resources to high-risk sector oversight?
- Any suggestions for reaching out and promoting the program to the public or specific sectors?

A large graphic consisting of two overlapping rounded rectangles. The top-left rectangle is dark teal, and the bottom-right rectangle is light teal. The text 'Thank you' is centered in the light teal area.

**Thank you**