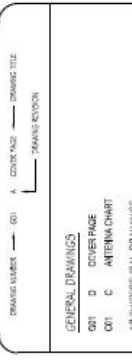



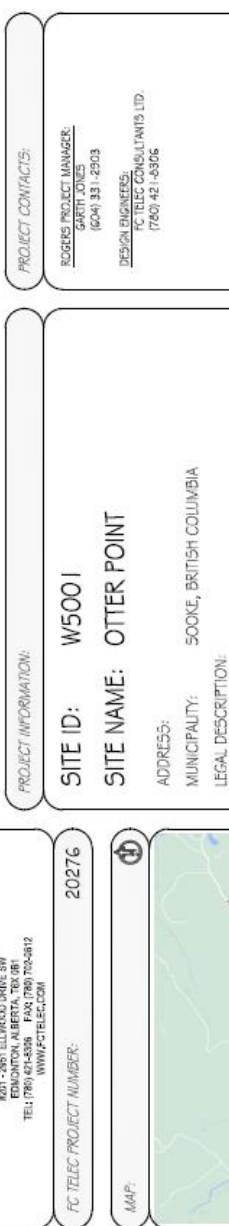


Appendix B: Development Proposal

<p><b>DRAWINGS PRODUCED BY:</b></p>  <p>FC TELECOM CONSULTANTS 1001-7951 ELMWOOD DRIVE SW VANCOUVER, BC V6X 4R9 TEL: (778) 421-8336 FAX: (778) 724-0812 WWW.FCTELECOM.COM</p>	<p><b>CLIENT:</b></p> 	<p><b>DRAWING LIST:</b></p> <p>DRAWING NUMBER: GO1    COVER PAGE    DRAWING TITLE</p> <p>REVISION</p> <p><b>GENERAL DRAWINGS</b></p> <p>GO1 D COVER PAGE</p> <p>GO1 C ANTENNA CHART</p> <p><b>ARCHITECTURAL DRAWINGS</b></p> <p>A01 A KEY PLAN</p> <p>A02 B LOCATION PLAN</p> <p>A03 D SITE PLAN</p> <p>A04 C COMPOUND PLAN</p> <p>A05 C SOUTHEAST &amp; SOUTHWEST COMPOUND TOWER ELEVATIONS</p> <p>A06 C COMPOUND ISOMETRIC</p>	<p><b>PROJECT CONTACTS:</b></p> <p><b>ROGERS PROJECT MANAGER:</b> GARRETT JONES (604) 931-14203</p> <p><b>DESIGN ENGINEERS:</b> FC TELECOM CONSULTANTS LTD. (778) 421-8336</p>	<p><b>PROJECT INFORMATION:</b></p> <p><b>SITE ID:</b> W5001</p> <p><b>SITE NAME:</b> OTTER POINT</p> <p><b>ADDRESS:</b> SOOKE, BRITISH COLUMBIA</p> <p><b>MUNICIPALITY:</b> SOOKE, BRITISH COLUMBIA</p> <p><b>LEGAL DESCRIPTION:</b></p> <p><b>SITE COORDINATES:</b> LATITUDE 48° 22' 44.4" N LONGITUDE -123° 49' 23.2" W</p> <p><b>INSTALLATION:</b> WALK-IN CABINET</p> <p><b>CONFIGURATION:</b> 45.0m LATTICE TRI-POLE</p> <p><b>RE-ISSUED FOR: PRELIMINARY REVIEW</b></p> <p><b>DATE:</b> APRIL 26 2021</p>	<p><b>BRITISH COLUMBIA KEY MAP:</b></p> 	<p><b>APPROVALS:</b></p>	<p><b>REVISIONS:</b></p> <table border="1"> <thead> <tr> <th>REV.</th> <th>DESCRIPTION</th> <th>DATE</th> <th>BY</th> </tr> </thead> <tbody> <tr> <td>D</td> <td>RE-ISSUED FOR PRELIMINARY REVIEW</td> <td>26 APR 21</td> <td>S.A.</td> </tr> <tr> <td>C</td> <td>RE-ISSUED FOR PRELIMINARY REVIEW</td> <td>01 APR 21</td> <td>N.M.</td> </tr> <tr> <td>B</td> <td>RE-ISSUED FOR PRELIMINARY REVIEW</td> <td>03 MAR 21</td> <td>S.A.</td> </tr> <tr> <td>A</td> <td>ISSUED FOR PRELIMINARY REVIEW</td> <td>05 FEB 21</td> <td>S.A.</td> </tr> </tbody> </table>	REV.	DESCRIPTION	DATE	BY	D	RE-ISSUED FOR PRELIMINARY REVIEW	26 APR 21	S.A.	C	RE-ISSUED FOR PRELIMINARY REVIEW	01 APR 21	N.M.	B	RE-ISSUED FOR PRELIMINARY REVIEW	03 MAR 21	S.A.	A	ISSUED FOR PRELIMINARY REVIEW	05 FEB 21	S.A.	<p><b>DRAWING NUMBER:</b> GO1</p>	<p><b>MAP:</b></p> 	<p><b>SATELLITE IMAGE:</b></p> 
REV.	DESCRIPTION	DATE	BY																											
D	RE-ISSUED FOR PRELIMINARY REVIEW	26 APR 21	S.A.																											
C	RE-ISSUED FOR PRELIMINARY REVIEW	01 APR 21	N.M.																											
B	RE-ISSUED FOR PRELIMINARY REVIEW	03 MAR 21	S.A.																											
A	ISSUED FOR PRELIMINARY REVIEW	05 FEB 21	S.A.																											

RADIO ANTENNA LIST													
ANT. POS. NO.	CARRIER	ANTENNA ID	STATUS	ANTENNA HEIGHT (CENTER OF ANTENNA)	ANTENNA MOUNT	ANTENNA TYPE	# RRUs (E), (N), (R)	MDT (°)	MAIN LEAD TYPE	JUMPER TYPE (m)	ANT. AZ. (°)	SECTOR NO.	NOTES
1	CREST	N/A	NEW	44.0m A.G.L	NEW	SU2720-HF2P250M	-	-	POWER + RIBER	64	-	N/A	
2	ROGERS	LIE	NEW	44.0m A.G.L	NEW	T126027N1D1B1F1T2A03	-	0	POWER + RIBER	60	-	40°	1
3	ROGERS	LIE	FUTURE	44.0m A.G.L	NEW	AR6446/AR332	-	0	POWER + RIBER	60	-	40°	1
4	ROGERS	LIE OFFSET	NEW	44.0m A.G.L	NEW	T126027N1D1B1F1T2A03	-	0	POWER + RIBER	60	-	100°	0
5	ROGERS	LIE	NEW	44.0m A.G.L	NEW	T126027N1D1B1F1T2A03	-	0	POWER + RIBER	60	-	160°	2
6	ROGERS	LIE	FUTURE	44.0m A.G.L	NEW	AR6446/AR332	-	0	POWER + RIBER	60	-	160°	2
7	ROGERS	LIE OFFSET	NEW	44.0m A.G.L	NEW	T126027N1D1B1F1T2A03	-	0	POWER + RIBER	60	-	220°	£
8	ROGERS	LIE	NEW	44.0m A.G.L	NEW	T126027N1D1B1F1T2A03	-	0	POWER + RIBER	60	-	280°	3
9	ROGERS	LIE	FUTURE	44.0m A.G.L	NEW	AR6446/AR332	-	0	POWER + RIBER	60	-	280°	3
10	ROGERS	LIE OFFSET	NEW	44.0m A.G.L	NEW	T126027N1D1B1F1T2A03	-	0	POWER + RIBER	60	-	340°	F
11	ROGERS	GPS	NEW	10.0m A.G.L	NEW	KRE013365/2	-	-	POWER + RIBER	23	-	N/A	N/A
12-14	ROGERS	AWS	FUTURE	41.0m A.G.L	FUTURE	TBD	-	TBD	TBD	54	-	TBD	TBD
15-17	ROGERS	3.5GHz	FUTURE	36.0m A.G.L	FUTURE	TBD	-	TBD	TBD	51	-	TBD	TBD
18-21	ROGERS	2.5GHz	FUTURE	35.0m A.G.L	FUTURE	TBD	-	TBD	TBD	46	-	TBD	TBD

MICROWAVE TRANSMISSION LIST													
ANT. POS. NO.	CARRIER	ANTENNA ID	STATUS	ANTENNA HEIGHT (CENTER OF ANTENNA)	ANTENNA MOUNT	ANTENNA TYPE	# RRUs (E), (N), (R)	MDT (°)	MAIN LEAD TYPE	JUMPER TYPE (m)	ANT. AZ. (°)	SECTOR NO.	NOTES
22	ROGERS	M/W	NEW	TBD	NEW	TBD	-	-	TBD	TBD	-	-	
23	CREST	M/W	NEW	TBD	NEW	WHP4-15	-	-	TBD	TBD	-	-	
24	CREST	M/W	NEW	TBD	NEW	WHP4-15	-	-	TBD	TBD	-	-	

NOTES:  
 1. ALL ANTENNA SPECIFICATIONS TO BE CONFORMED IN RADIO SITE QUANTIFICATION AS PRODUCED BY ROGERS.  
 2. ANTENNA CABLES AS SPECIFIED BY ROGERS CIVIL SUBMISSION.  
 3. ALL ANTENNA DIMENSIONS ARE DETERMINED FROM TRIPLE NORTH.  
 4. ANTENNA CABLE LENGTHS HAVE BEEN MEASURED FROM THE POINT TO EACH ANTENNA.  
 5. ALL DIMENSIONS ARE TO BE MEASURED WITHIN 3.0m OF ANTENNA DIBED BEHIND OR BELOW ON THE SAME MOUNT IF POSSIBLE UNLESS OTHERWISE NOTED. (E)-EXISTING, (N)-NEW, (F)-FUTURE.  
 6. ALL CABLES SHALL BE 3000EFT.

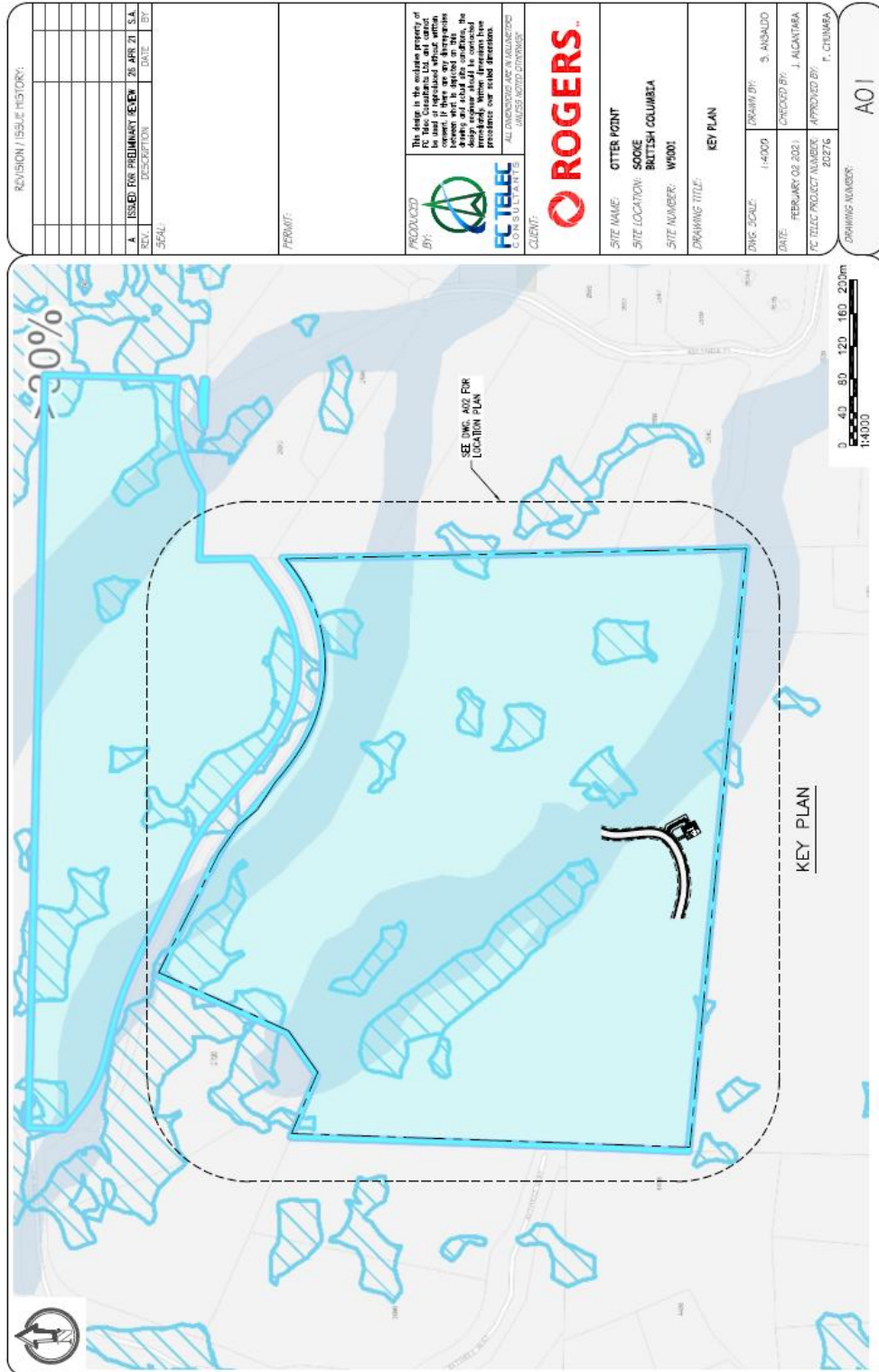
REVISION / ISSUE HISTORY:	
C	RE-ISSUED FOR PRIMARY REVIEW 27 APR 21 S.A.
B	RE-ISSUED FOR PRIMARY REVIEW 03 MAR 21 S.A.
A	ISSUED FOR PRIMARY REVIEW 05 FEB 21 S.A.
REV.	DESCRIPTION DATE BY

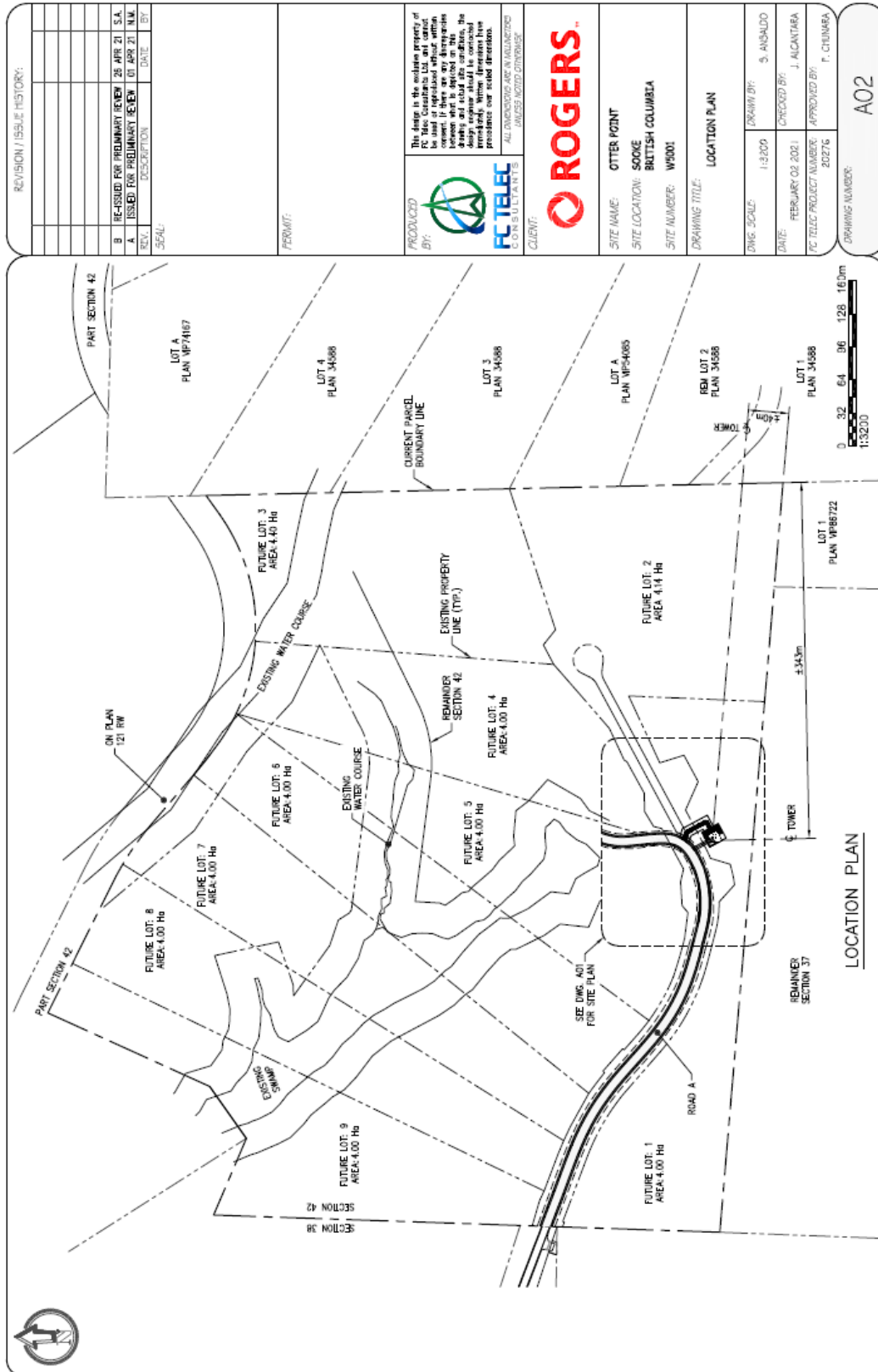
  

PERMIT:	
PRODUCED BY:	FC TELECOM INC. ALL INFORMATION AND INFORMATION IS SUBJECT TO CHANGE WITHOUT NOTICE.
CLIENT:	ROGERS

SITE NAME:	
SITE LOCATION:	OTTAWA POINT
SITE NUMBER:	W5001
DRAWING TITLE:	ANTENNA CHART
DWG. SCALE:	NO SCALE
DATE:	FEBRUARY 02 2021
FC TELCO PROJECT NUMBER:	202716
DRAWING NUMBER:	001





REVISION / ISSUE HISTORY:			
REV.	DESCRIPTION	DATE	BY
B	RE-ISSUED FOR PRIMARY REVIEW	26 APR 21	S.A.
A	ISSUED FOR PRIMARY REVIEW	01 APR 21	N.M.

SCALE:

PERMIT:

PRODUCED BY: **FC TELECOM**  
ALL DIMENSIONS ARE IN MILLIMETERS UNLESS NOTED OTHERWISE

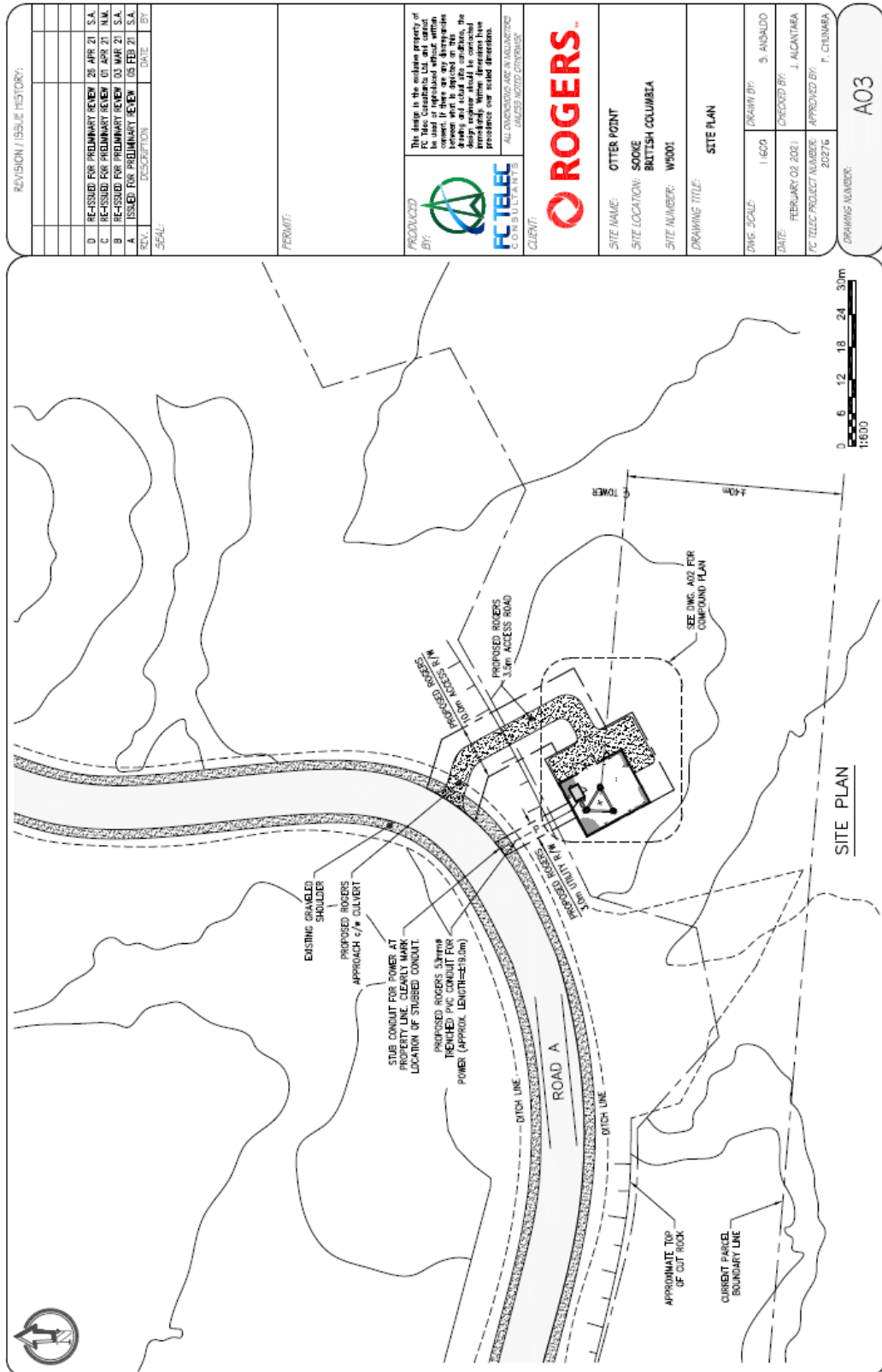
CLIENT: **ROGERS**

SITE NAME: OTTER POINT  
 SITE LOCATION: SCOOKE BRITISH COLUMBIA  
 SITE NUMBER: W5001

DRAWING TITLE: LOCATION PLAN

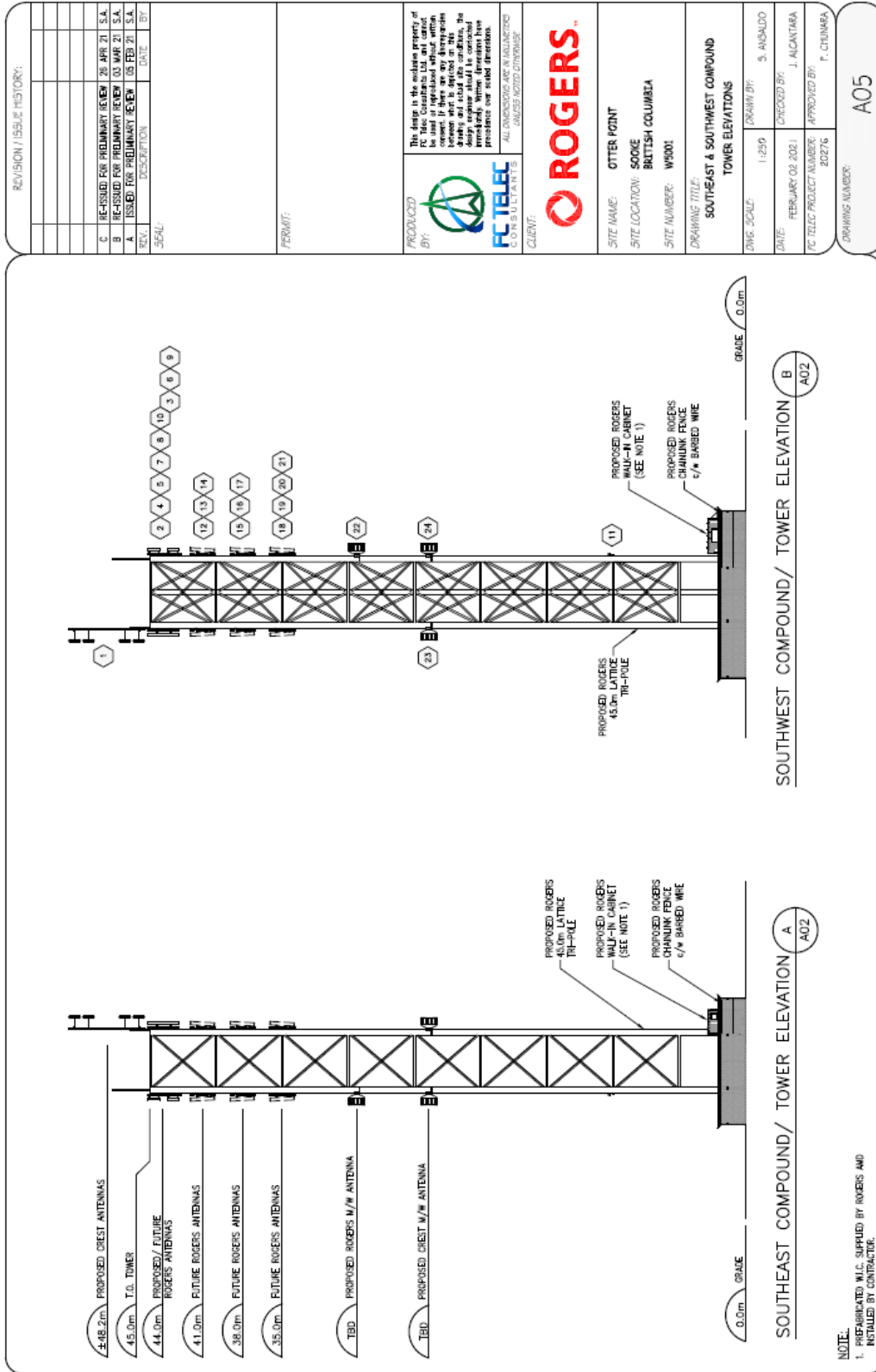
DWG. SCALE: 1:3200 DRAWN BY: S. ANDALDO  
 DATE: FEBRUARY 02 2021 CHECKED BY: J. ALCANTARA  
 FC TELECOM PROJECT NUMBER: 20216 APPROVED BY: F. CHENBERA

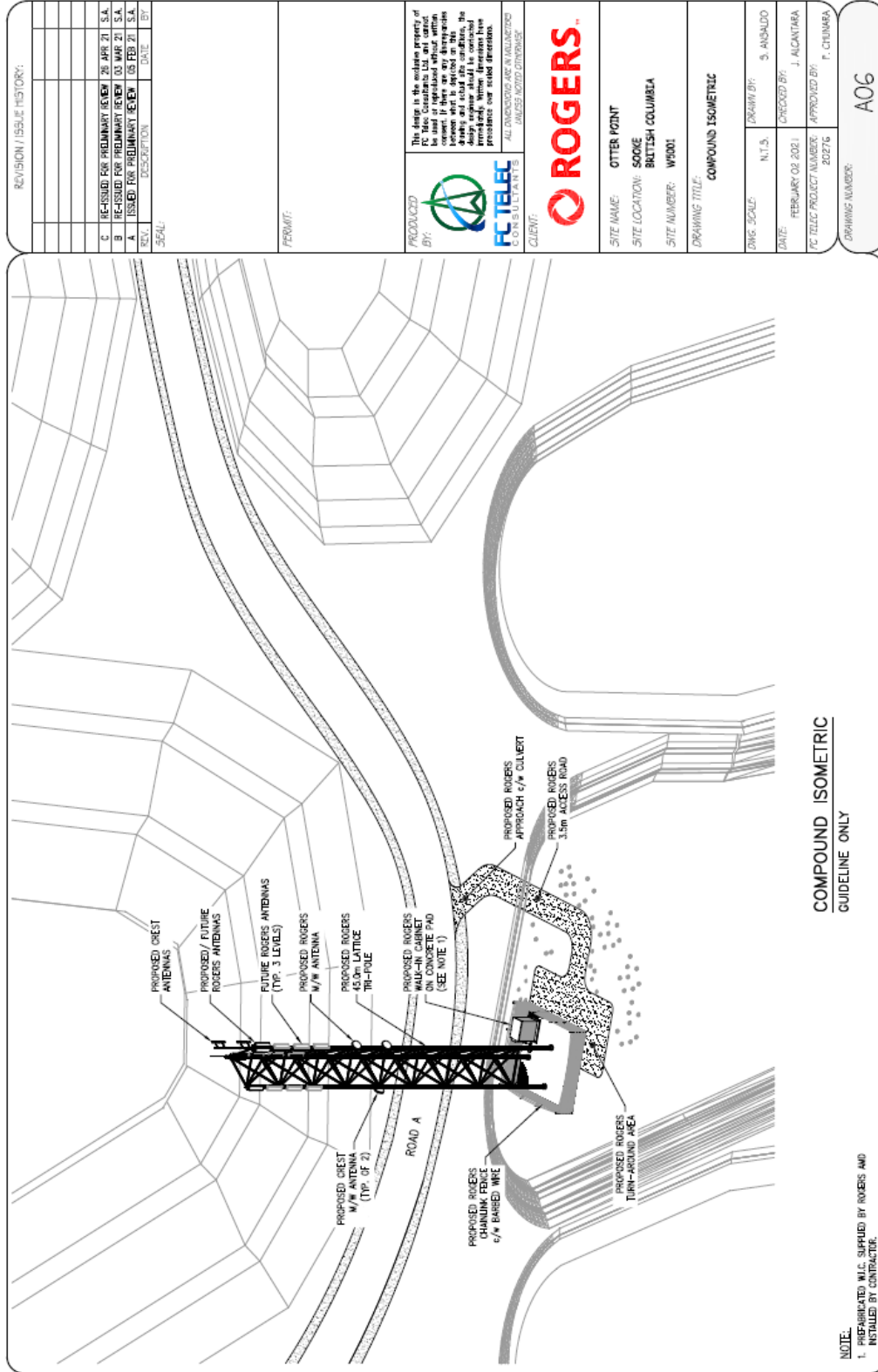
DRAWING NUMBER: **A02**











REVISION / ISSUE HISTORY:

REV.	DESCRIPTION	DATE	BY
C	RE-ISSUED FOR PRIMARY REVIEW	26 APR 21	S.A.
B	RE-ISSUED FOR PRIMARY REVIEW	03 MAR 21	S.A.
A	ISSUED FOR PRIMARY REVIEW	08 FEB 21	S.A.

SCALE:

PERMIT:

PRODUCED BY: **ACTELEC**

The design is the exclusive property of ACTELEC, Creighton, Ltd. and cannot be used for any other project without the written consent of ACTELEC. It is the responsibility of the client to ensure that the design is used in accordance with the intended purpose and that all necessary permits and approvals are obtained. ACTELEC is not responsible for any errors or omissions in the design or for any consequences arising therefrom. ACTELEC is not responsible for any damage or injury to persons or property caused by the use of the design. ACTELEC is not responsible for any delay or expense that is incurred by the client in connection with the design or for any consequences arising therefrom. ACTELEC is not responsible for any damage or injury to persons or property caused by the use of the design.

ALL DIMENSIONS ARE IN MILLIMETERS UNLESS NOTED OTHERWISE

CLIENT: **ROGERS**

SITE NAME: OTTER POINT  
SITE LOCATION: SOOKE BRITISH COLUMBIA  
SITE NUMBER: W5001

DRAWING TITLE: COMPOUND ISOMETRIC

DWG. SCALE: N.T.S. DRAWN BY: S. ANSAUDO

DATE: FEBRUARY 03, 2021 CHECKED BY: J. ALCANTARA

PC TITLE PROJECT NUMBER: 202716 APPROVED BY: F. CHUNRA

DRAWING NUMBER: A06

COMPOUND ISOMETRIC  
GUIDELINE ONLY

NOTE:  
1. PREFABRICATED M.G. SUPPLIED BY ROGERS AND INSTALLED BY CONTRACTOR.