



Performing Arts Facilities Service

Scaling Up Support for Regional Theatres

2025 | CRD ARTS & CULTURE

How We Got Here: Consultant Report



There is consensus among regional leaders and arts and cultural interest holders that the status quo is no longer viable, and that steps must be taken to secure long-term support for the region's performing arts infrastructure.

Analysis of Service Options to Support Performing Arts Facilities
– Report prepared by Nordicity



CRD Board Direction



That staff draft an establishing bylaw and service plan for a new performing arts facilities service based on the primary recommendation of the Nordicity report, Option C, with the addition of the Southern Gulf Islands Electoral Area and provide these documents to the Select Committee for review.

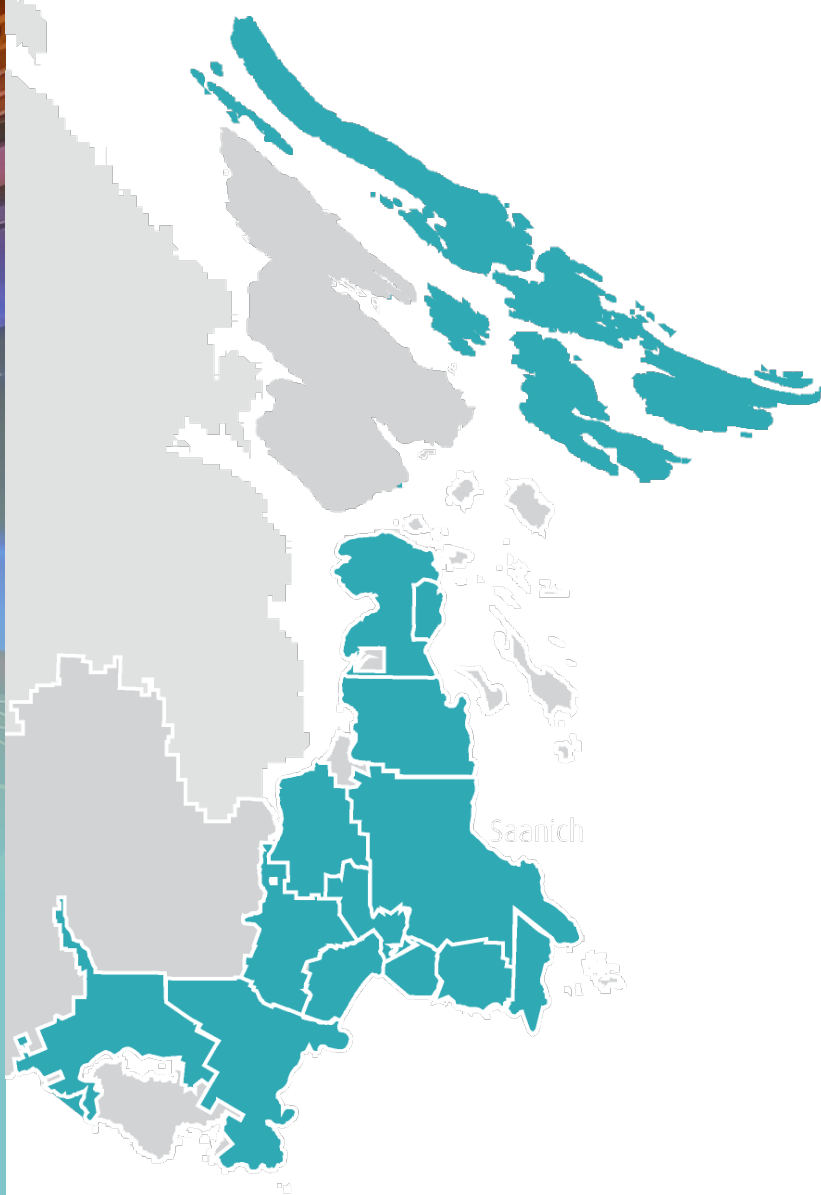
July 9th, 2025





PERFORMING ARTS FACILITIES SERVICE SCOPE

Above: Charlie White Theatre interior.
Photo from Mary Winspear Center website.



SERVICE TYPE

- › Sub-Regional

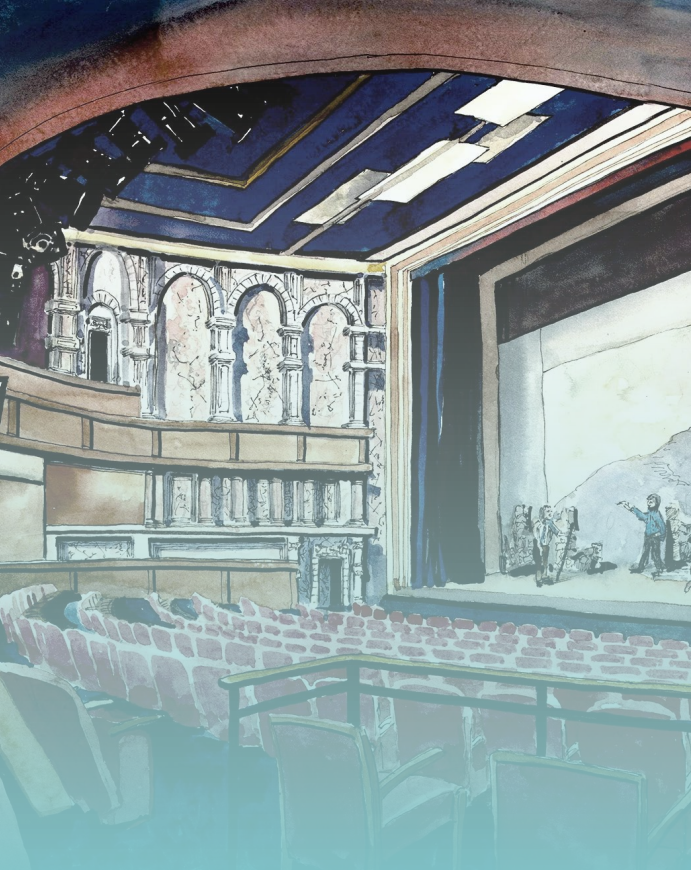
THEATRES

- › Charlie White
- › Royal Theatre
- › McPherson Playhouse

PARTICIPANTS

- › Central Saanich
- › Colwood
- › Esquimalt
- › Highlands
- › Langford
- › Metchosin
- › North Saanich
- › Oak Bay
- › Saanich
- › Sidney
- › Sooke
- › Victoria
- › View Royal
- › S. Gulf Islands

Service
area-wide
AAP
recommended



PERFORMING ARTS FACILITIES SERVICE FUNCTIONS

Above: JDF Performing Arts Centre (artist rendering). Photo from JDFPACS website.

PLAN

- › **Planning Grants Program** to support feasibility studies, consultations, business planning, and construction plans for performing arts facility development

DEVELOP

- › **Capital Funding** for capital improvements to current regional theatres (Royal, McPherson, Charlie White) and future regional theatre on the West Shore

FUND

- › **Operating Funding** to support ongoing operations of current regional theatres (Royal, McPherson, Charlie White) and future regional theatre on the West Shore
- › **Theatre Rental Grants** to help non-profit community presenters offset theatre rental costs

Establishing Bylaw No. 4704

- › Includes all functions and powers from Royal Theatre and McPherson Playhouse bylaws
- › Enables operating and capital funding for Charlie White Theatre and future regional theatre on the West Shore
- › Starting maximum requisition is the greater of \$3M or \$0.0171 per \$1,000 of value of the service area
- › Elector approval through service area-wide AAP

Right: Royal Theatre exterior, 2009. Photo courtesy of RMTS staff.



Service Plan

- › **2026:** bylaw adoption, governance review, final program design
- › **2027:** new service in budget process, grant programs launched, operating and capital funding for regional theatres expanded
- › **2028 onwards:** program review and continuous improvement

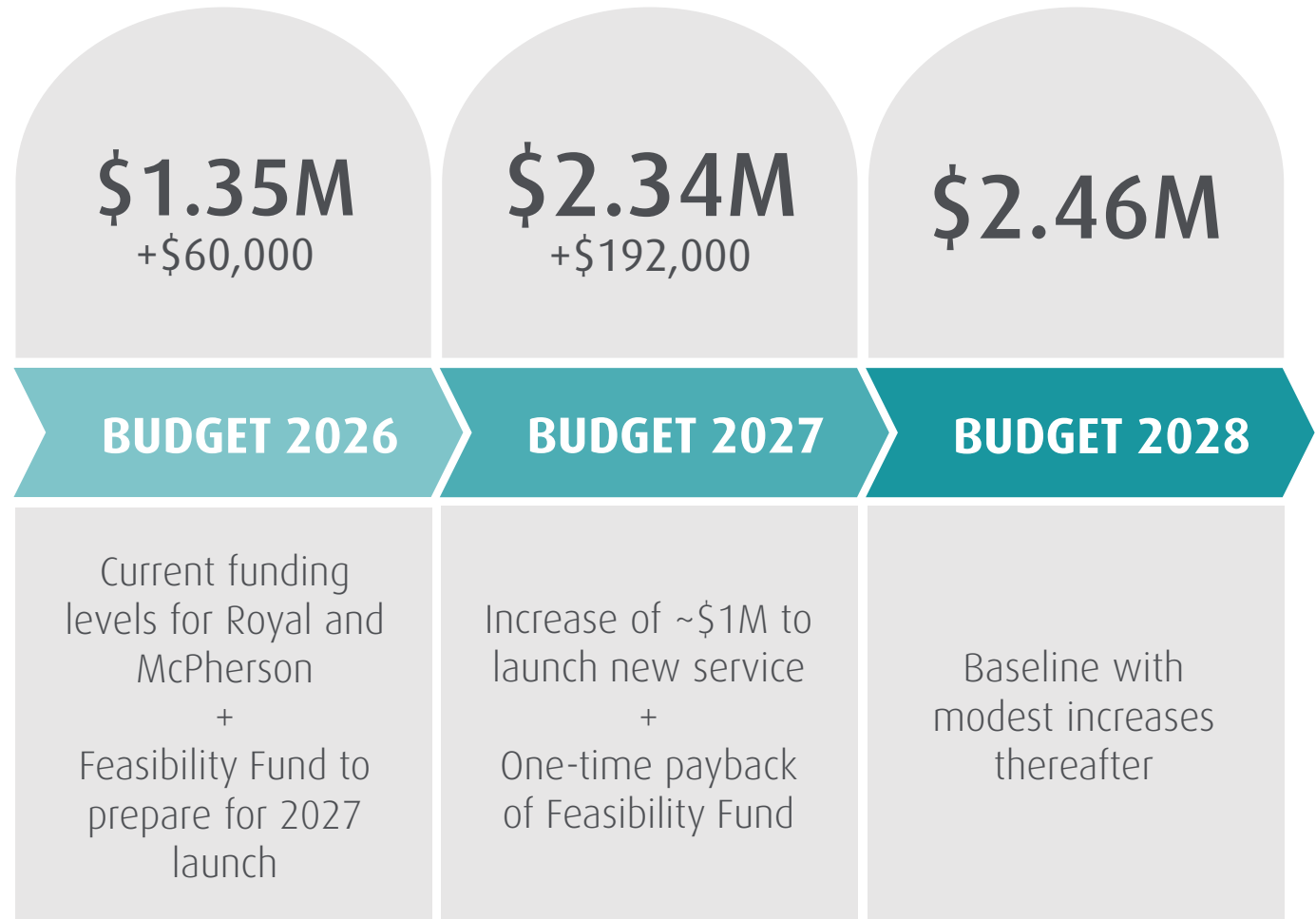
Right: McPherson Playhouse exterior, 2009. Photo Courtesy of RMTS staff.





PERFORMING ARTS FACILITIES SERVICE COST (requisition)

Above: Crowd at McPherson Playhouse,
2018. Photo Courtesy of RMTS staff.





PERFORMING ARTS FACILITIES SERVICE COST (requisition)

Above: Crowd at McPherson Playhouse,
2018. Photo Courtesy of RMTS staff.

COST ESTIMATE BY JURISDICTION

JURISDICTION	TOTAL COST	PER CAPITA	PER AVG RES ASST
Central Saanich	103,994	5.73	12.13
Colwood	108,966	4.92	12.65
Esquimalt	92,006	4.77	14.23
Highlands	14,741	5.63	14.30
Langford	290,668	4.98	11.52
Metchosin	27,299	5.12	15.80
North Saanich	88,315	6.62	14.94
Oak Bay	123,114	6.54	18.10
Saanich	651,209	5.19	14.05
Sidney	80,423	6.05	9.48
Sooke	80,135	4.68	10.83
Southern Gulf Islands	49,403	7.43	7.21
Victoria	566,078	5.50	11.74
View Royal	63,646	5.04	13.30
Juan de Fuca*	0	0	0
Salt Spring Island*	0	0	0
	\$2,340,000		

**not participating jurisdictions in the proposed service*

Next Steps

