



2-year warranty
Financing Available



Combo Evoke Elevator

Snack-Evoke 5



Coffee-Evoke



Frozen food-Alpine

SNACK

Mercato

Mercato 3000: 3 wide, 6 trays = **\$7,590**

Mercato 4000: 4 wide 6 trays = **\$8,299**

Mercato 5000: 5 wide 6 trays = **\$8,699**

Evoke

Evoke 5: 5 wide, 6 trays = **\$8,999**

Evoke 6: 6 wide, 6 trays = ~~\$9,090~~ **\$8,599 SALE**

COMBO

Evoke ST/VT 5: **\$11,599**

Evoke ST/VT 5: (outdoor) **\$12,999**

Evoke Elevator: **\$13,299** soft elevator delivery

Evoke ST/VT 3: **\$10,299** (slim 29.5"W x 38"D x 72"H)

Evoke: Coffee Machine: Starting at **\$12,950**

Alpine Frozen Food: **\$14,299**

Evoke 10 Pop: **\$8,599**

[*USI Product Guide Link](#)



2-year warranty
Financing Available



Pop-Evoke 10

Snack-Evoke 6

Combo-Evoke

Combo-Evoke3

New
Machines

- Professional large capacity vending machines
- Height adjustable shelves
- Customizable trays. Dual coils for better flexibility
- Guaranteed Vend Technology
- Energy Efficient
- **Coin mech, Bill Acceptor & Card Reader/tap extra**
- Seamless Payment system integration
- Contactless Payment / Card Reader compatible. Accepts all well-known global and local payment providers.
- Telemetry with sales figures available with card reader.

Prices on machine only, Payment Systems and delivery/shipping extra. WE SHIP ACROSS CANADA

Ph: 1-800-334-6289 email: info@redsealvending.ca website: www.redsealvending.ca

<https://thehustle.co/the-economics-of-vending-machines/>



1-year
warranty



Combo Envision ENV5C: \$12,199

- 5 wide, 5 trays
- 36 selections, 371 items
- 96 beverages, 110 snacks, 165 Candy
- 4.3" LCD color display, LED lights
- 39" w x 37" d x 72" H, 720 lbs

Combo Quick Break Combo \$7,999

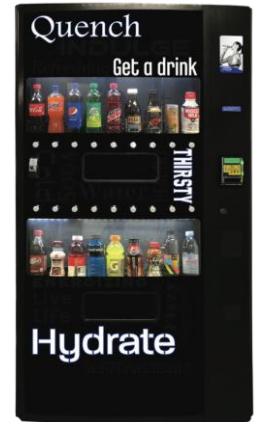
- Great for locations with limited space
- 21 snack selections, 217 total
- 8 drink selections, 97 cans and bottles
- Guaranteed delivery system (beverage system only)
- 34" w x 29" d x 72" h, 720 lbs, 115 v, 60 hz

New
Machines

- Professional large capacity vending machines
- Height adjustable shelves
- Customizable trays. Dual coils for better flexibility
- Guaranteed Vend Technology
- Energy Efficient

- **Coin mech, Card Reader & bill acceptor extra**
- Seamless Payment system integration
- Contactless Payment / Card Reader compatible.
- Compressors Energy Efficient R-290 Refrigerant with insulated cabinet

1-year
warranty



Snack Envision ENV5S: \$9,199

- 5 wide snack, 6 trays
- 40 selections, 550 items
- 330 candy, 220 chips/pastry
- 4.3" LCD color display, LED lights
- 39" w x 37" d x 72" H, 527 lbs

Snack Envision ENV4S: \$8,399

- 4 wide snack, 6 trays
- 32 Selections, 468 items
- 288 Candy, 180 chips/pastry
- 4.3" LCD color display, LED lights
- 35" w x 37" d x 72" H, 520 lbs

Beverage Envision ENV5B: \$12,299

- 40 selections, 240 items
- Holds 8.3 oz cans to 20 oz bottles
- 4.3" LCD color display, LED lights.
- 115 VAC, 60 Hz
- 39" w x 36" d x 72" H, 720 lbs

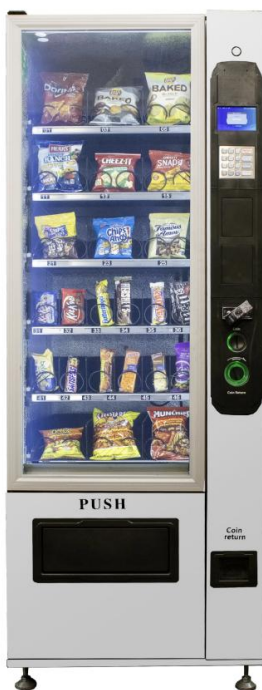
Beverage Prosper: \$9,999

- 18 selections, 300 product capacity
- Dispensing, vending glass bottles, square PET bottles and slim cans.
- easy to fill stack vendor.
- 4.3" LCD color display, LED lights.
- 115 VAC, 60 Hz
- 39" w x 36" d x 72" H, 720 lbs

Prices on machine only, Payment Systems and delivery/shipping extra. WE SHIP ACROSS CANADA

Ph: 1-800-334-6289 email: info@redsealvending.ca website: www.redsealvending.ca
<https://thehustle.co/the-economics-of-vending-machines/>

Snacks



Snack VC 7206-5S :

3 wide \$7,299 5 wide \$7,999

- 3 wide, 6 trays
- 24 Selections, 288 items
- 172 candy, 116 chip
- D 33.46" x W 28.74" x H 76.38", 451 lbs

Drinks



Drinks VC 7206-5D

\$8,399

- 3 wide, 6 trays
- 36 Selections, 180 Beverages
- D 33.46" x W 28.74" x H 76.38", 496 lbs

Food



Food VC 7206-5F

\$8,399

- 3 wide, 6 trays
- 24 selections, 288 items
- 172 small items, 116 larger items
- D 33.46" x W 28.74" x H 76.38", 496 lbs

Combo



Combo VC 7206-5C

\$8,599

- 3 wide, 6 trays
- Snack: 12 Selections, 58 Chip/Pastry items (6 Selections), 82 Candy items (6 Selections)
- Drinks: 18 selections, 90 Beverage items
- D 33.46" x W 28.74" x H 76.38", 496 lbs

SNACK - DRINK - FOOD - COMBO available in 4 wide, 5 wide, 6 wide TOUCH SCREEN MACHINES AVAILABLE UPON REQUEST

New Machines

- Professional large capacity vending machines
- Height adjustable shelves
- Customizable trays. Dual coils for better flexibility
- Guaranteed Vend Technology
- Energy Efficient
- Coin Mech, Card Reader & Bill Acceptor extra
- Seamless Payment system integration
- Contactless Payment / Card Reader compatible.
- Compressors Energy Efficient R-290 Refrigerant with insulated cabinet

1-year warranty

Suggestions when starting out:

- Deal with a business that has been around for years and has a warranty on their machines.
- Budget, even with refurbished combo machines you will need about \$5,000 to start. This covers machines + payment systems (coin mech, bill validator and/or card reader) + your snack/pop product.

READ: <https://thehustle.co/the-economics-of-vending-machines/>

- Do your homework and look at the vending industry association websites, NAMA and CAMA
- Find accounts, typically no one does this for you -some business sell machines on site at an account due to factors like moving away, getting out of the vending business, etc.

Prices on machine only, Payment Systems and delivery/shipping extra. WE SHIP ACROSS CANADA

Ph: 1-800-334-6289 email: info@redsealvending.ca website: www.redsealvending.ca

<https://thehustle.co/the-economics-of-vending-machines/>

COMBO MACHINES

Combo Vending Machines hold both snacks & beverages.

Combo Machines are a great way to start in the vending business and fit in spaces that a separate pop and snack machines may not fit.



VCM Healthy Max Combo REFURBISHED

\$4499

- Compact, all-purpose unit. Most popular machine!
- 6 trays: 3 snack, 3 wide chips, 12 snack = 230 items
- 3 pop trays, 18 cold beverage selections
- MDB (accepts coins, bills, card reader)
- Guaranteed delivery system, Bright LED light
- 30" w x 33" d x 72" h, 600 lbs
- Exterior graphic wrap may be slightly scuffed on 'used' models (not on carbon fibre wrapped units)



SnakMart Combo **\$6,579**

- New Machine 1 year warranty
- Great for locations with limited space
- 16 snack selections, 168 item capacity
- 7 drink selections, 85 drink capacity
- Guaranteed delivery system (beverage system only)
- Energy efficient R-290 refrigerant
- 30" w x 29" d x 72" h, 450 lbs, 115 v, 60 hz
- [SnakMart Combo Vending Machine](#)

Prices on machine only. Prices may vary on models depending on condition of the machine.

Warranty: Refurbished units have a **4 month WARRANTY on motherboard and compressor parts**

Extras: Coin Mech \$399. Bill Acceptor \$499 and up, Card Reader (electronic payment) \$699 [Touchless Payment Specs](#)

MDB (ICP) MDB refers to connection technology for peripheral devices like credit card readers.

Training Extra. Delivery Extra. [WE SHIP ACROSS CANADA](#) Check out: [How to Start in the Vending Business!](#)



REFURBISHED SNACK MACHINES

Crane 147/148 **\$2,900**

- 5 wide and 40 selection, 6 trays
- MDB (payment devices extra)
- Black front
- 39" w x 33" d x 72" h. 625 lbs



Crane 158 Snack **\$3,200**

- 5 wide, 5 snack trays
- 3 snack trays @ 4 selections ea.
- 2 candy tray @ 8 selections ea
- MDB (payment devices extra)
- Card reader capable
- 35" w x 37" d x 72" h 470 lbs



AMS 39-640 Sensit 1 **\$2,990** 6 trays

AMS 39-640 Sensit 2 **\$3,100** 5 trays

- MDB /Sensit guaranteed vend
- Sensit 1 Cannot take card reader
- 40" w x 35.5" d x 72" h 650 lbs



AP LCM 1/Crane 167-168

\$3,500-\$4,459

- 5 wide, 6 trays
- 32 selections, single coil
- MDB (accepts coins, bills, not card reader)
- 33.5" w x 29" d x 72" h 550 lbs



AP LCM 2

\$3100-\$3800

- 4 wide, 6 snack trays with red wrap on front with smarties wrap on sides
- 4 wide, 5 trays blue, black or kitkat
- MDB (cannot accept card reader)
- 33.5" w x 35.5" d x 72" h 560 lbs



Seaga SP432

\$2,400-\$2700

- 4 wide, 6 snack trays
- 32 selections
- Capacity 435 items
- MDB (payment devices extra, (cannot accept card reader)
- 35" w x 37" d x 72" h 470 lbs



BEWARE BUYING A USED MACHINE WITHOUT A WARRANTY

Prices on machine only. Prices may vary on models depending on condition of the machine.

Warranty: Refurbished units have a **4 month WARRANTY on motherboard and compressor parts**

Extras: Coin Mech \$399. Bill Acceptor \$499 and up, Card Reader (electronic payment) \$699 Touchless Payment Specs

MDB (ICP) MDB refers to connection technology for peripheral devices like credit card readers.

Training Extra. Delivery Extra. WE SHIP ACROSS CANADA Check out: How to Start in the Vending Business!

Ph: 1-800-334-6289 email: info@redsealvending.ca website: www.redsealvending.ca



REFURBISHED POP MACHINES

Bubble Front' Stack Vendor & Glass Front Vending Machine

- Assorted models & fronts: Coke, Pepsi, Nestea, Gatorade, Powerade
- Avg dimensions: 36+"W x 35"D x 72"H, 650-750 lbs
- Average product selections: 8-10 for stack Vendors and 45 selections for glassfront machines
- MDB capable: Accepts bill and card reader **\$2,500 and up** (depending on age & usage) **Glassfront \$5,599**



BEWARE BUYING A USED MACHINE WITHOUT A WARRANTY

How much money a vending machine makes can vary depending on numerous factors. Taking these main factors into consideration will stand you in good stead to make a healthy profit from your machine.

- Location – placing a machine in a high or low traffic area will have a high impact on sales.
- Products – Placing the right product in the right area is key to a well-placed vending machine. i.e. healthy snacks and drinks or traditional snack items - depends on who the consumer is and what they will buy. Watch out for short expiry dates with some product.
- Pricing – you typically price products in relation to other vending machines in the area and enough that you make a profit on your products. Healthy snacks typically cost more and will need to be priced higher for profitability.
- Expenses – Taking stock rotation and costs into consideration as well as maintenance and running costs maintenance will. Placing fresh items with a short shelf life will have a great impact on both costs and refill times.

Good article: [HTTPS://WWW.THEBALANCESMB.COM/STARTING-A-VENDING-MACHINE-BUSINESS-4138408](https://www.thebalancesmb.com/starting-a-vending-machine-business-4138408)

Red Seal Vending Used/Refurbished Machines

- Thoroughly cleaned and inspected.
- Damaged parts replaced.
- Fully tested to ensure functionality & good working order.
- Can be Pre-configured and set up for pricing, (spacers, labels, etc).
- Sanded & repainted as needed (with durable paint formulation).

Prices on machine only. Prices may vary on models depending on condition of the machine.

Warranty: Refurbished units have a **4 month WARRANTY on motherboard and compressor parts**

Extras: Coin Mech \$399. Bill Acceptor \$499 and up, Card Reader (electronic payment) \$699 Touchless Payment Specs

MDB (ICP) MDB refers to connection technology for peripheral devices like credit card readers.

Training Extra. Delivery Extra. WE SHIP ACROSS CANADA Check out: How to Start in the Vending Business!

Ph: 1-800-334-6289 email: info@redsealvending.ca website: www.redsealvending.ca



COFFEE MACHINES

Vendors dream, hard working, dependable and brews a great cup of coffee.

Suited for medium to large high traffic locations. The Crane National fully refurbished coffee and hot beverage vending machines dispense a broad menu of premium fresh brew and specialty coffees and teas, and serve them just the way your customers like them. With a state-of-the-art brewing system and precise ingredient controls, they are ensured a high quality cup each and every time.

Dimensions: 72.0"H x 38"W x 30"D. 575 lbs. Power Supply: 115v, 60hz, 12 amps



Refurbished Crane 673 **\$4,789**

Features:

- Programmable dual cup or single and has every kind of specialty coffee the customer wants.
- Cup turret tilts forward for quick and easy loading. Electronic temperature control. Fully programmable electronic ingredient timing and water volume control
- Product canisters are easy to reach and slide out for cleaning. Flip-up lids make filling easy.
- Programmable bowl & brewer rinse cycles.
- Posi-Vend Guaranteed Delivery System.
- [How Crane 673 Works](#)

Hot Drink Selections:

- Fresh Brew Regular Coffee.
- Freeze Dried Tea.
- Hot Chocolate.
- Americano.
- Café Latte.
- Two Blended Drink Options
- Gourmet or Soup (Option)



NEW SLIM AND SLEEK VENDED COFFEE

NEW! The Geneva coffee vending machine offering cafe style coffee. The USI Geneva coffee and hot beverage vending machines offer a State-Of-The-Art brewing system to ensure a high quality consistent drink. Silver or black.

Dimensions: 72.0"H x 27.5"W x 28"D. 340 lbs. Power Supply: 115v, 60hz, 12 amps

Starting at \$12,950 2 yr warranty. [Evoke Coffee PDF.](#)

DRINK SELECTION	Freeze Dried Model Soluble FD Coffee	Fresh Brew Model Fresh Ground Coffee
Regular Coffee	•	•
Decaffeinated Coffee	•	•
Espresso	•	•
Cappuccino	•	•
Café Latte	•	•
Café Mocha	•	•
Hot Chocolate	•	•
Hot Tea	•	•
Specialty Cappuccino 1 - single mix	•	•
Specialty Cappuccino 2 - single mix	•	•
Hot Water	•	•

Prices on machine only. Prices may vary on models depending on condition of the machine.

Warranty: Refurbished units have a **4 month WARRANTY on motherboard and compressor parts**

Extras: Coin Mech \$399. Bill Acceptor \$499 and up, Card Reader (electronic payment) \$699 [Touchless Payment Specs](#)

MDB (ICP) MDB refers to connection technology for peripheral devices like credit card readers.

Training Extra. Delivery Extra. [WE SHIP ACROSS CANADA](#) Check out: [How to Start in the Vending Business!](#)

FRESH FOOD VENDING



Crane 431 **\$4,100**

- 431 utilizes a carousel design that rotates to display products in 9 rows.
- Each shelf has 4.5" height.
- Up to 54-216 selections, 108 standard.
- 72" H x 38" W 31.5" D
- Weight: 760 lbs

Crane 432 **\$5,299**

- 9 rows, rotating turret
- 54 - 225 selections depending on configuration.
- Each shelf 5" height
- 40" W 33" D x 72" H
- Weight: 680 lbs
- Dedicated 20 amp circuit

[Crane 432 Fresh Food Vending Video](#)



BEWARE BUYING A USED MACHINE WITHOUT A WARRANTY

Contactless Payment System for Vending - Touchscreen

- Accepts all well-known global and local payment providers. Consumers can pay with contact & contactless credit/debit cards with EMV certification, QR code payment apps, and bank & wallet apps.
- Sales Figures Easily available via online portal
- You will pay a Monthly fee with Card Reader Company (Nayax), plus a per transaction fee.
- [Touchless Payment specs.pdf](#) Price: **\$699**



SOCK FOOTAGE

[Toronto Fashion Scene](#)



CUSTOM VENDING MACHINES: New or Refurbished

Cannabis • Laundry • Apparel • Electronics • Beauty Products • Industrial Vending

Prices on machine only. Prices may vary on models depending on condition of the machine.

Warranty: Refurbished units have a **4 month WARRANTY on motherboard and compressor parts**

Extras: Coin Mech \$399. Bill Acceptor \$499 and up, Card Reader (electronic payment) \$699 [Touchless Payment Specs](#)
MDB (ICP) MDB refers to connection technology for peripheral devices like credit card readers.

Training Extra. Delivery Extra. [WE SHIP ACROSS CANADA](#) Check out: [How to Start in the Vending Business!](#)

Ph: 1-800-334-6289 email: info@redsealvending.ca website: www.redsealvending.ca