

An aerial photograph of a city, likely Seattle, with a teal color overlay. The city is densely packed with buildings and greenery, and a large body of water is visible on the right side. The text is centered over the image.

# 2025 Climate Action Progress Report

Environmental Services Committee

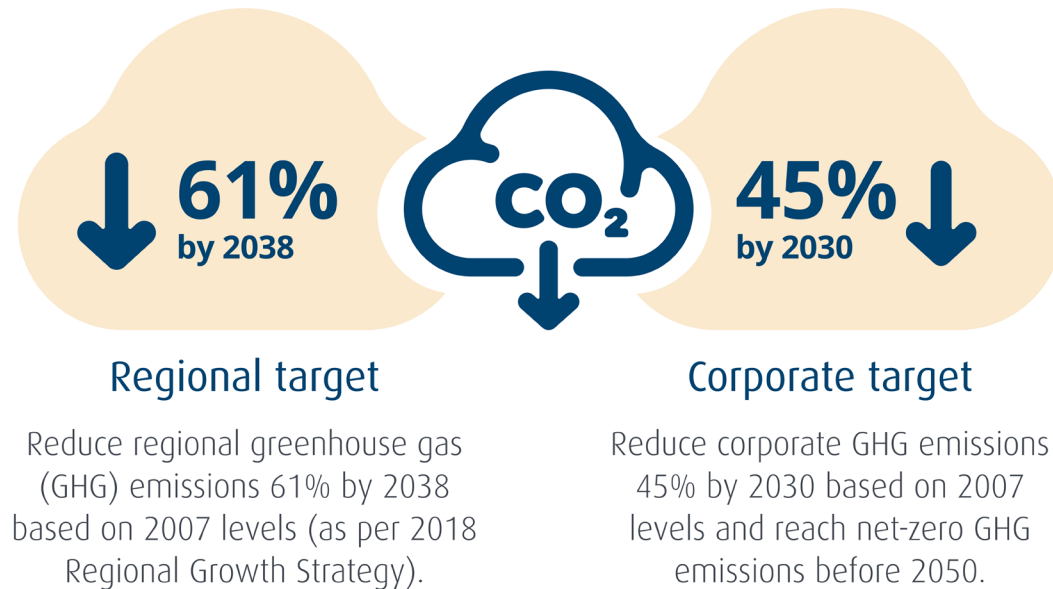
April 15, 2026

# Agenda

1. Climate Action Strategy
2. Current Status
3. Progress Summary
4. Report Card
5. Looking ahead



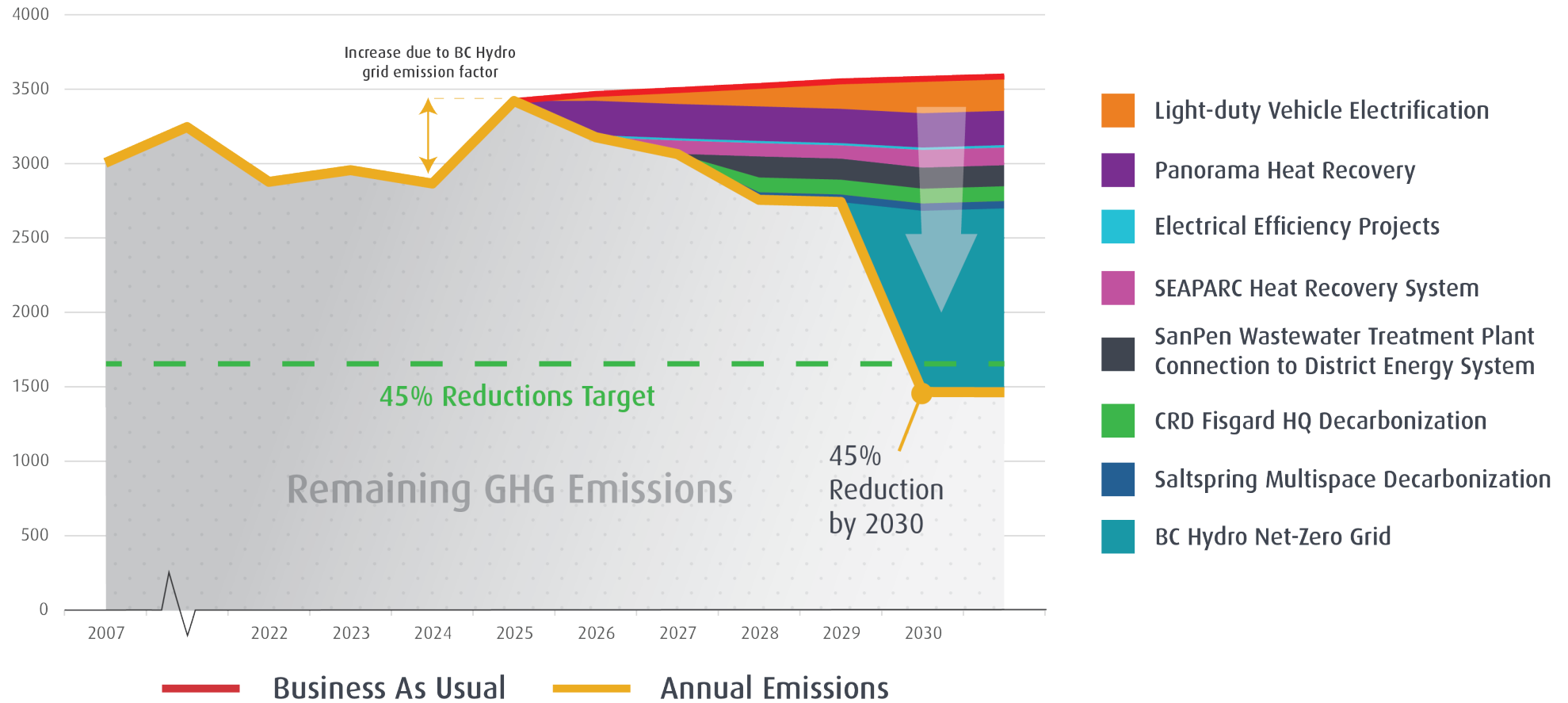
# Climate Action Strategy



- Climate-focused decision making
- Sustainable land use, planning and preparedness
- Low-carbon mobility
- Low-carbon and resilient buildings and infrastructure
- Resilient and abundant nature, ecosystems and food systems
- Minimized waste

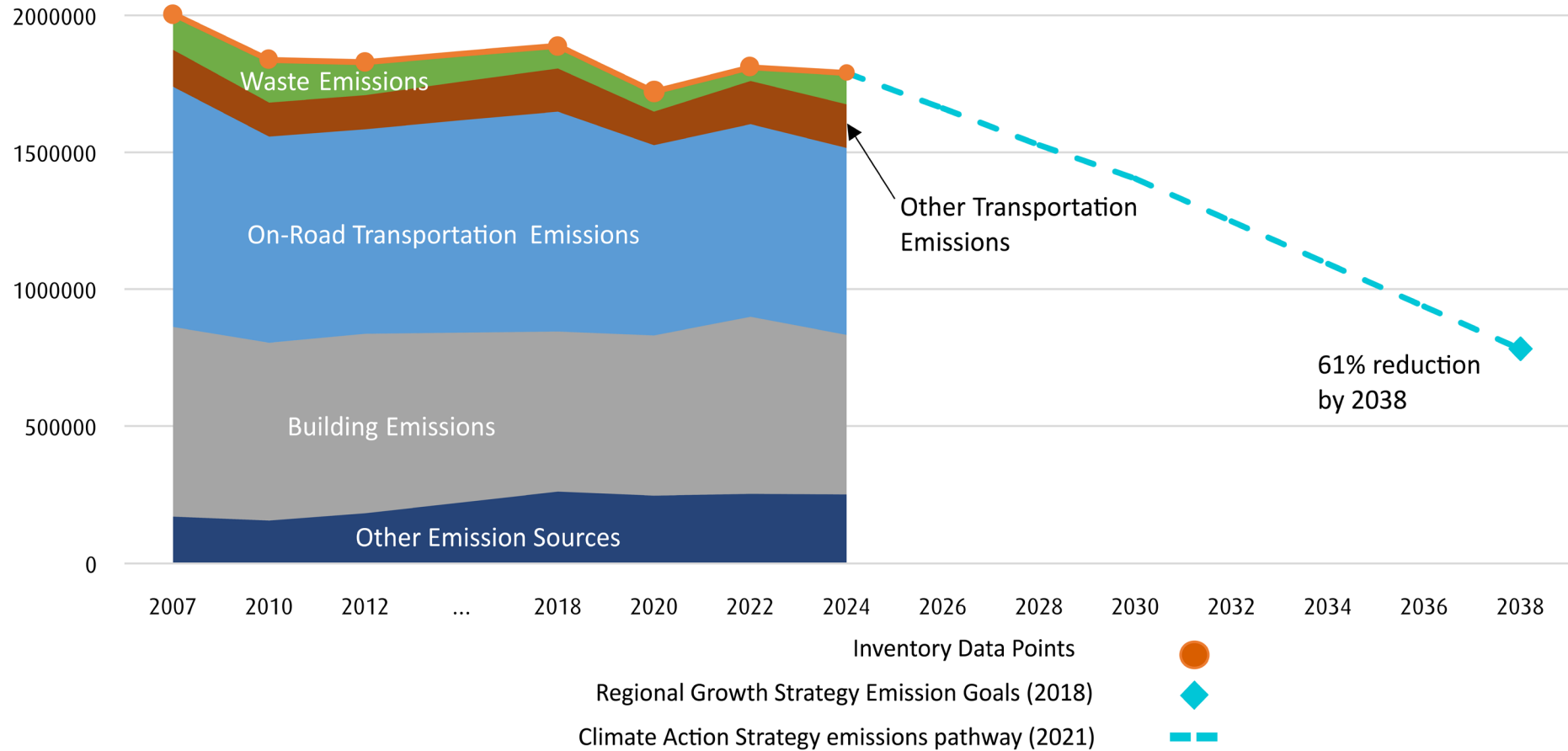
# Current Status

## Corporate Greenhouse Gas Emissions in 2025



# Current Status

## Capital Region Emissions (2007 to 2024) and 2038 Emissions Goal





# Climate-Focused Decision Making

Goal 1: Climate action priorities are integrated at all levels of decision making across the organization.



Overall Action Status  
On Track



## Progress Summary

- Piloted carbon price policy in key projects such as the Panorama Heat Recovery design.
- Improved quality of climate information in Initiative Business Cases
- Launched the regional Climate Adaptation Capacity Building Initiative.



# Sustainable Land Use, Planning and Preparedness

Goal 2: Support the region on its pathway to livable, affordable and low-carbon communities that are prepared for climate change.



Overall Action Status  
On Track



## Progress Summary

- Launched a public emergency dashboard for real-time weather and public safety updates.
- Began a multi-year project to review CRD's emergency response and critical infrastructure with a climate-based hazards and vulnerabilities lens.
- Hosted the CRD's first annual Climate Community Gathering with community-led action groups and municipal staff in the region resulting from research conducted in the 2025 Community Mobilization Report.



## Low Carbon Mobility

Goal 3: Rapidly reduce corporate fleet emissions. Support, endorse and encourage active, public and zero-emission transportation options across the region



Overall Action Status  
On Track



## Progress Summary

- Completed a 5-year Fleet Electrification and EV Infrastructure Roadmap to continue transitioning CRD fleet to electric.
- Installed 19 public EV chargers
- Established a Regional

Transportation Service to consolidate transportation planning and regional trail management across the region.



# Low-Carbon and Resilient Buildings and Infrastructure

Goal 4: Accelerate energy efficiency, emission reductions and enhanced resilience in CRD buildings and infrastructure. Support and encourage the same for all buildings and infrastructure across the region.



Overall Action Status  
On Track



## Progress Summary

- Collaborated with District of Saanich and City of Victoria to develop harmonized energy and carbon emissions reporting bylaws for large buildings.
- Continued implementation of regional programs such as the Home Energy Navigator program and Cool it! Climate Leadership workshops.
- Completed multiple energy studies, lighting efficiency projects, and equipment replacements at CRD owned facilities such as the Goldstream UV Treatment Plant, Panorama and SEAPARC recreation centres, and Parks Headquarters.



# Resilient and Abundant Nature, Ecosystems and Food Systems

Goal 5: Protect, conserve and manage ecosystem health and nature's capacity to store carbon and adapt to climate change. Support the ongoing ability of natural systems to sustain life.



Overall Action Status  
On Track



## Progress Summary

- Continued development of the Regional Parks Stewardship Plan and the Regional Parks Land Acquisition Strategy, embedding climate considerations as a key lens.
- Collaborated with W̱SÁNEĆ Leadership Council, Tsawout First Nation, Pauquachin First Nation, and T'Sou-ke First Nation on multiple initiatives related to parks planning and land restoration in regional parks.
- Completed inventory of ecosystems in the Greater Victoria Watershed Stewardship Area (GVWSA) to facilitate analysis of climate vulnerability.
- Established a new Biodiversity Service with the purpose of coordinating a regional approach to biodiversity, protection of ecological assets and environmental stewardship.



## Minimized Waste

Goal 6: Waste generation and the resulting emissions are minimized and remaining waste is transformed into a resource. Follow the 5R pollution prevention hierarchy.



Overall Action Status  
On Track



## Progress Summary

- Diverted 27,300 tonnes of clean and treated wood and asphalt shingles (18% of 2025 landfilled material).
- Opened a new kitchen scraps transfer station.
- Approved the Long-Term Biosolids Management Strategy, focusing on advanced thermal processing, additional combustion, and non-agricultural land application.
- Completed construction of Biogas Upgrading Facility for Renewable Natural Gas at Hartland Landfill.
- Supported 50 community-led waste reduction projects and 15 public events with the ReThink Waste Community and Zero-Waste Event Grant.



# Report Card



## 2025 Overall Action Plan Progress On Track

The climate action strategy identifies 127 actions with specific timelines across the organization. Scores are based on the current status of each action within their goal areas.



**Corporate Actions** Opportunity for Improvement



**Community-Focused Actions** On Track

## Goal Areas:



**Goal 1:** Climate-Focused Decision Making



**Goal 2:** Sustainable Land Use, Planning and Preparedness



**Goal 3:** Low-Carbon Mobility



**Goal 4:** Low-Carbon and Resilient Buildings and Infrastructure



**Goal 5:** Resilient and Abundant Nature, Ecosystems and Food Systems

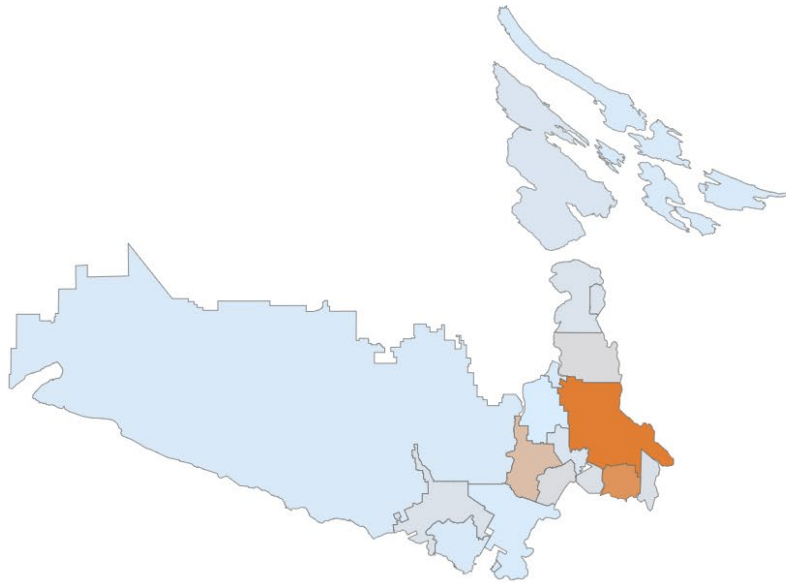


**Goal 6:** Minimized Waste

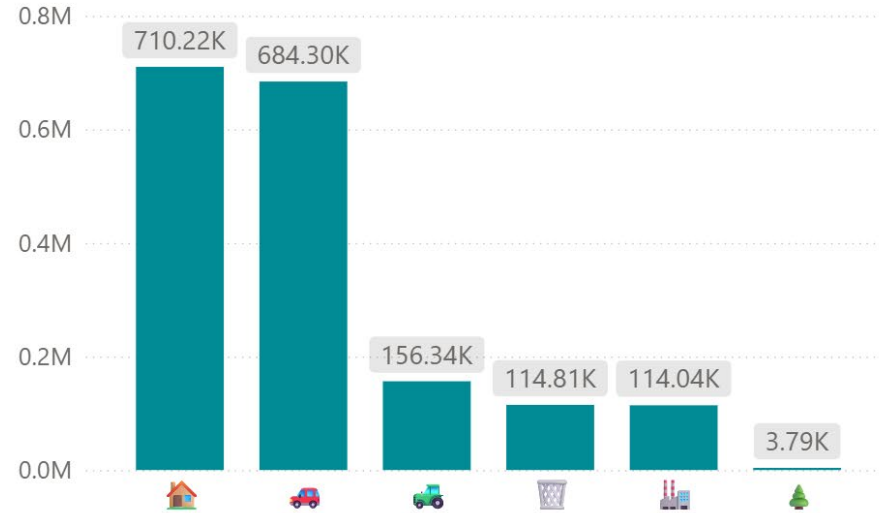


# Online Dashboard

Capital Regional District



Selected Area Emissions Breakdown By Sector



Legend

- Stationary Energy
- On-Road Transportation
- Off-Road Transportation
- Waste
- Industrial Process and Product Use (IPPU)
- Agriculture, Forestry & Other Land Use (AFOLU)

**CRD Greenhouse Gas Emissions Dashboard**

Select Area: Capital Regional District

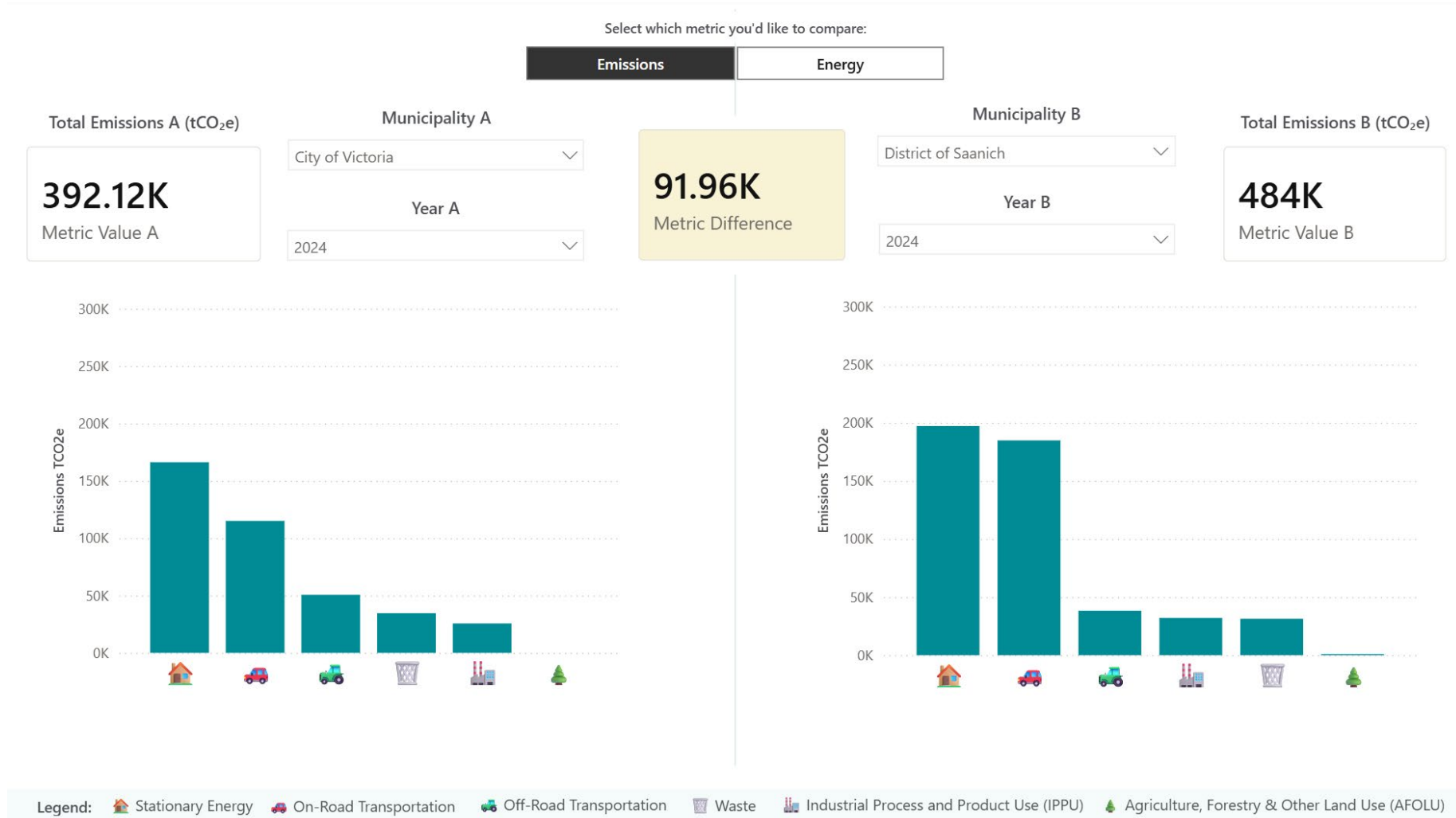
Select Year: 2007, 2022, **2024**

Selected Area GHG Emissions Total (tCO2e): **1.78M**

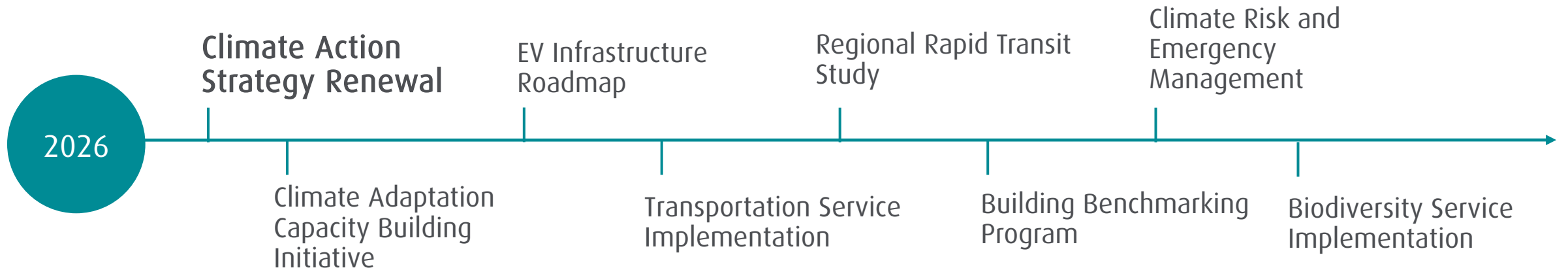
Selected Area Energy Use Total (GJ): **38.86M**



# Online Dashboard



# Looking Ahead – 2026 Initiatives





Thank you.

[rtooke@crd.bc.ca](mailto:rtooke@crd.bc.ca) | 250.360.3626



Capital Regional District



CRDVictoria



[crd.ca](http://crd.ca)



[@crd\\_bc](https://www.instagram.com/crd_bc)