

Capital Regional District

Meeting Minutes

Solid Waste Advisory Committee

Friday, January 9, 2026

CRD Boardroom
625 Fisgard Street
Victoria, BC V8W 2S6

PRESENT: B. Desjardins (Chair), M. Hauzer, M. Kurschner (EP), E. Latta (EP), T. Love, M. McCullough (EP), D. Monsour, J. Oakley (EP), R. Pirie, C. Remington, J. Shaw, A. Sibley (EP), P. Singh, J. Smith (EP), M. Smith, J. Stitt, D. Thran, H. Unger

STAFF: V. Landa (Recorder), R. Smith, A. Chambers, A. Gilmour Ford, D. Moghaddam, N. Roberts, N. Salter, M. Tromp Hoover

REGRETS: F. Baker, M. Coburn, S. Young Jr.

EP - Electronic Participation

The meeting was called to order at 12:30 pm.

1. Territorial Acknowledgement

2. Approval of Agenda

Agenda for the January 9, 2026 Solid Waste Advisory Committee meeting.

MOVED by D. Monsour, SECONDED by D. Thran

That the agenda be approved as circulated.

CARRIED

3. Adoption of Minutes

Minutes from the June 6, 2025, Solid Waste Advisory Committee meeting.

Minutes from the October 10, 2025, Solid Waste Advisory Committee meeting.

MOVED by M. Hauzer, SECONDED by C. Remington

That the meeting minutes be approved as circulated.

CARRIED

4. Chair's Remarks

- The Chair noted that 2026 is the final year of her CRD Board term with elections occurring this year.
- The Chair welcomed new members: T. Love, Owner/Operator of Private Waste Management Facility; P. Singh, Public representatives, at large; H. Unger, Public representatives, at large; J. Stitt, Willis Point representative; and M. Smith, Municipal Engineering Staff, City of Victoria.

5. Presentations/Delegations

There were none.

6. Committee Business

- a. Staff Reports (for information)

[Mattress Recycling – Provincial Policy Update](#) (November 12, 2025, CRD Board). M. Tromp Hoover provided a verbal update on the Mattress Recycling – Provincial Policy Update staff report, and it is attached as Appendix A.

- b. Rethink Waste Grant – 2025 Results (Presentation)

D. Moghaddam and N. Salter provided an overview of the Rethink Waste Grant Program including the Community Grant with project examples and the Zero-Waste Event Grant results. The presentation is attached as Appendix B.

- c. Material Diversion Transfer Station – Progress Update (Presentation)

N. Roberts provided a progress update on the Solid Waste Management Plan Waste Composition Study including diversion strategies and results along with next steps. The presentation is attached as Appendix C.

- d. Actual and Projected Monthly Refuse Tonnages at Hartland Landfill (standing item)

The tonnage graphs are posted via this link: <https://www.crd.bc.ca/about/data/hartland-landfill-tonnage>.

7. New Business

There was no new business.

8. Next Meeting

The next Solid Waste Advisory Committee meeting will be March 6, 2026.

9. Closing Comments

There were no closing comments.

10. Adjournment

The meeting was adjourned at 14:07.

MOVED by D. Monsour, SECONDED by M. Smith
That the Solid Waste Advisory Committee be adjourned.
CARRIED

**REPORT TO ENVIRONMENTAL SERVICES COMMITTEE
MEETING OF WEDNESDAY, OCTOBER 15, 2025**

SUBJECT **Mattress Recycling – Provincial Policy Update**

ISSUE SUMMARY

To provide an update on the recent exclusion of mattresses from a forthcoming amendment to the *BC Recycling Regulation*, including impacts for the Capital Regional District's (CRD) solid waste service.

BACKGROUND

In BC, Extended Producer Responsibility (EPR) is an environmental policy that holds producers accountable for the full lifecycle of their products, including the costs and logistics for end-of-life collection and recycling. In 2021, the BC Ministry of Environment & Parks released an action paper titled "Advancing Recycling in BC: Extended Producer Responsibility Five-Year Action Plan". This report called for the launch of several new EPR programs, including one for mattresses and foundations that was set to launch in 2025.

Local and regional governments across BC have long advocated for and supported the Ministry's plan to implement EPR for mattresses, including resolutions from the Union of BC Municipalities in both 2014 and 2020 that called for the inclusion of mattresses in any future update to EPR programs. Despite significant support from these stakeholders, the Ministry recently reversed its position in July 2025, informing regional districts, through the BC Product Stewardship Council, that mattresses had been removed from a forthcoming update to the *BC Recycling Regulation*.

The rationale for this policy reversal is a concern that EPR fees would appear to increase costs for consumers during a period of inflationary pressure. The Province's economic analysis determined that, to reflect the true cost of end-of-life management for mattresses, potential EPR fees could be as high as \$40-45 per unit. These would be charged at the time of purchase rather than disposal as they are now, potentially appearing as a cost increase to consumers due to this shift in timing. However, the Province also acknowledged that local and regional governments are currently subsidizing the disposal costs for these products to avoid illegal dumping—recognizing that the actual cost of recycling is already being covered by local governments and as a result, taxpayers, instead of the producers and consumers of these products.

DISCUSSION

Hartland Landfill currently accepts mattresses and their foundations as general refuse, charging \$155/tonne in 2025 plus a \$10 bin fee. Hartland also offers a voluntary mattress recycling program as part of its public drop-off area for the same cost as disposal. Through this voluntary program, the CRD shipped 280 tonnes of mattresses with metal springs for local processing in 2024 at a net cost of approximately \$162,000. These figures do not include processing and landfilling costs for the high volume of mattresses and foundations accepted at Hartland Landfill that were not suitable for recycling.

Staff at several regional districts across BC are seeking direction from their Boards to send letters to the Minister of Environment & Parks to express their objections to the exclusion of mattresses from the Province's forthcoming EPR program expansion. This advocacy aligns with the CRD's Solid Waste Management Plan Strategy #10, Action A to "Advocate to the Province to expand EPR programs".

Current Challenges in Mattress Disposal and Recycling

- Mattresses and their foundations are very expensive and difficult to landfill as they do not easily compress or compact, so they take up significant airspace.
- If not dismantled and shredded, the metal springs and wires in mattresses can cause significant damage to the wheels and tracks of heavy equipment, which in turn increases maintenance costs and decreases operational capacity due to machinery downtimes.
- Coordinating recycling options for mattresses and foundations is also challenging for individual landfills as they are bulky, heavy and difficult to store and transport.
- The recycling value of mattress components (e.g., metal, felt, foam, wood) is determined by the quality of the units, yet keeping these materials dry and clean to preserve their value requires significant covered storage that is cost prohibitive to maintain.
- Mattresses and their foundations can also be contaminated with biohazards, posing a risk for staff who are moving these materials on site.
- While some local deconstruction is possible for certain types of mattresses, foam mattresses have become a larger share of this product category and do not contain high-value materials, nor can they be deconstructed effectively.

Mattresses are frequently dumped illegally in public spaces, with clean-up and enforcement costs covered primarily by municipalities. Although the CRD has local mattress hauling and processing contracts in place, most mattresses brought to Hartland Landfill are currently processed for recycling or shredded on site to reduce costs, airspace consumption and the risk of equipment damage.

Benefits of an EPR Program for Mattresses

- An EPR program for mattresses will transfer the financial and logistical burdens of end-of-life collection and management from local and regional governments to the producers and consumers of these products through a user-pay model charged at the time the mattress is purchased.
- The economies of scale and logistics coordination benefits of a province-wide EPR program will reduce market vulnerability for mattress recycling businesses.
- Mattresses and their foundations could be disposed of for free at Hartland Landfill and other recycling depots, reducing the incentive for illegal dumping throughout the region.

If an EPR program for mattresses is implemented by the Province, the CRD would expect to receive a fee for collecting, storing and handling these materials from a stewardship organization much like other EPR programs in BC. Only mattresses deemed unsuitable for recycling would be shredded and landfilled, saving significant airspace and therefore extending the lifespan of Hartland Landfill.

ALTERNATIVES

Alternative 1

The Environmental Services Committee recommends to the Capital Regional District Board: That the Board Chair is authorized to send an advocacy letter to the Ministry of Environment & Parks expressing the Capital Regional District's objection to the recent exclusion of mattresses from its forthcoming update to the Province's *Recycling Regulation*.

Alternative 2

The Environmental Services Committee recommends to the Capital Regional District Board: That this report be referred back to staff for additional information.

IMPLICATIONS

Alignment with Existing Plans & Strategies

Advocating for the inclusion of mattresses in a future update to the Province's *Recycling Regulation* aligns with Strategy #10 in the CRD's Solid Waste Management Plan to "Support Existing and New Extended Producer Responsibility Programs".

Environmental Implications

Hartland Landfill currently receives a significant volume of mattresses and their foundations for disposal each year, both directly from residents and from municipalities that are retrieving illegally dumped materials. Although these products are currently being processed for recycling or shredded on site, continued disposal of these materials reduces the lifespan of Hartland Landfill.

Financial Implications

The CRD is currently subsidizing the cost of recycling for mattresses by approximately \$162,000 annually. This figure does not include processing and landfilling costs for the high volume of mattresses that are not suitable for recycling. A province-wide EPR program will remove this cost from Environmental Resource Management's operational budget and allow for the development of the local mattress recycling industry with no budget impact. Free disposal of mattresses and their foundations at Hartland Landfill under an EPR program would also reduce the incentive to dump these products illegally across the region, reducing cleanup and enforcement costs currently covered by municipalities.

CONCLUSION

The Capital Regional District (CRD) is currently subsidizing the cost of end-of-life collection, management and recycling for mattresses. An Extended Producer Responsibility (EPR) program for these products, as previously endorsed by the Province, will shift the financial and logistical burden of mattress disposal from the CRD to producers much like dozens of other products already under EPR stewardship. A new EPR program will also reduce illegal dumping, extend the life of Hartland Landfill and support the development of a circular economy by leveraging the economies of scale for mattress recycling. Staff recommend that the CRD Board respond to the Province's recent policy decision with an advocacy letter that reinforces CRD support for an EPR program that will reflect the true cost of managing mattresses.

RECOMMENDATION

The Environmental Services Committee recommends to the Capital Regional District Board:
That the Board Chair is authorized to send an advocacy letter to the Ministry of Environment & Parks expressing the Capital Regional District's objection to the recent exclusion of mattresses from its forthcoming update to the Province's *Recycling Regulation*.

Submitted by:	Melanie Tromp Hoover, BA, Acting Senior Manager, Environmental Resource Management
Concurrence:	Luisa Jones, MBA, General Manager, Parks, Recreation & Environmental Services
Concurrence:	Ted Robbins, B. Sc., C. Tech., Chief Administrative Officer

Rethink Waste Grant 2025 Overview

Environmental Resource Management

Solid Waste Advisory Committee
January 09, 2026

Agenda

- Overview of Rethink Waste Grant Program
- Community Grant & Project Examples
- Zero-Waste Event Grant & Event Examples



Overview - Rethink Waste Grant Program



SWMP Goals:

Goal #3: To have informed citizens that participate effectively in proper waste management practices

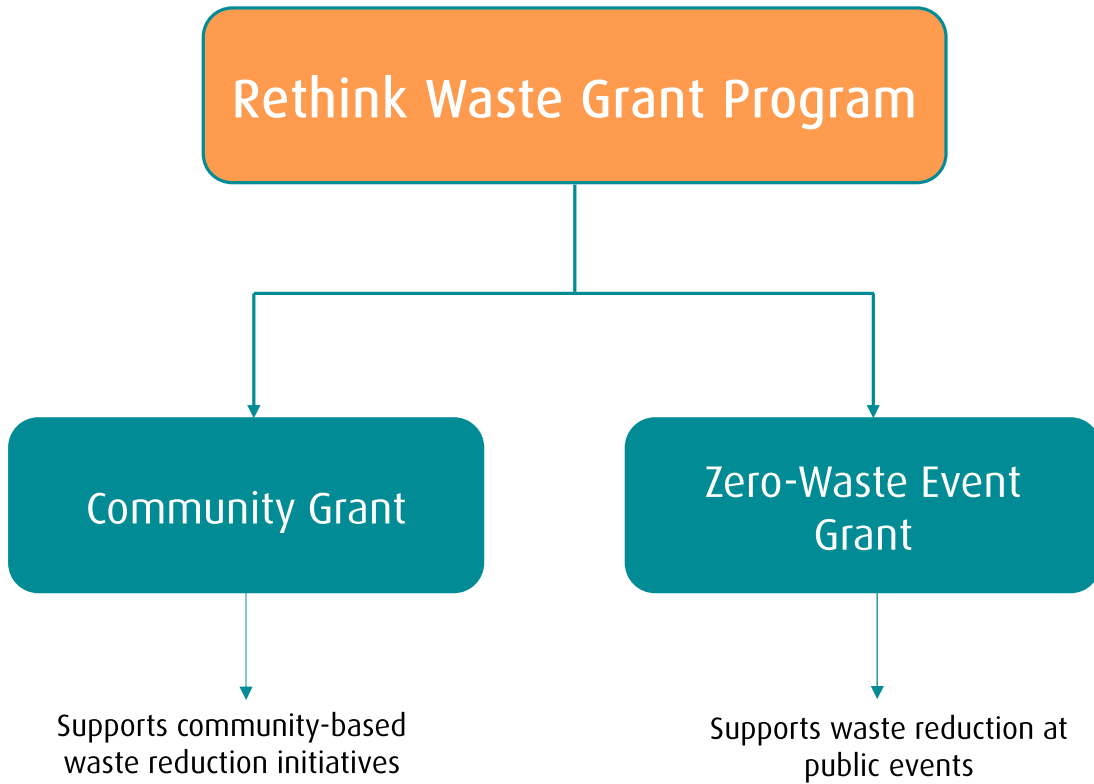
SWMP Strategy#2B:

- Establish a Community-based waste reduction grant program

Objective:

- To fund community projects that advance the 5R-Pollution Prevention hierarchy by diverting materials from landfill.

Overview



Community Grant (2022-2025)



Year	Number of Applications Received	Funding Approved
2022	19	\$48,137
2023	31	\$79,590
2024	31	\$66,973
2025	50	\$174,091



Lifecycles Project Society

Project: Full Circle Fruit Project

- Improving food security in Greater Victoria for 30 years
- Converts B-Grade fruit into juices, jams and jellies

Achievements:

- Diverted ~7200 lbs of B-Grade fruit from the landfill
- Conducted 3 workshops comprising 44 participants
- Sold 70 jars of jam in 2025

Grant Funds: \$3,166



District of Saanich

Project: Reusable Bowls for the Saanich Strawberry Festival

- To reduce the use of single-use paper or compostable bowls
- Provided reusable dishware for the Strawberry Festival

Achievements:

- Achieved a 95% return rate: 3,528 bowls used; 3,360 bowls returned
- Prevented 3,528 single-use items from entering the landfill
- Promoted Community engagement
- Fostered Community partnerships

Grant Funds: \$5,000



Transition Salt Spring Society

Projects: Community Clothing Swap & a Community Toy Swap

- To help normalize the reuse and redistribution of unwanted items as an alternative to landfill disposal.

Achievements:

Community Clothing Swap	Community Toy Swap
<ul style="list-style-type: none">• 725 Shoppers• 26 volunteers• 2,400 lbs of clothing went to new homes	<ul style="list-style-type: none">• 294 shoppers• 29 Volunteers• 1,215 lbs of toys went to new homes

Grant Funds: \$3,000



View Royal Elementary School

Project: Cardboard Creativity and Waste Reduction Toolbox

- Reduce waste by diverting clean cardboard from recycling and using it for multi-stage student projects
- Teach students about the waste hierarchy and principles of circular design using ADST concept.

Achievements:

- Cardboard is now reused 2-4 times
- Measurable decrease in cardboard volume
- 275 Students participated
- Community engagement

Grant Funds: \$3,345



Zero-Waste Event Grant

Grant Overview

- \$10,000 for organizers of public events
- To reduce the amount of event waste going to landfill

Grant Objectives:

- Increase waste diversion
- Gather data on waste streams and volumes
- Encourage reusable containers



Zero-Waste Event Grant Results



15 successful grant applications



Total of \$72,051 granted



6013 kg of waste produced overall



89% waste diverted overall
(i.e. 5362 kg)

ArtisTree

Event Info:

- Local art showcase, live music, food vendors at Government House
- ~20,000 attendees

Achievements:

- Hired a waste manager and bought waste collection infrastructure
- 77% waste diverted from landfill
- Intention to incorporate reusables for 2026

Grant Funds: \$3,888



Canadian Ultimate Championship – Grand Masters Series



Event Info:

- National Ultimate Frisbee Tournament
- 4 locations: Topaz Park, Royal Athletic Park, Saint Michael's University, Central Park
- ~920 attendees

Achievements:

- Hired waste manager to educate and sort
- 97% waste diverted from landfill
- Model shared with Ultimate Canada

Grant Funds: \$5,250

Crabfest

Event Info:

- Served +1600 crab boil buckets at Ships Point
- ~12,000 attendees

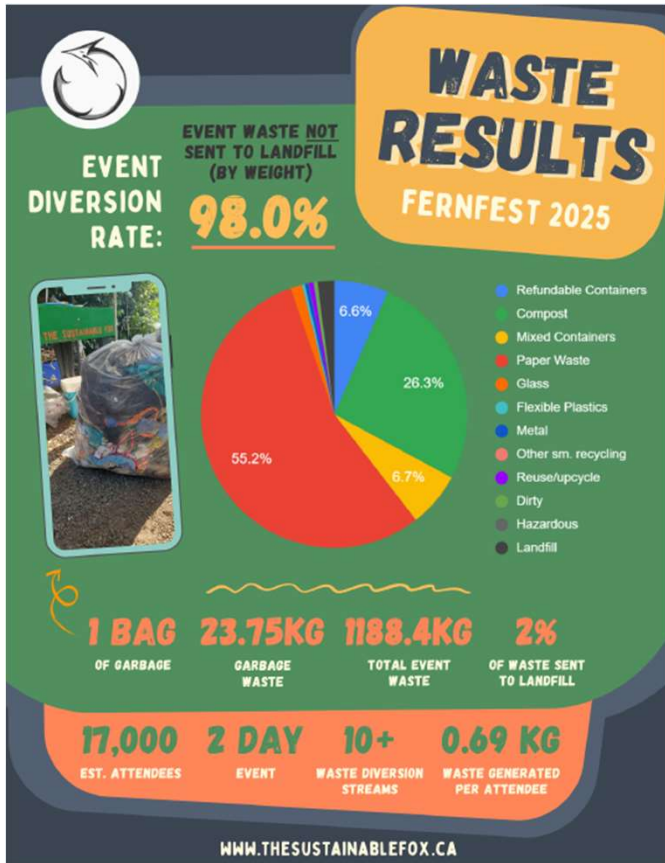
Achievements:

- Hired a waste manager and purchased waste system infrastructure
- 68% waste diverted from landfill
- Planning to implement reusable containers for 2026

Grant Funds: \$8,737



Reporting and Data Collection

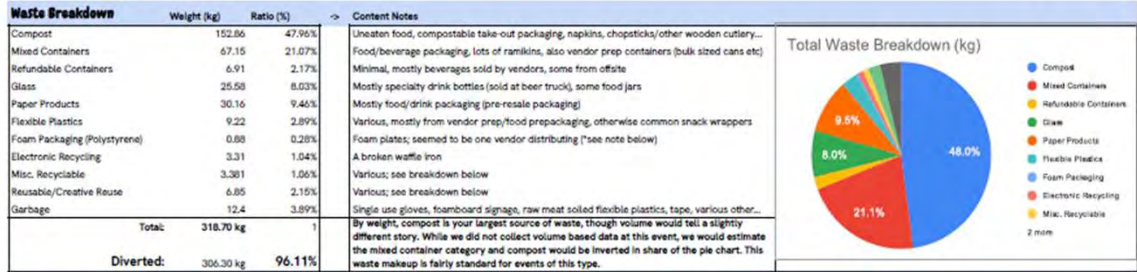


Soul of Vietnam (2025)

Event date: September 20, 2025

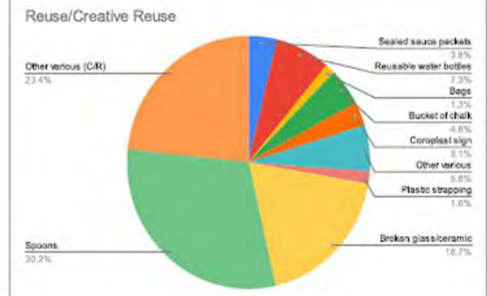
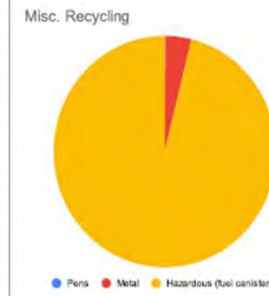
Venue(s): Ship Point (Victoria Inner Harbour)

Scale: est. 4000-5000



Misc. Recycling	Weight (kgs)	Ratio (%)
Pens	0.001	0.03%
Metal	0.13	3.85%
Hazardous (fuel canisters)	3.25	96.13%
Total:	3.381	(of 1.06%)

Reuse/Creative Reuse	Weight (kgs)	Ratio (%)
Reuse:		
Sauce in clean, sealed packets	0.26	3.80%
Reusable water bottles	0.5	7.30%
Bags	0.09	1.31%
Bucket of chalk	0.33	4.82%
Coroplast sign	0.21	3.07%
Other various	0.4	5.84%
Creative Reuse:		
Plastic strapping	0.11	1.61%
Broken glass/ceramic	1.28	18.69%
Sturdy single-use spoons	2.07	30.22%
Other various	1.6	23.36%
Total:	6.85	(of 2.15%)



Notes

General: General observations.

Huge congratulations to everyone involved in making this event happen! What an amazing turn out for an inaugural event, and you served entertainment and delish food all day long. Really well done coordinating all those logistics on a first go!

It was a legitimately really fun place to be all day -- our team worked hard and had a great time from start to end! We're proud to have contributed our piece to this event puzzle and we're so grateful to have been included. Thank you for planning your event with waste reduction in mind and we can't wait to see how we'll continue to improve at this together in years to come!

The Sustainable Fox learned a lot at this event which, when it's as fun as it was, we consider a huge privilege and a blessing. As a young business doing things in a completely different way from the norm, we're often We learned a lot tackling new challenges for the first time and we are so grateful for joyful collaborators.



Thank you

rethinkwaste@crd.bc.ca



@crdvictoria



Capital Regional District



CRDVictoria



crd.bc.ca

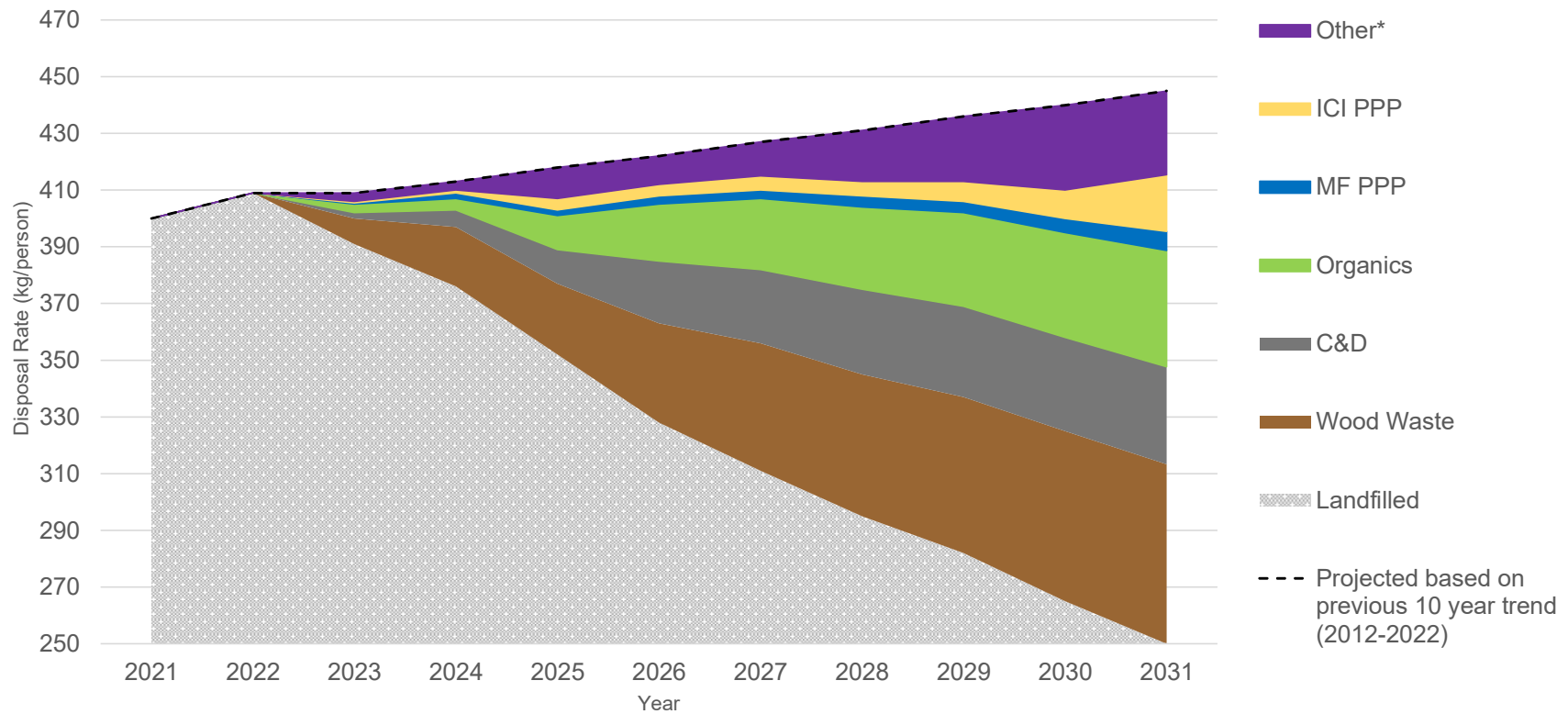
Hartland Landfill Material Diversion Transfer Station



Solid Waste Management Plan Waste Composition Study (2022)



Solid Waste Management Plan Pathway to 250kg/person



Diversion Strategies

Tipping fees (2026)

	Tipping Fee (per tonne)
MANDATORY RECYCLABLES	
Clean Wood	\$80
Treated Wood	\$110
Asphalt Shingles	\$110
WASTE	
General refuse/Clean renovation and demolition waste	\$160

Diversion Strategies

Requirement to separate



Fines	
Fail to separate waste	\$500
Fail to separate waste (floor trailer)	\$1,000

Diversion Strategies Transfer Station



Accepted

- Asphalt shingles
- Wood
- Rigid plastics
- Mattresses
- Yard and garden waste
- Specific invasives

Diversion Strategies Transfer Station



Asphalt shingles

- Single/multiple layers
- Torch on roofing
- Roll on roofing

Diversion Strategies Transfer Station



Wood

Clean wood

- Pallets
- Crating
- Off-cuts

Treated wood

- Painted
- Stained

Diversion Strategies Transfer Station



Rigid plastic

- Various resins types are accepted
- No metal, chemicals, or residual fuel

Diversion Strategies Transfer Station



Mattresses

- Wood: ground and shipped to end users
- Metal springs: recycled
- Textiles: sent to the active face

Diversion Strategies Transfer Station



Yard/garden waste

- Ground and hauled to a local farm

Diversion Strategies Transfer Station



Invasives

- blackberry
- ivy
- Scotch broom

Results Diversion

Material	Annual target (t)	Diversion in first year of operation
Asphalt shingles	9,000	7,600
Clean wood	5,500	1,700
Treated wood	22,000	17,000
Rigid plastics	3,000*	190**
Mattresses	280 (2024 tonnage)	280
Yard and garden waste	2,250 (2024 tonnage)	2,250
Invasives	N/A	84

*Based on Solid Waste Composition Study

**Forecast based on initial trial

Next Steps

- Issue RFP for new operations contract
- Look for other diversion options e.g., carpet and underlay
- Move materials up the hierarchy e.g., salvageable lumber
- Reduce GHG emissions e.g., haul/process materials closer to MDTs



Any questions?



Contact information:
Niki Roberts
E: nroberts@crd.bc.ca
T: 250.360.3219