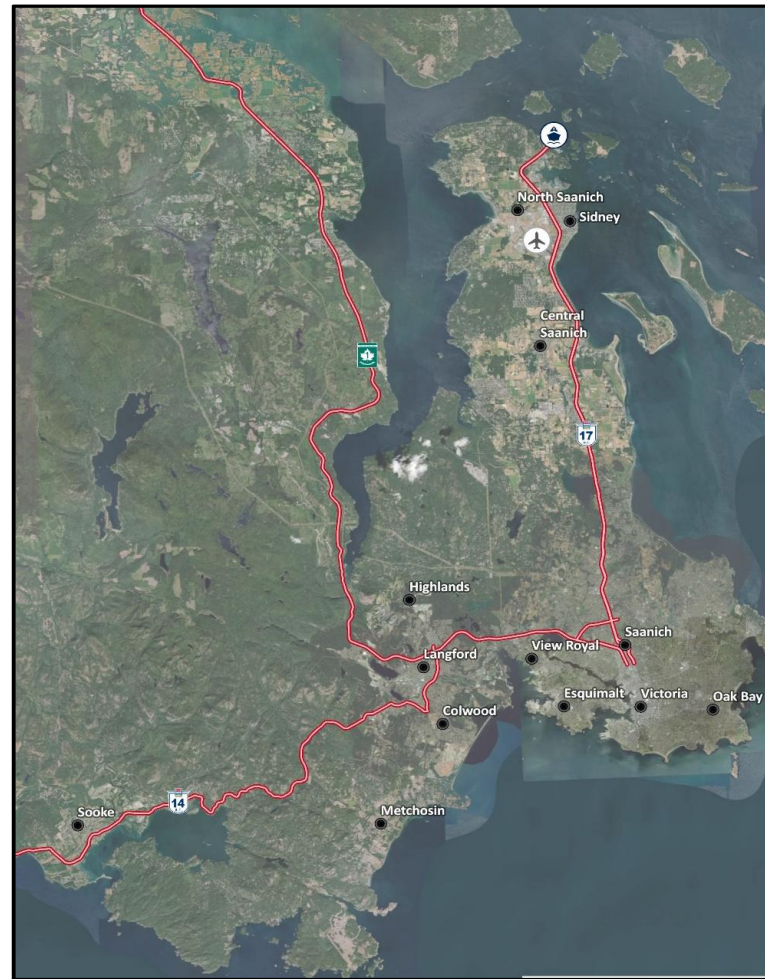


South Vancouver Island Multi-modal Transportation Plan

*Capital Regional
District*

*Transportation
Committee Meeting*

April 24, 2019





Discussion Outline

1. Introductions
2. Purpose and Study Area
3. Context
4. Our Team
5. Preliminary Process
6. Working with CRD Municipalities

Purpose

1. Introductions

2. Purpose and Study Area

3. Context

4. Our Team

5. Preliminary Process

6. Working with CRD
Municipalities

ü Review current conditions
and future pressures

ü Outline core issues and
challenges

ü Examine historical and new
multi-modal opportunities

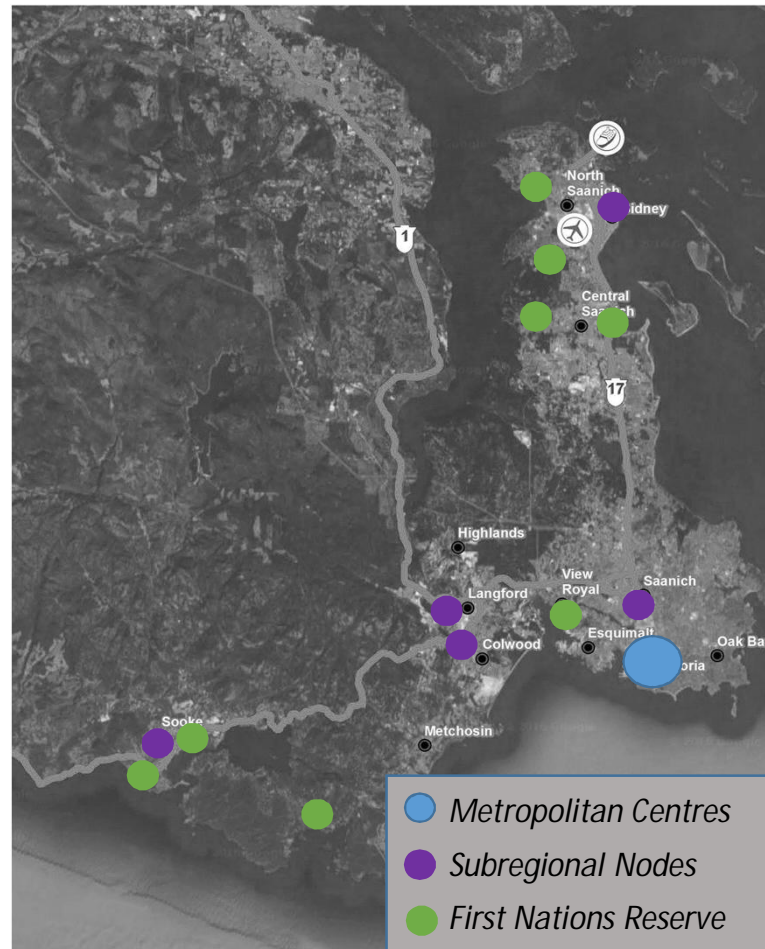
ü Develop a plan with priority
actions

- Safety
- Mobility
- Reliability
- Asset Condition

- Infrastructure
- Services
- Programs
- Policies

Study Area

1. Introductions
2. Purpose and Study Area
3. Context
4. Our Team
5. Preliminary Process
6. Working with CRD Municipalities



- Considering inter-regional travel patterns.
 - *Regional Gateways*
 - *Regional Nodes*
 - *First Nations Communities*
- Supporting movement of people, goods and services.

Re-considering 'Historic' Possibilities

1. Introductions
2. Purpose and Study Area
3. Context
4. Our Team
5. Preliminary Process
6. Working with CRD Municipalities

Crossings

- North Peninsula
- South Peninsula

Hwy 1 (Malahat)

- Improvements
- Re-alignments

E&N

- Commuter Rail
- Express Bus

Ferry

- Mill Bay – Brentwood
- Westshore

Hwy 14

- Widening & realignment
- Express bus & transit priority

Hwy 1

- Operational Improvements
- Rapid transit & expanding priority treatments

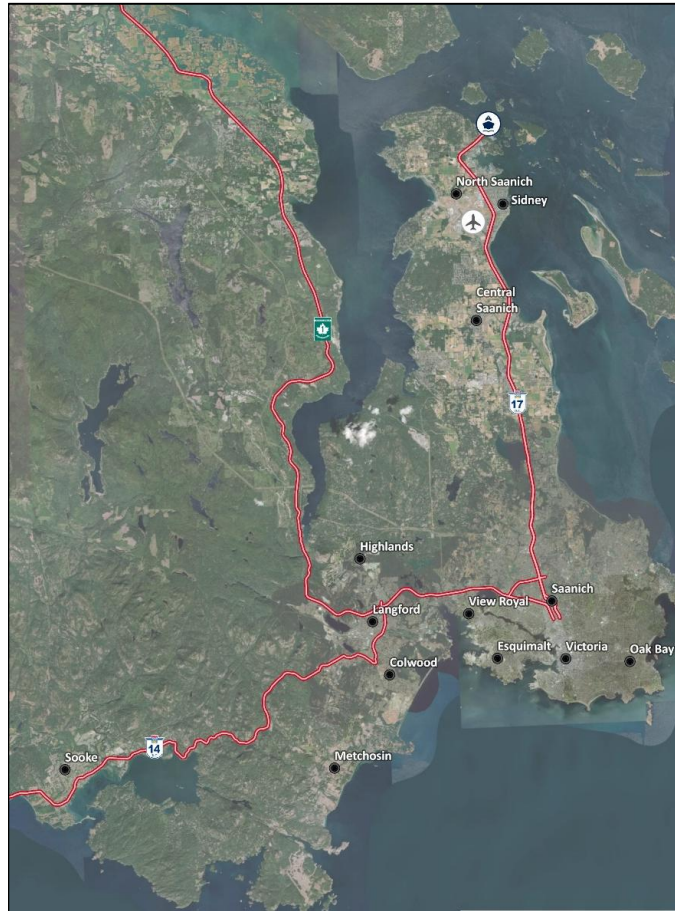
Hwy 17

- Grade-separated interchange, access management
- Rapid transit & priority treatments



Re-considering All Possibilities

1. Introductions
2. Purpose and Study Area
3. Context
4. Our Team
5. Preliminary Process
6. Working with CRD Municipalities



Active Transportation

- Connections to inter-regional services
- Inter-regional cycling facilities (CRD & CVRD)

Transportation Demand Management & New Mobility

- Supporting sustainable inter-regional travel choices.
- Examples CRD Plan
 - Ø Marketing & branding for local agencies;
 - Ø Workplace & institutional programs;
 - Ø Regional mobility passes;
 - Ø Carsharing;
 - Ø Multi-modal journey planner.

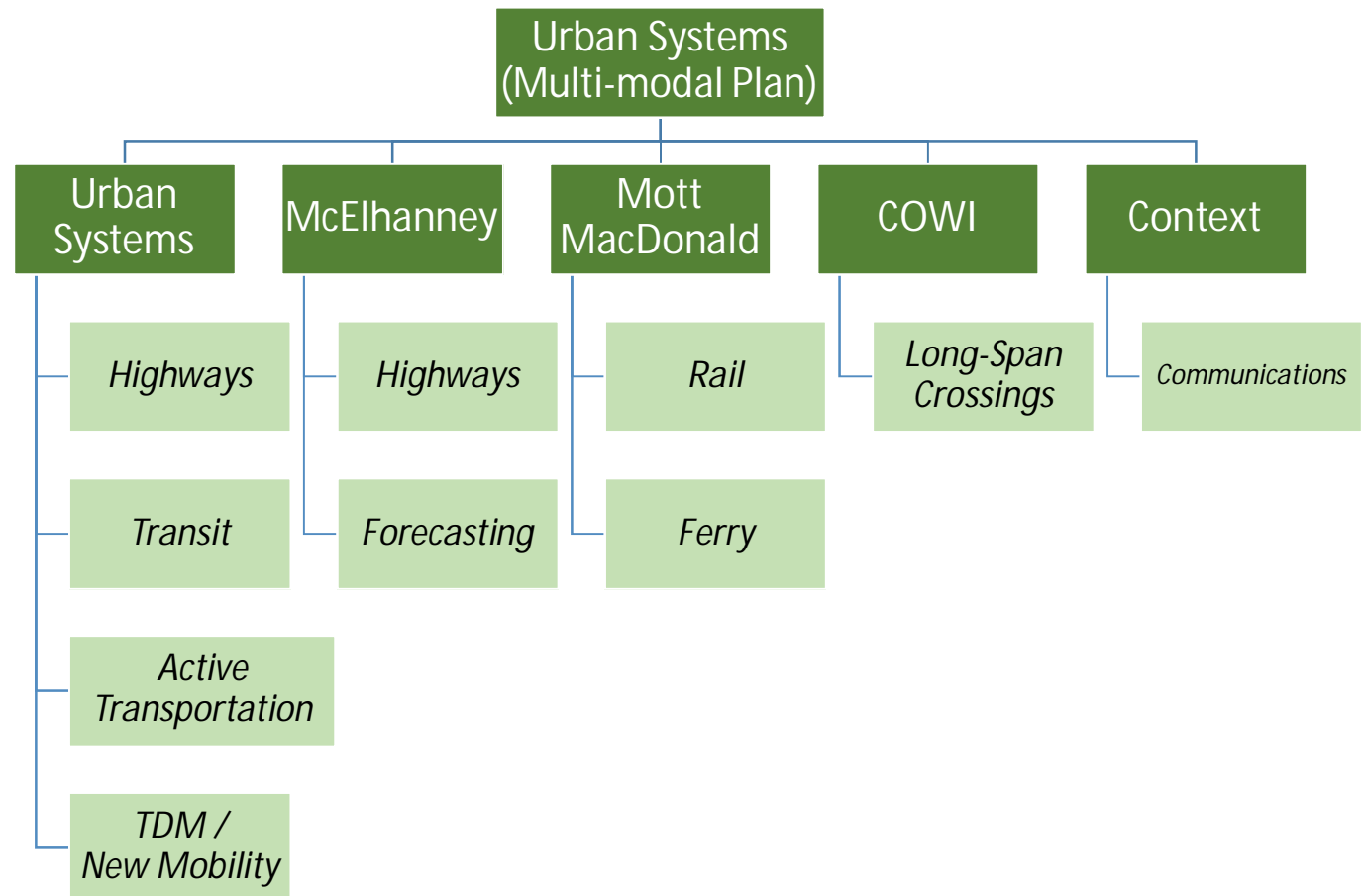
Supporting Your Plans & Policies

1. Introductions
2. Purpose and Study Area
3. Context
4. Our Team
5. Preliminary Process
6. Working with CRD Municipalities



Consulting Team

1. Introductions
2. Purpose and Study Area
3. Context
4. Our Team
5. Preliminary Process
6. Working with CRD Municipalities



5-Phase Process

1. Introductions
2. Purpose and Study Area
3. Context
4. Our Team
5. Preliminary Process
6. Working with CRD Municipalities

PHASE 1

Transportation Snapshot

PHASE 2

Long-term Opportunities
Identification & Screening

PHASE 3

Medium-term Priority Options
Development & Evaluation

PHASE 4

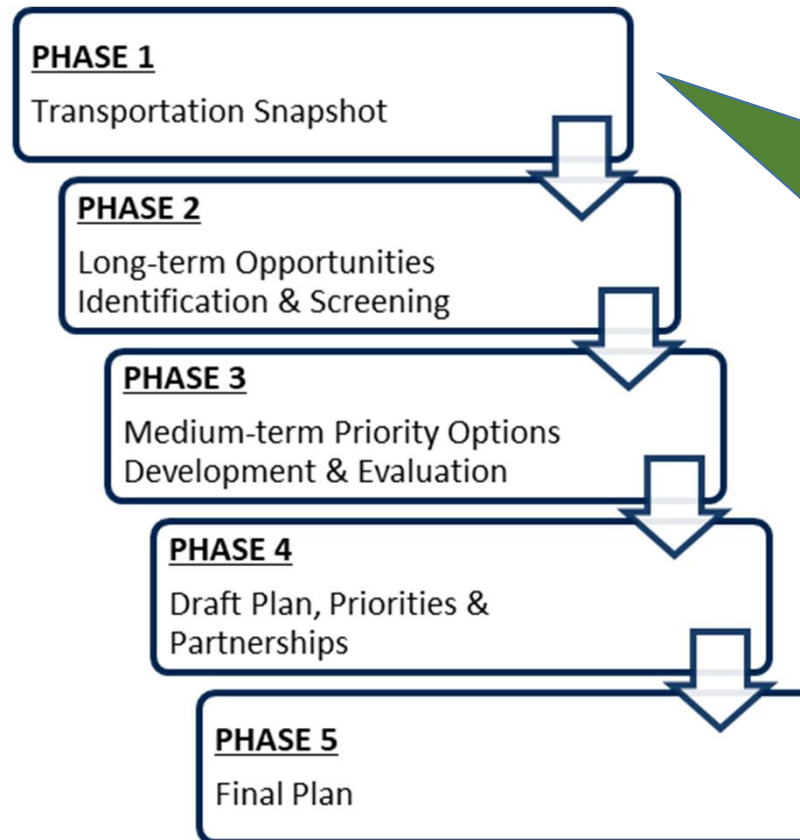
Draft Plan, Priorities &
Partnerships

PHASE 5

Final Plan

5-Phase Process

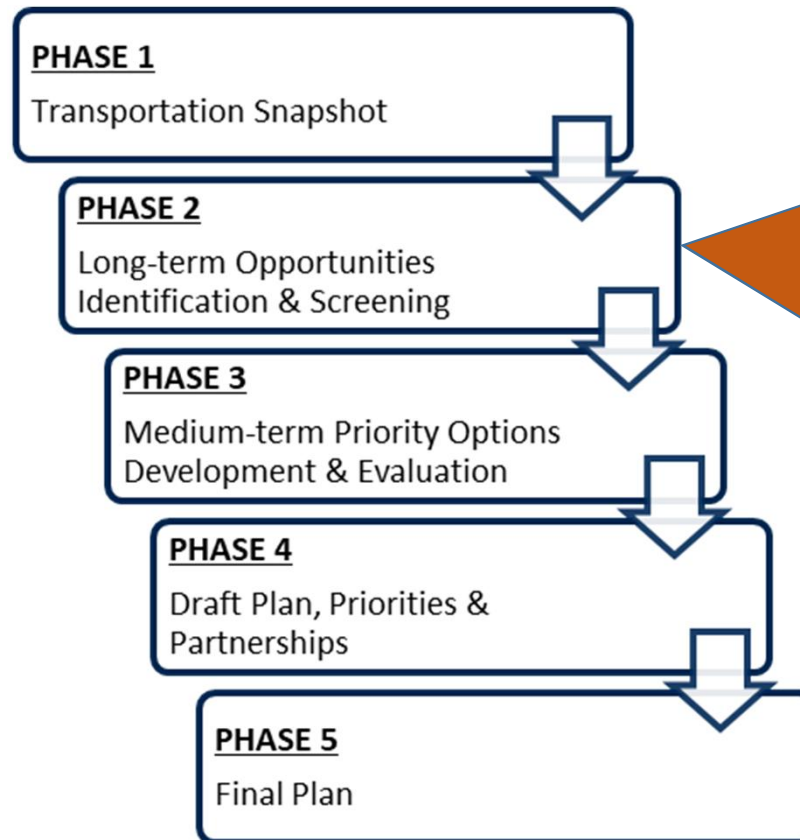
1. Introductions
2. Purpose and Study Area
3. Context
4. Our Team
5. Preliminary Process
6. Working with CRD Municipalities



- Community Profiles.
- Transportation Systems.
- Current & Forecast Travel.
- Conditions Assessment.
- Key Issues and Challenges.

5-Phase Process

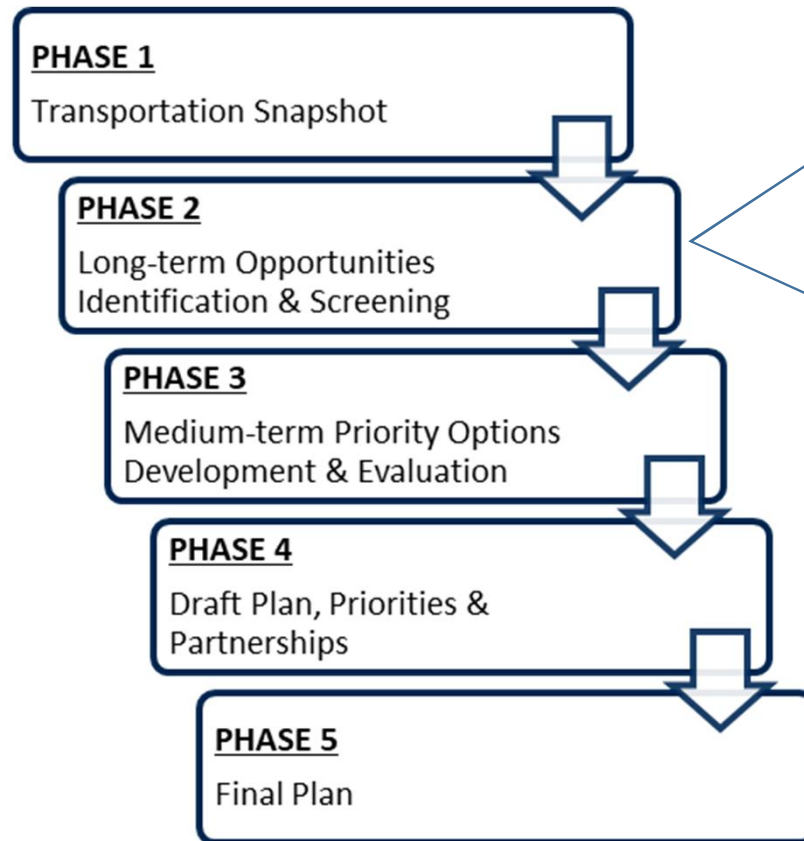
1. Introductions
2. Purpose and Study Area
3. Context
4. Our Team
5. Preliminary Process
6. Working with CRD Municipalities



- Forecasting travel.
- Highway Options (multi-modal).
- Bridge Crossings.
- Passenger Ferry.
- Commuter Rail Options.
- Bus Transit Option.
- Active Transportation.
- TDM & New Mobility.
- Assessment and Screening.

5-Phase Process

1. Introductions
2. Purpose and Study Area
3. Context
4. Our Team
5. Preliminary Process
6. Working with CRD Municipalities



Screening Outcomes

- a. What looks promising for medium-term action?
 - Part of long-term.
 - Good business case potential.
 - Leverage other priorities.
- b. What will remain part of a long-term plan considerations?
- c. What should be taken off the table for the long-term (show-stoppers)?

5-Phase Process

1. Introductions
2. Purpose and Study Area
3. Context
4. Our Team
5. Preliminary Process
6. Working with CRD Municipalities

PHASE 1

Transportation Snapshot

PHASE 2

Long-term Opportunities
Identification & Screening

PHASE 3

Medium-term Priority Options
Development & Evaluation

PHASE 4

Draft Plan, Priorities &
Partnerships

PHASE 5

Final Plan

- Options Refinement.
- Options Evaluation.
- Risk Review.
- Economic Evaluation.
- Partnerships, priorities & steps for Implementation.

Related Provincial Initiatives

1. Introductions
2. Purpose and Study Area
3. Context
4. Our Team
5. Preliminary Process
6. Working with CRD Municipalities

Highway 1 – Malahat Segment Detour Route Planning

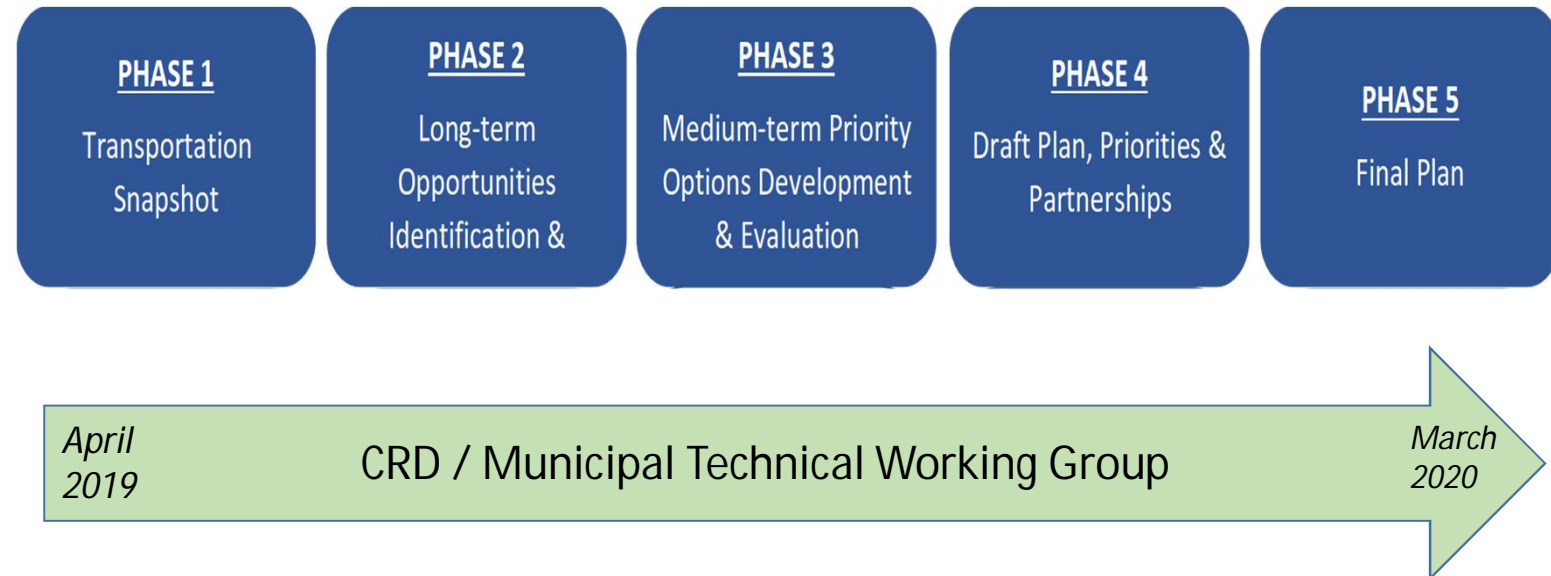
Identify and evaluate potential detour routes for the section of Highway 1 between Westshore Parkway and Shawnigan Lake Road.

E&N Corridor Condition Assessment

Prepare a Baseline Conditions Report on the condition of the physical plant and right-of-way (including track, bridges, yards, stations, offices and workshops, grade crossings, rolling stock as well as potential of heavier loading for commuter rail requirements).

Working with CRD Municipalities

1. Introductions
2. Purpose and Study Area
3. Context
4. Our Team
5. Preliminary Process
6. Working with CRD Municipalities



Engagement and Communications

1. Introductions

§ Leverage engagement from previous studies.

2. Purpose and Study Area

§ Engagement Plan to include:

3. Context

q *Working with First Nations;*

4. Our Team

q *Consultation with transportation agencies & local government; and*

5. Preliminary Process

q *Input from key stakeholder groups.*

6. Working with CRD
Municipalities

Questions and Suggestions?

1. Introductions
2. Purpose and Study Area
3. Context
4. Our Team
5. Preliminary Process
6. Working with CRD Municipalities

